

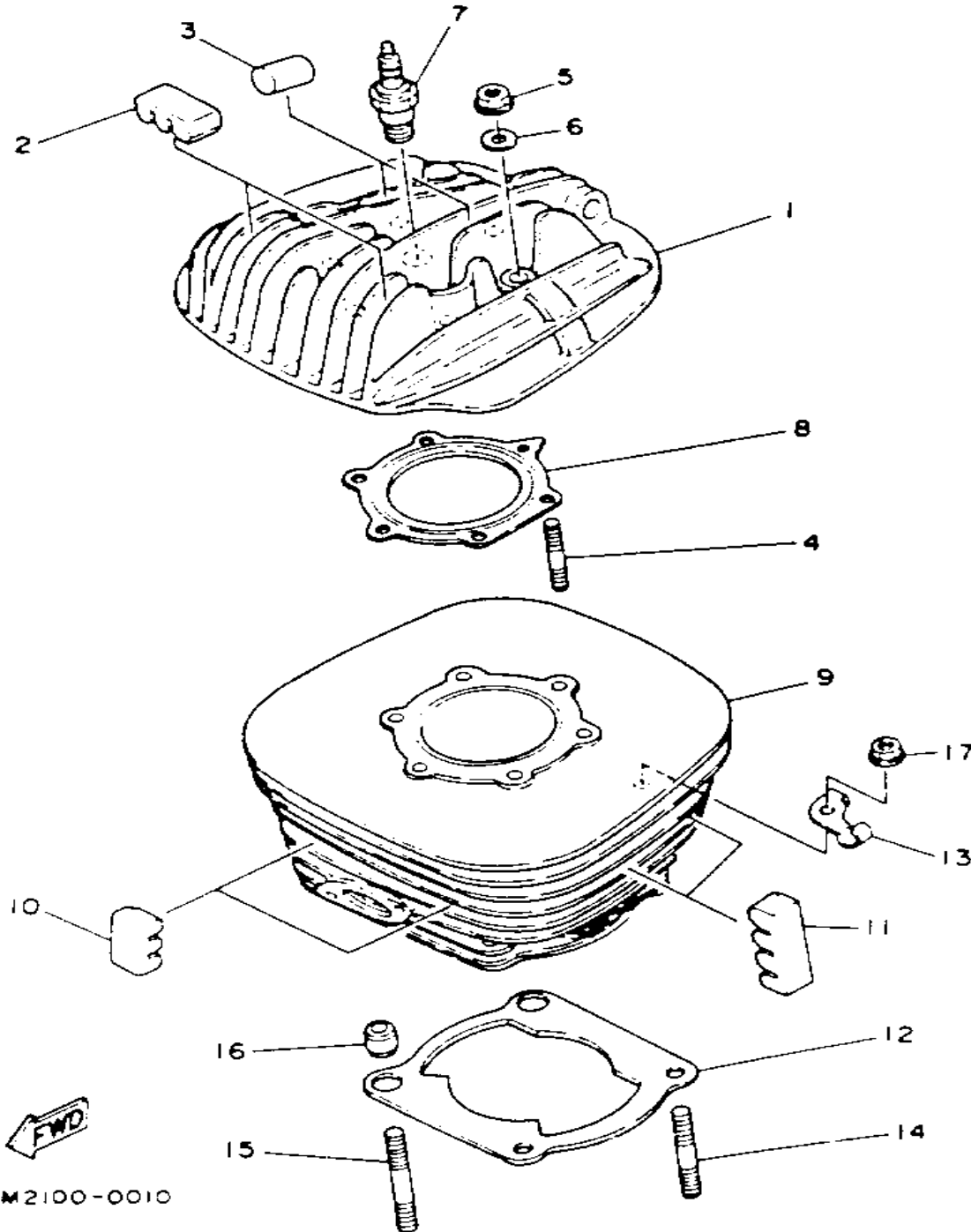
YAMAHA

GENUINE

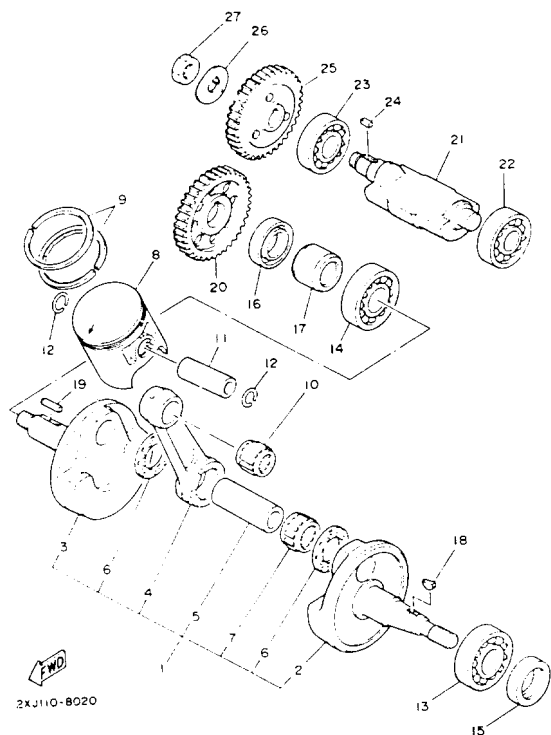
PARTS CATALOGUE

ALL TERRAIN VEHICLE

CYLINDER



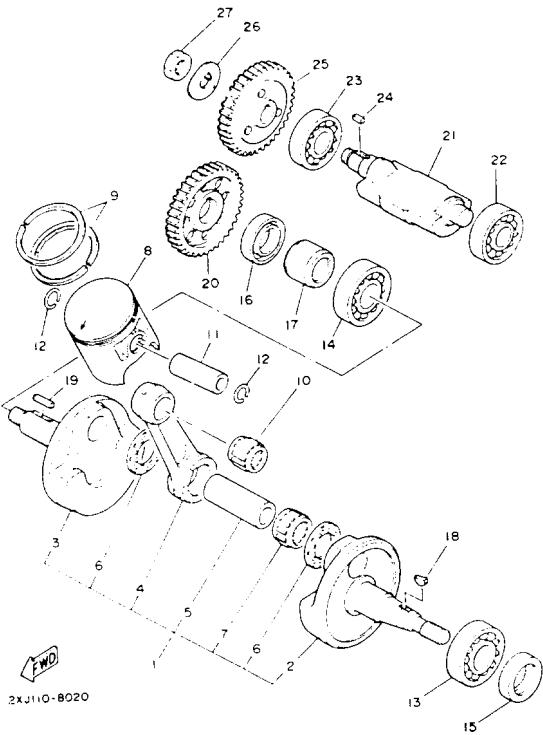
Ref. No.	Part Number	Description	Qty	Remarks
1	2XJ-11111-00-00	HEAD, CYLINDER 1	1	
2	3R9-11162-00-00	ABSORBER 2	2	
3	576-11127-00-00	ABSORBER 3	2	
4	90116-08394-00	BOLT, STUD	6	
5	95333-08600-00	NUT, HEXAGON	6	
6	90201-08649-00	WASHER, PLATE	6	
7	NGK-B8ES0-00-00	PLUG, SPARK (NGK B8ES) ...	1	UR
8	2XJ-11181-00-00	GASKET, CYLINDER HEAD 1 .	1	
9	2XJ-11311-01-00	CYLINDER 1	1	
10	3R9-11162-00-00	ABSORBER 2	2	
11	3R6-11162-00-00	ABSORBER 2	4	
12	3JM-11351-00-00	GASKET, CYLINDER	1	
13	10V-1131E-00-00	HOLDER 1	1	
14	90116-08318-00	BOLT, STUD	2	
15	90116-08388-00	BOLT, STUD	2	
16	99510-10114-00	PIN, DOWEL	2	
17	90179-08491-00	NUT, FLANGE	4	



CRANKSHAFT - PISTON

Ref. No.	Part Number	Description	Qty	Remarks
1	37F-11400-00-00	CRANKSHAFT ASSEMBLY . . .	1	
2	37F-11412-00-00	. CRANK 1	1	
3	37F-11422-00-00	. CRANK 2	1	
4	43G-11651-00-00	. ROD, CONNECTING	1	
5	37F-11681-00-00	. PIN, CRANK 1	1	
6	90209-22248-00	. WASHER	2	
7	93310-522L4-00	. BEARING	1	
8	2XJ-11631-01-97	PISTON (STD)	1	
	2XJ-11635-01-00	PISTON (0.25MM O/S)	1	AP
	2XJ-11636-01-00	PISTON (0.50MM O/S)	1	AP
9	3JM-11601-00-00	PISTON RING SET (STD)	1	
	3JM-11601-10-00	PISTON RING SET (0.25MM O/S)	1	AP
	3JM-11601-20-00	PISTON RING SET (0.50MM O/S)	1	AP
10	93310-316H6-00	BEARING	1	
11	4L0-11633-00-00	PIN, PISTON	1	
12	93450-17044-00	CIRCLIP	2	
13	93306-20562-00	BEARING	1	
14	93306-30556-00	BEARING	1	
15	93102-25331-00	OIL SEAL	1	
16	93103-32171-00	OIL SEAL (93103-32099-00) . .	1	
17	90387-206K3-00	COLLAR	1	
18	90280-03017-00	KEY, WOODRUFF	1	
19	90282-05047-00	KEY, STRAIGHT	1	
20	10V-11536-01-00	GEAR, DRIVE	1	
21	37F-11454-00-00	WEIGHT 1	1	
22	93306-20211-00	BEARING (6202SH2-C3)	1	
23	93306-20335-00	BEARING	1	

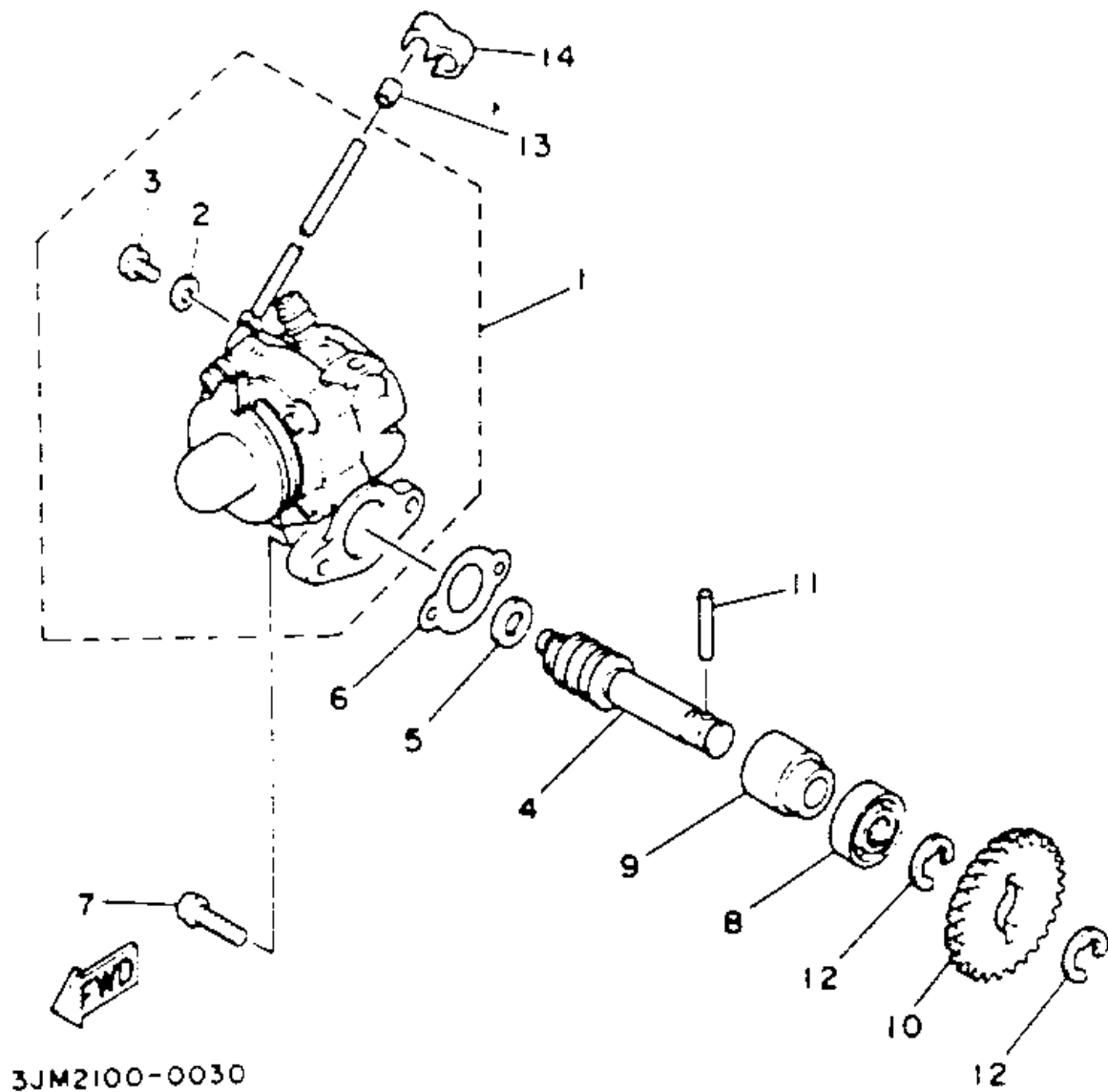
CONTINUED ON NEXT FRAME ➤



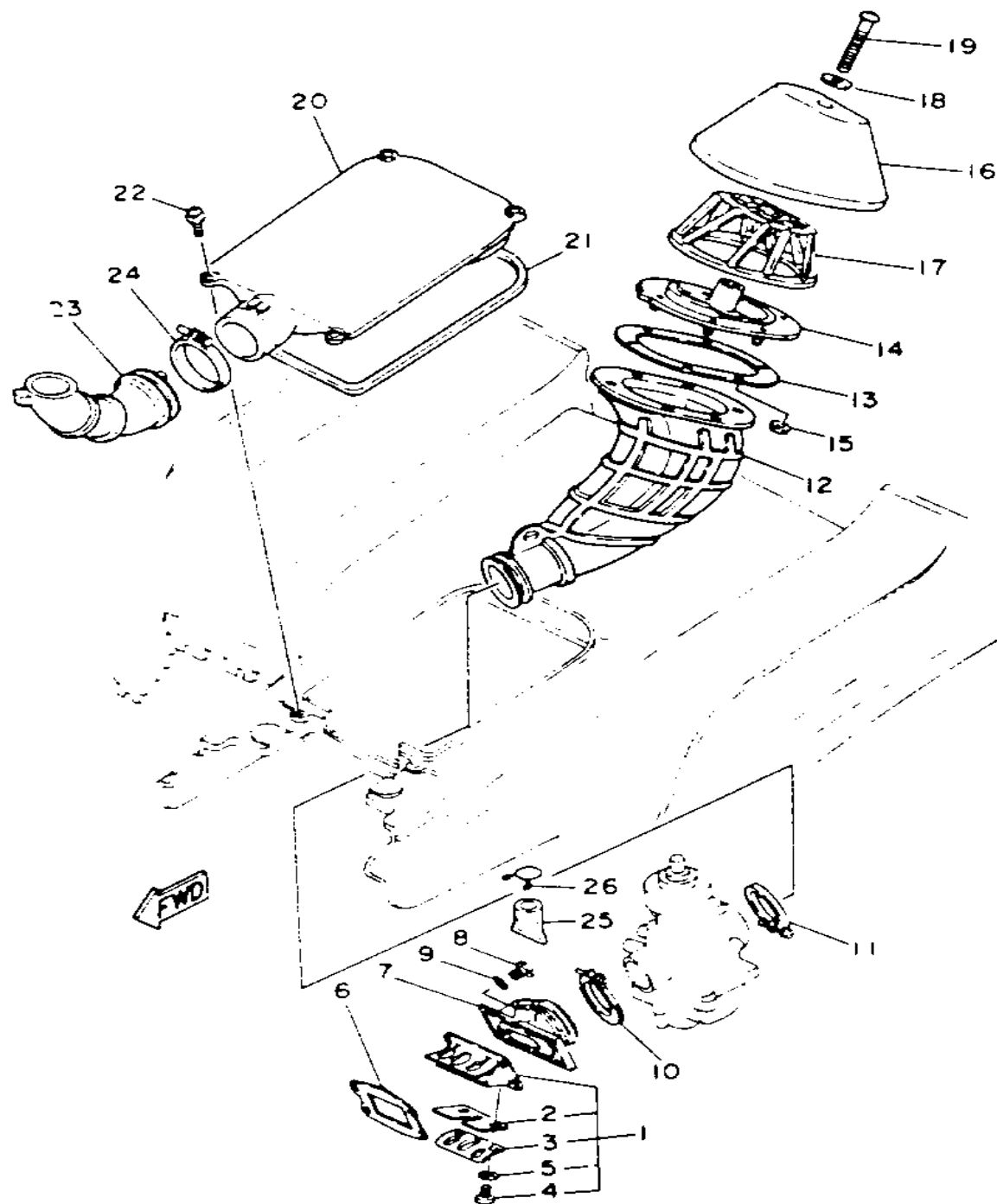
CRANKSHAFT - PISTON

Ref. No.	Part Number	Description	Qty	Remarks
24	90282-05013-00	KEY, STRAIGHT	1	
25	37F-11530-00-00	BALANCER WEIGHT GEAR COMP.	1	
26	90215-12272-00	WASHER, LOCK	1	
27	90170-12337-00	NUT	1	

OIL PUMP



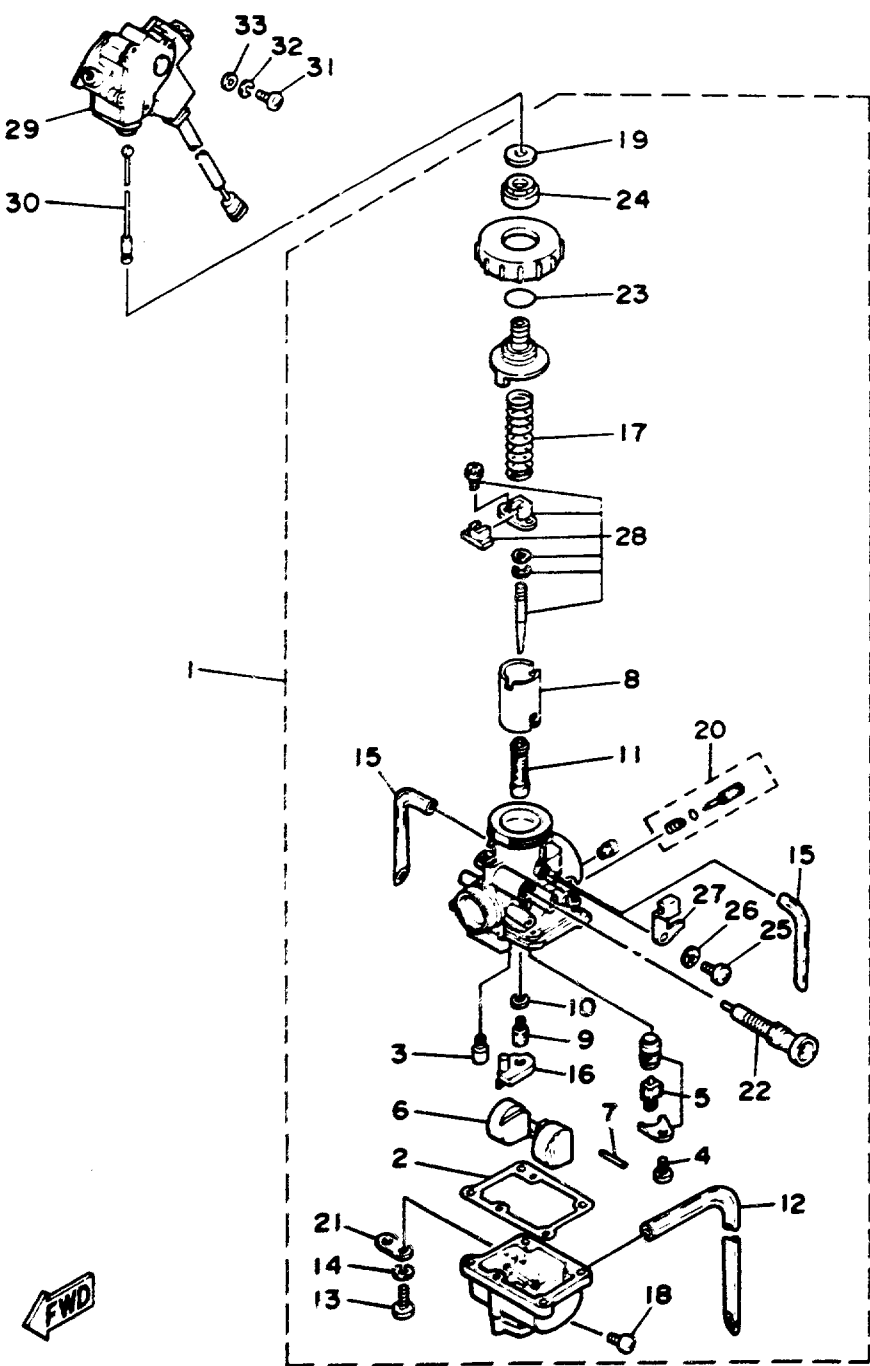
Ref. No.	Part Number	Description	Qty	Remarks
1	2XJ-13101-00-00	OIL PUMP ASSEMBLY	1	
2	90430-04004-00	. GASKET	1	
3	98901-04008-00	. SCREW, BIND	1	
4	10V-13175-00-00	SHAFT, WORM	1	
5	90201-08624-00	WASHER, PLATE	1	
6	3MT-13116-00-00	GASKET, PUMP CASE (8Y0-13116-00)	1	
7	98580-05016-00	SCREW, PAN HEAD (98501-05016)	2	
8	93101-10090-00	OIL SEAL	1	
9	1E7-13176-00-00	METAL, WRM SHAF OTR	1	
10	10V-13178-01-00	GEAR, PUMP DRIVE	1	
11	93603-22028-00	PIN, DOWEL	1	
12	93430-08036-00	CIRCLIP	2	
13	90468-02033-00	CLIP	1	
14	90468-15020-00	CLIP	1	



AIR FILTER

Ref. No.	Part Number	Description	Qty	Remarks
1	2HF-13610-01-00	REED VALVE ASSEMBLY	1	
2	2HF-13613-00-00	. REED, VALVE	2	
3	58T-13616-01-00	. STOPPER, REED VALVE	2	
4	98580-03008-00	. SCREW, PAN HEAD	4	
5	92990-03100-00	. WASHER, SPRING (92901-03100)	4	
6	3JM-13621-00-00	GASKET, VALVE SEAT	1	
7	2XJ-13565-00-00	JOINT, CARBURETOR	1	
8	97011-06025-00	BOLT (97001-06025)	4	
9	92906-06600-00	WASHER	4	
10	90450-44046-00	HOSE CLAMP ASSEMBLY	1	
11	90460-49058-00	CLAMP, HOSE	1	
12	2XJ-14453-00-00	JOINT, AIR CLEANER 1	1	
13	2XJ-14477-00-00	PLATE	1	
14	2XJ-14459-00-00	HOLDER, GUIDE	1	
15	95601-05100-00	NUT, U	6	
16	2XJ-14451-00-00	ELEMENT, AIR CLEANER	1	
17	2XJ-14458-00-00	GUIDE	1	
18	90209-06096-00	WASHER	1	
19	92580-06560-00	SCREW PAN HEAD	1	
20	2XJ-14412-01-00	CAP, CLEANER CASE 1	1	
21	36F-14452-00-00	SEAL	1	
22	90159-06085-00	SCREW, WITH WASHER	4	
23	2XJ-14437-00-00	DUCT	1	
24	90460-56105-00	CLAMP, HOSE	1	
25	59V-14457-00-00	SEAL	1	
26	90467-22080-00	CLIP	1	

CARBURETOR

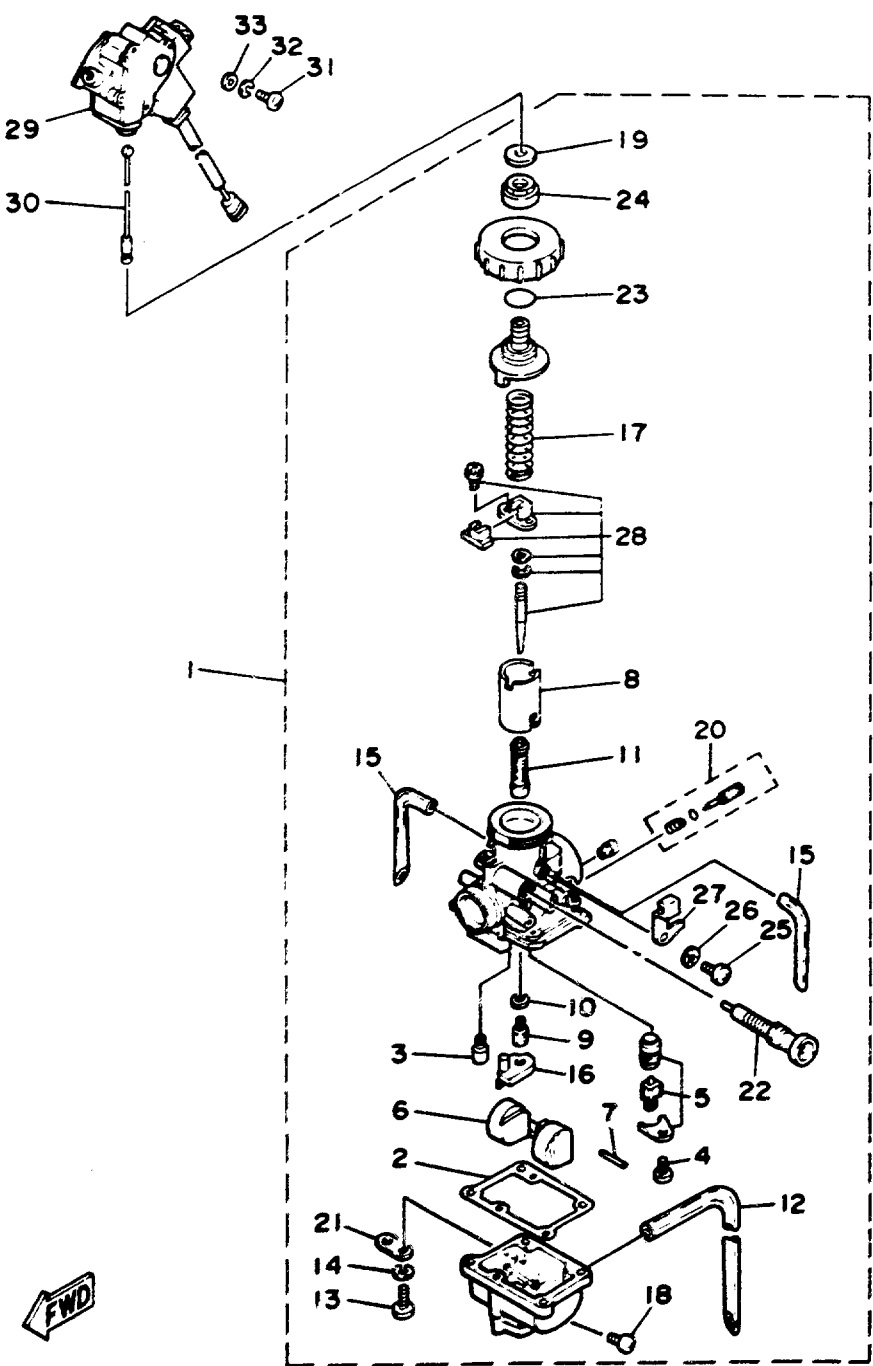


2XJ110-8050

Ref. No.	Part Number	Description	Qty	Remarks
1	2XJ-14101-01-00	CARBURETOR ASSEMBLY 1	1	
2	304-14184-00-00	. GASKET, FLOAT CHAMBER	1	
3	260-14142-32-00	. JET, PILOT (# 32.5)	1	
4	98580-04008-00	. SCREW, PAN HEAD	1	
5	2MA-14107-28-00	. NEEDLE VALVE SET	1	
6	4L0-14185-00-00	. FLOAT	1	
7	537-14186-00-00	. PIN, FLOAT	1	
8	2XJ-14112-20-00	. VALVE, THROTTLE 1	1	
9	137-14143-46-A1	. JET, MAIN (#230)	1	
10	137-14153-00-00	. WASHER, MAIN JET	1	
11	4L0-14141-46-00	. NOZZLE, MAIN	1	
12	90445-08376-00	. HOSE	1	
13	98511-04016-00	. SCREW, PAN HEAD	4	
14	92990-04100-00	. WASHER, SPRING	4	
15	4L0-14197-00-00	. PIPE	2	
16	2GU-14153-00-00	. RING	1	
17	248-14131-00-00	. SPRING, THROTTLE VALVE	1	
18	12R-14191-00-00	. PLUG, DRAIN	1	
19	2GU-14952-00-00	. WASHER	1	
20	10W-14104-00-00	. AIR SCREW SET	1	
21	500-14146-00-00	. PLATE	1	
22	2GU-14171-00-00	. PLUNGER, STARTER	1	
23	558-14147-00-00	. O-RING	1	
24	2GU-14161-00-00	. NUT, CABLE ADJUSTING	1	
25	98580-05010-00	. SCREW, PAN HEAD	1	
26	92990-05100-00	. WASHER, SPRING	1	
27	2GU-14243-00-00	. PLATE	1	
28	2XJ-1490J-00-00	. NEEDLE SET	1	
29	2XJ-8259E-01-00	SWITCH ASSEMBLY	1	

CONTINUED ON NEXT FRAME ➤

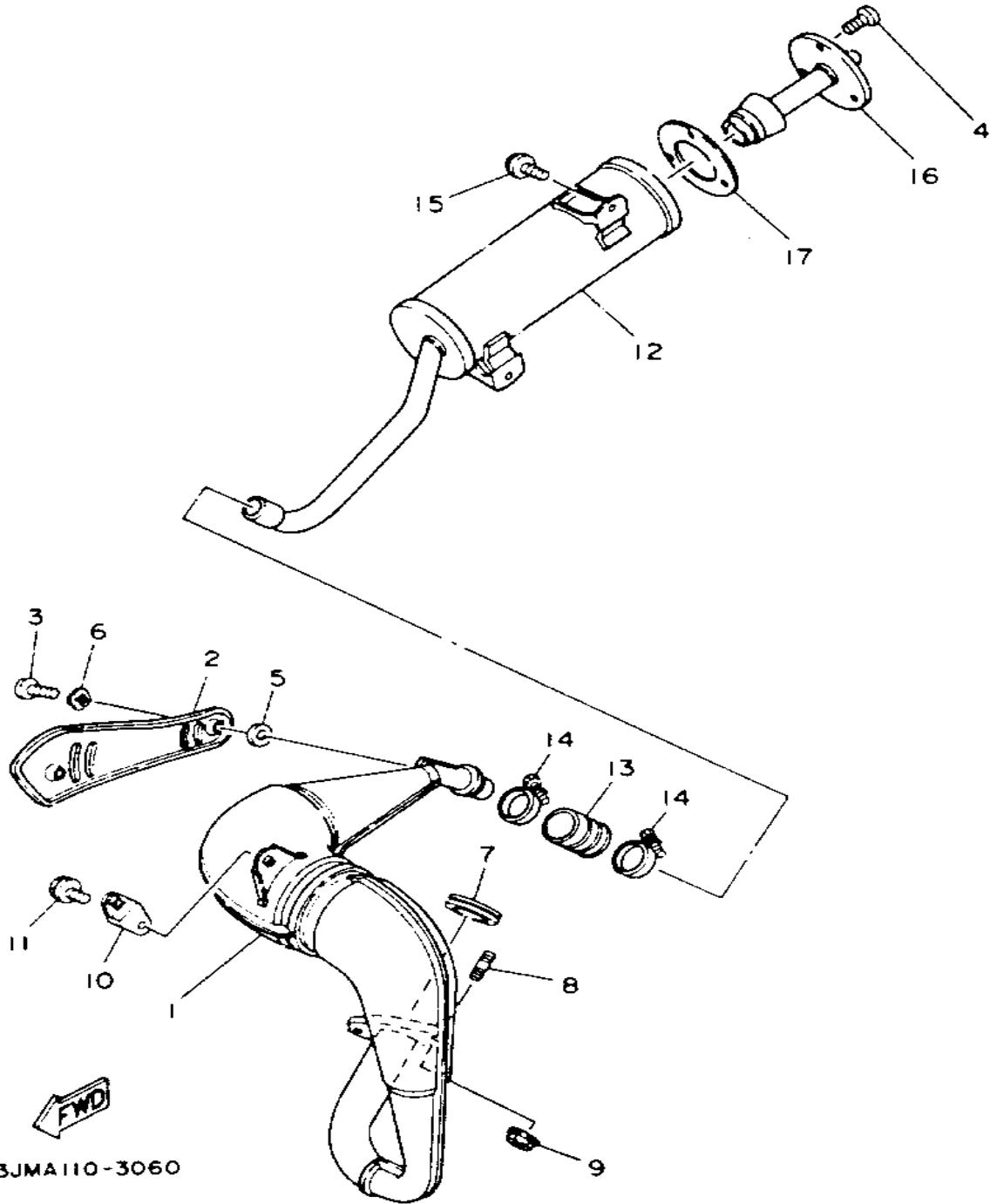
CARBURETOR



2XJ110-B050

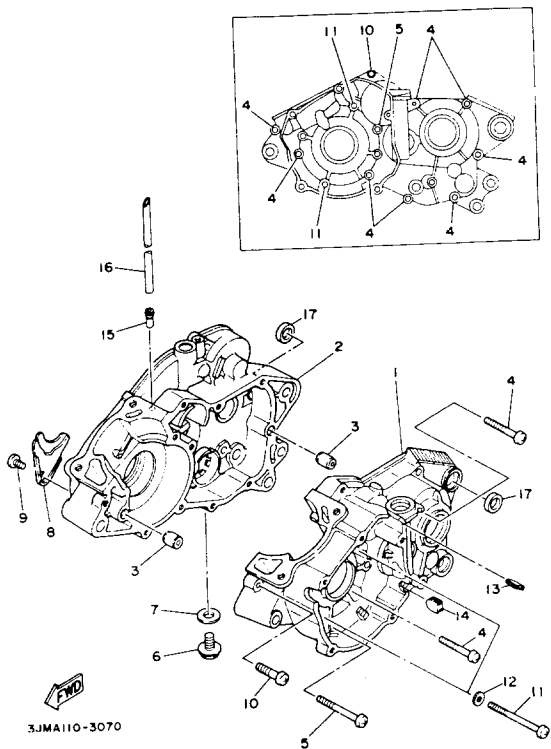
Ref. No.	Part Number	Description	Qty	Remarks
30	2GU-2633K-00-00	WIRE, INNER 1	1	
31	98580-03010-00	SCREW, PAN HEAD (98502-03010)	3	
32	92990-03100-00	WASHER, SPRING (92901-03100)	3	
33	92902-03600-00	WASHER	3	

EXHAUST



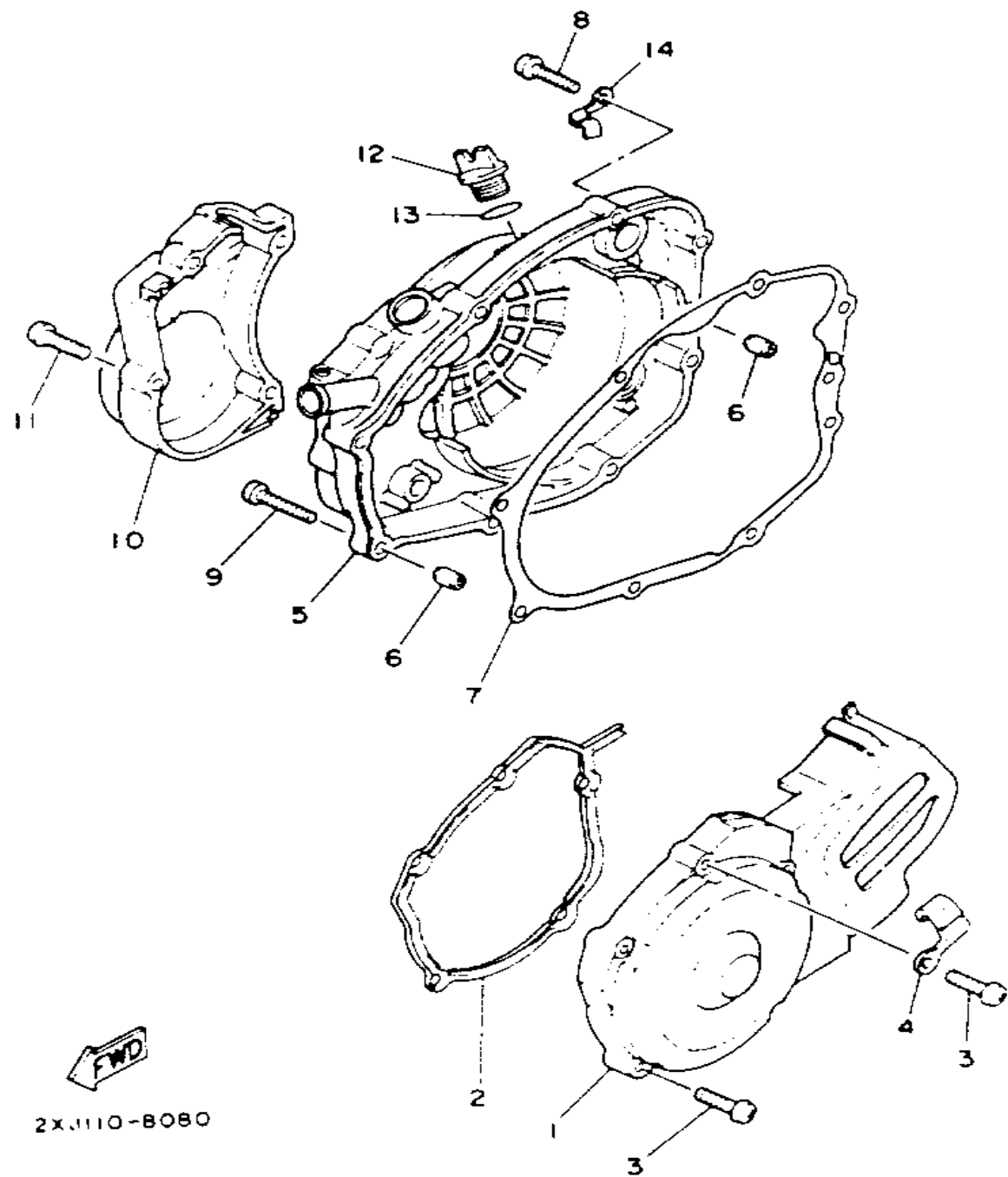
Ref. No.	Part Number	Description	Qty	Remarks
1	2XJ-14610-00-00	EXHAUST PIPE ASSEMBLY 1 .	1	
2	2XJ-14718-00-00	PROTECTOR, MUFFLER 1	1	
3	98906-06010-00	SCREW, BIND	2	
4	98906-06010-00	SCREW, BIND	3	
5	4BD-14766-00-00	WASHER, PROTECTOR	2	
6	90206-06090-00	WASHER, WAVE	2	
7	3PA-14613-10-00	GASKET, EXHAUST PIPE	1	
8	90116-08042-00	BOLT, STUD	2	
9	90179-08270-00	NUT	2	
10	565-14771-00-00	STAY, MUFFLER 1	1	
11	95816-06012-00	BOLT, FLANGE	2	
12	2XJ-14753-00-00	SILENCER, EXHAUST	1	
13	1W2-14714-00-00	GASKET, MUFFLER	1	
14	90450-37022-00	HOSE CLAMP ASSEMBLY ...	2	
15	95811-08016-00	BOLT, FLANGE	2	
16	2XJ-14752-00-00	PIPE, OUTLET	1	
17	2XJ-14755-10-00	GASKET, SILENCER	1	

CRANKCASE



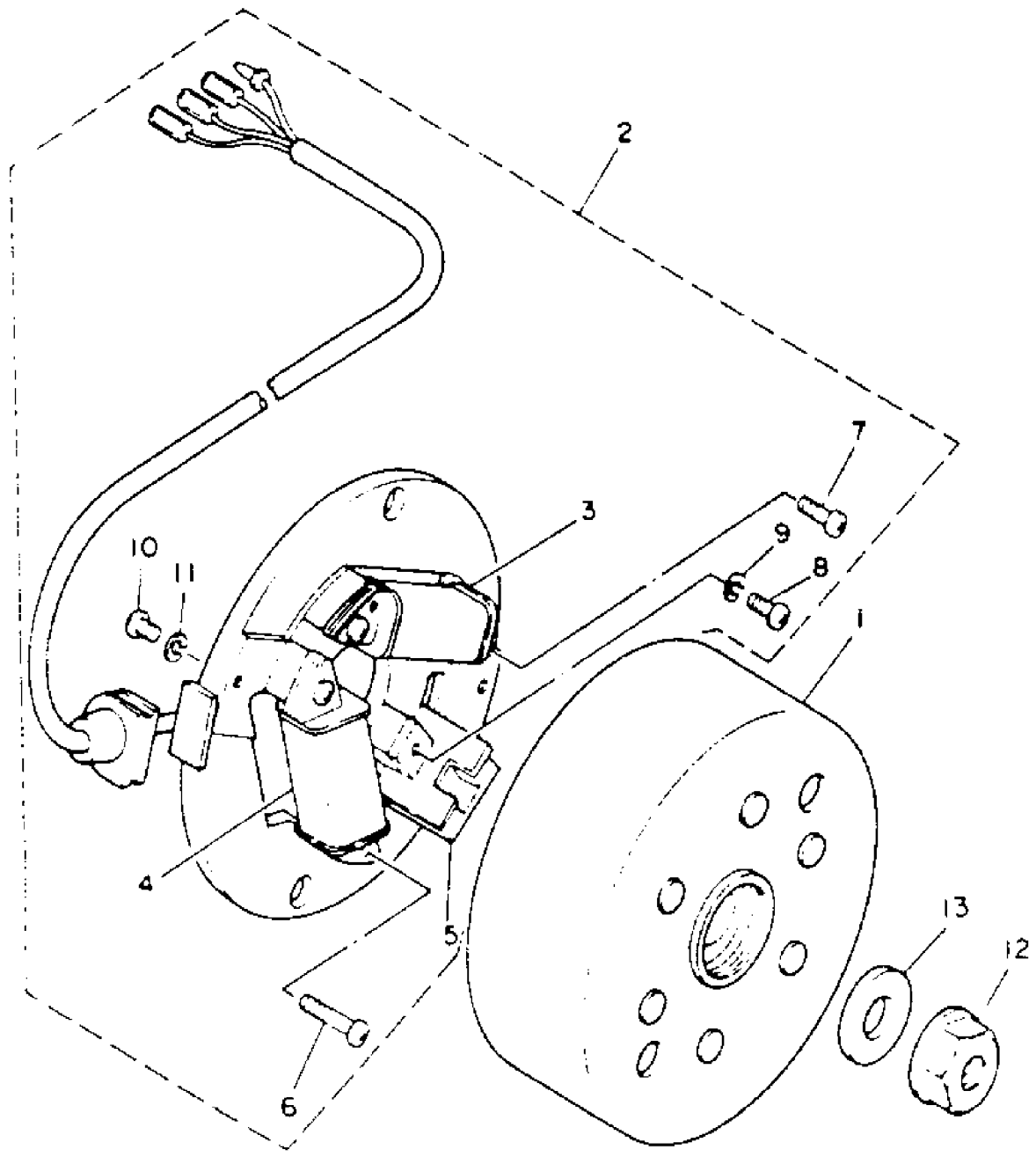
Ref. No.	Part Number	Description	Qty	Remarks
1	2XJ-15111-01-00	CRANKCASE 1	1	
2	2XJ-15121-00-00	CRANKCASE 2	1	
3	99510-12016-00	PIN, DOWEL	2	
4	98580-06545-00	SCREW PAN HEAD (92503-06045)	8	
5	92580-06560-00	SCREW PAN HEAD	1	
6	90340-12097-00	PLUG, STRAIGHT SCREW	1	
7	90201-12172-00	WASHER, PLATE	1	
8	37F-15128-00-00	HOLDER	1	
9	92501-08010-00	SCREW, PAN HEAD	1	
10	98580-06030-00	SCREW PAN HEAD	1	
11	98501-06075-00	SCREW, PAN HEAD	2	
12	92901-06600-00	WASHER	2	
13	90480-01209-00	GROMMET	1	
14	90338-09206-00	PLUG	1	
15	137-13115-00-00	CONNECTOR, SUCTION PIPE .	1	
16	90446-09155-00	HOSE	1	
17	90201-166L5-00	WASHER, PLATE	2	

CRANKCASE COVER 1



Ref. No.	Part Number	Description	Qty	Remarks
1	2XJ-15411-00-00	COVER, CRANKCASE 1	1	
2	2XJ-15379-00-00	SEAL, CRANKCASE	1	
3	98516-06030-00	SCREW, PAN HEAD	5	
4	90465-10069-00	CLAMP	1	
5	2XJ-15420-00-00	CRANKCASE COVER ASSEMBLY 2	1	
6	99530-10014-00	PIN, DOWEL	2	
7	3JM-15451-01-00	GASKET, CRANKCASE COVER 1	1	
8	98516-06030-00	SCREW, PAN HEAD	7	
9	98506-06035-00	SCREW, PAN HEAD	1	
10	37F-15416-00-00	COVER, OIL PUMP	1	
11	98516-06030-00	SCREW, PAN HEAD	4	
12	1RG-15363-00-00	PLUG, OIL	1	
13	93210-19123-00	O-RING	1	
14	367-13174-00-00	HOLDER, OIL PIPE	1	

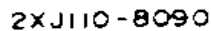
GENERATOR



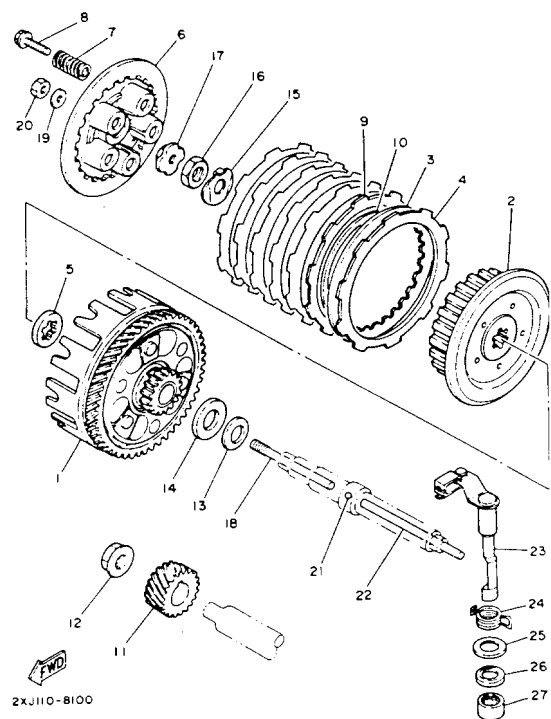
Ref. No.	Part Number	Description	Qty	Remarks
1	2XJ-85550-M0-00	ROTOR ASSEMBLY	1	
2	3JM-85560-00-00	BASE ASSEMBLY	1	
3	37A-85520-M1-00	. COIL, CHARGE	1	
4	2XJ-81313-M0-00	. COIL, LIGHTING 1	1	
5	2AL-85580-M0-00	. COIL, PULSER	1	
6	98511-04020-00	. SCREW, PAN HEAD	2	
7	98511-04012-00	. SCREW, PAN HEAD	2	
8	98580-04010-00	. SCREW, PAN HEAD	1	
9	92901-04100-00	. WASHER, SPRING	1	
10	98580-04008-00	. SCREW, PAN HEAD	1	
11	92901-04100-00	. WASHER, SPRING	1	
12	90179-12421-00	NUT, SPEC'L SHAPE	1	
13	90201-123L6-00	WASHER, PLATE	1	


3JM2100-0300

STARTER

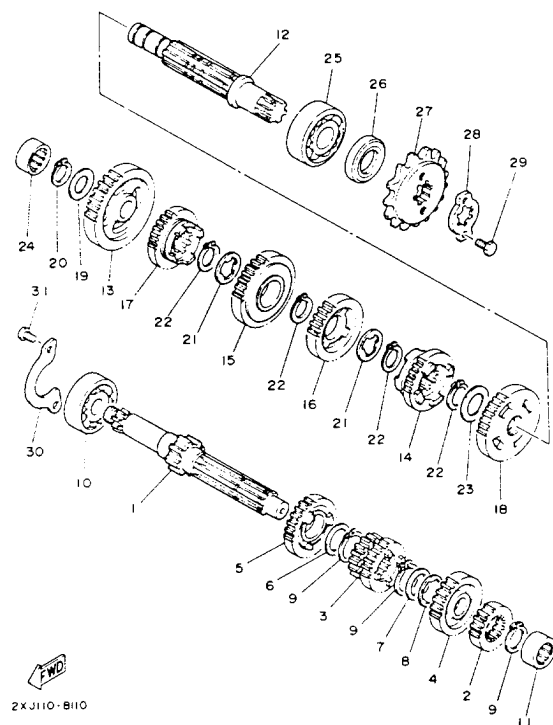


Ref. No.	Part Number	Description	Qty	Remarks
1	10V-15660-00-00	KICK AXLE ASSEMBLY	1	
2	10V-15641-00-00	GEAR, KICK (23T)	1	
3	90468-26048-00	CLIP	1	
4	90201-200J7-00	WASHER, PLATE	1	
5	90508-26667-00	SPRING, TORSION	1	
6	10V-15666-00-00	SPACER	1	
7	10V-15651-00-00	GEAR, KICK IDLE (29T)	1	
8	90201-154E8-00	WASHER, PLATE (1.0T)	2	
9	93440-15012-00	CIRCLIP	2	
10	2XJ-15620-10-00	KICK CRANK ASSEMBLY	1	
11	90179-12374-00	NUT, SPEC'L SHAPE	1	
12	93102-20309-00	SEAL, OIL	1	



CLUTCH

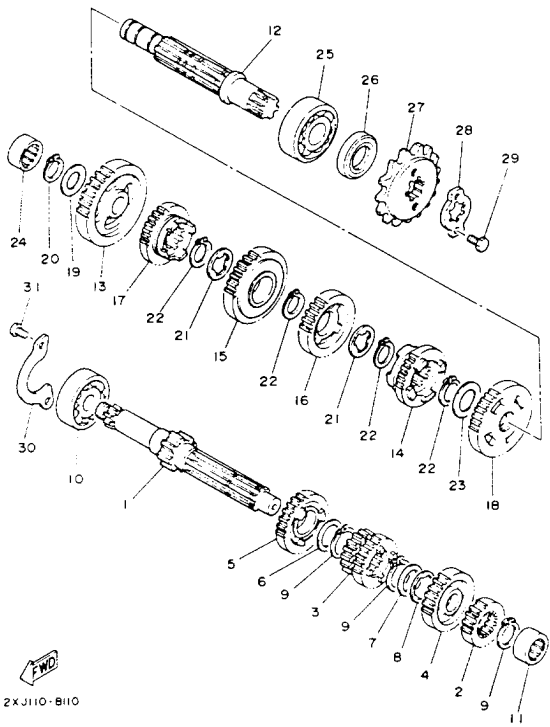
Ref. No.	Part Number	Description	Qty	Remarks
1	3JM-16150-01-00	PRIMARY DRIVEN GEAR COMP.	1	
2	2TV-16371-00-00	BOSS, CLUTCH	1	
3	1V1-16324-00-00	PLATE, CLUTCH 1	6	
4	21V-16321-00-00	PLATE, FRICTION	6	
5	2TV-16154-00-00	PLATE, THRUST 1	1	
6	37F-16351-00-00	PLATE, PRESSURE 1	1	
7	90501-20568-00	SPRING, COMPRESSION	5	
8	90119-05001-00	BOLT, WITH WASHER	5	
9	1HX-16331-00-00	PLATE, FRICTION 2	1	
10	1HX-16383-00-00	SPRING, CLUTCH BOSS	1	
11	2A6-16111-00-00	GEAR, PRI DRIVE	1	
12	90179-12567-00	NUT	1	
13	90208-18046-00	WASHER, CONICAL SPRING ..	1	
14	90201-180P2-00	WASHER, PLATE	1	
15	90215-12271-00	WASHER, LOCK	1	
16	90170-12370-00	NUT	1	
17	30X-16358-00-00	PLATE, PUSH	1	
18	1W1-16356-02-00	ROD, PUSH 1	1	
19	92990-06200-00	WASHER	1	
20	95380-06600-00	NUT	1	
21	93503-16010-00	BALL	1	
22	2J5-16357-00-00	ROD, PUSH 2	1	
23	37F-16380-02-00	PUSH LEVER ASSEMBLY	1	
24	90508-20555-00	SPRING, TORSION	1	
25	90201-14217-00	WASHER, PLATE	1	
26	93104-14059-00	OIL SEAL, SO-TYPE	1	
27	93315-21429-00	BEARING	1	



TRANSMISSION

Ref. No.	Part Number	Description	Qty	Remarks
1	2XJ-17411-00-00	AXLE, MAIN	1	
2	2XJ-17121-00-00	GEAR, 2ND PINION (14T)	1	
3	2XJ-17131-00-00	GEAR, 3RD-4TH PINION (15T-16T)	1	
4	2XJ-17161-00-00	GEAR, 6TH PINION (21T)	1	
5	2XJ-17151-00-00	GEAR, 5TH PINION (18T)	1	
6	90201-20266-00	WASHER, PLATE (1.0T)	1	
7	90201-206L6-00	WASHER, PLATE	1	
8	90209-16133-00	WASHER	1	
9	93410-20038-00	CIRCLIP	3	
10	93306-20417-00	BEARING (B62042RS)	1	
11	93311-31576-00	BEARING	1	
12	37F-17421-00-00	AXLE, DRIVE	1	
13	2XJ-17211-00-00	GEAR, 1ST WHEEL (34T)	1	
14	2XJ-17261-00-00	GEAR, 6TH WHEEL (19T)	1	
15	2XJ-17231-00-00	GEAR, 3RD WHEEL (25T)	1	
16	2XJ-17241-00-00	GEAR, 4TH WHEEL (20T)	1	
17	2XJ-17251-00-00	GEAR, 5TH WHEEL (19T)	1	
18	2XJ-17221-00-00	GEAR, 2ND WHEEL (31T)	1	
19	90201-150J4-00	WASHER, PLATE	1	
20	93440-15012-00	CIRCLIP	1	
21	90209-18135-00	WASHER	2	
22	93410-22039-00	CIRCLIP	4	
23	90201-22555-00	WASHER, PLATE	1	
24	93311-51554-00	BEARING	1	
25	93306-30421-00	BEARING (B6304C3)	1	
26	93102-20143-00	OIL SEAL	1	
27	93832-13164-00	SPROCKET, DRIVE (13T)	1	
28	5H0-17456-00-00	HOLDER, SPROCKET	1	

CONTINUED ON NEXT FRAME ➤

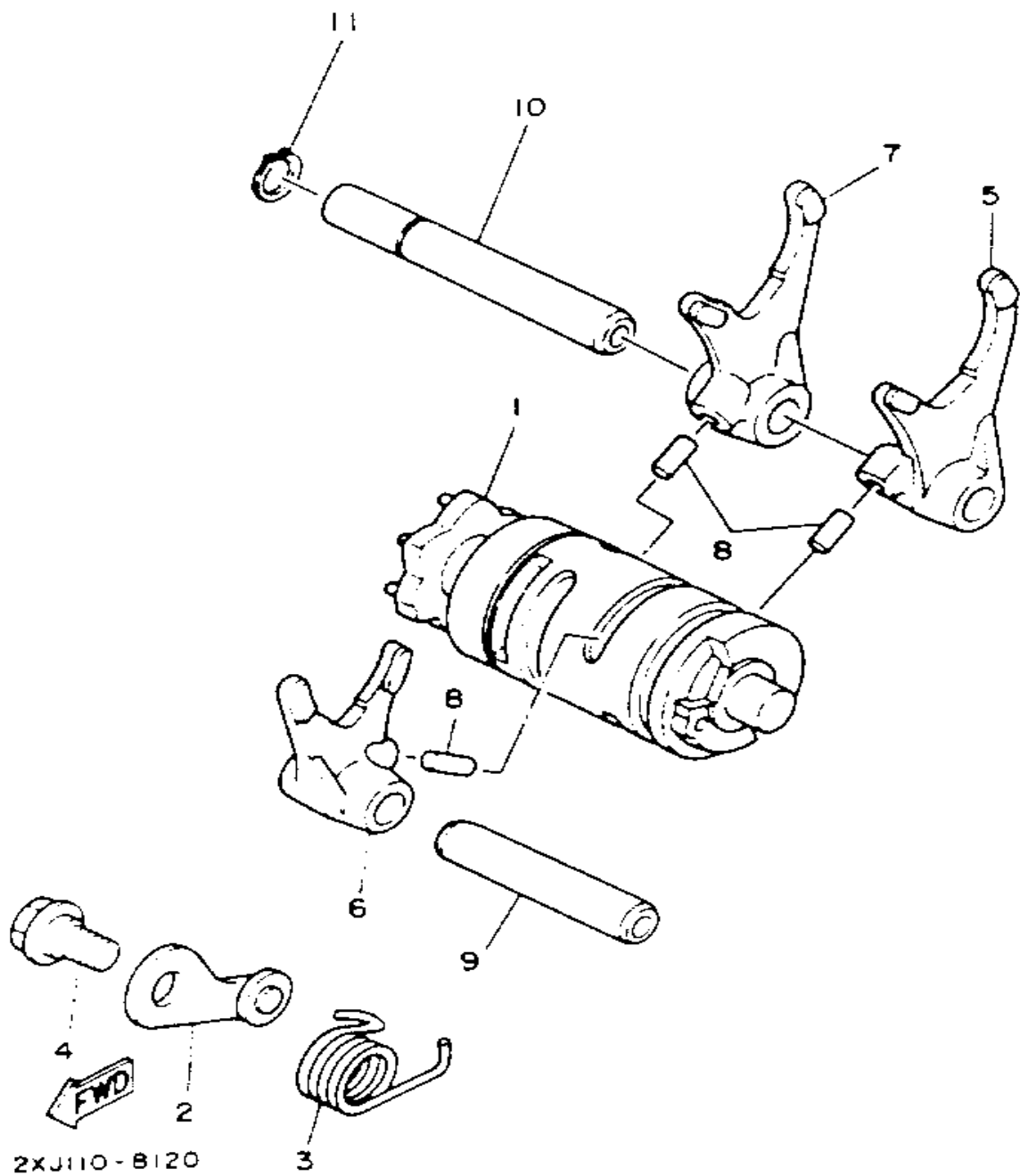


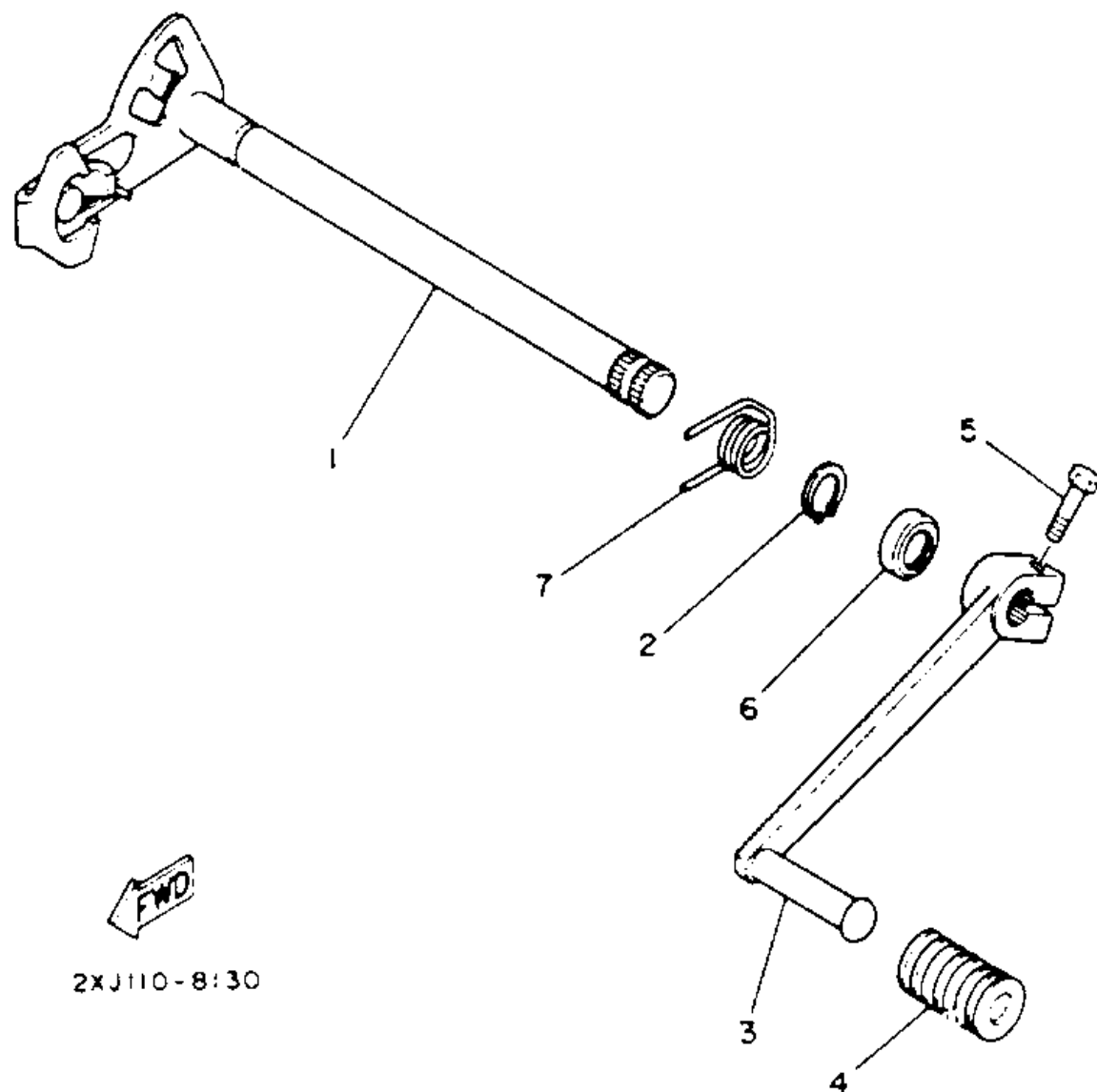
TRANSMISSION

Ref. No.	Part Number	Description	Qty	Remarks
29	97021-06012-00	BOLT	2	
30	10V-17471-00-00	PLATE, COVER	1	
31	98511-06012-00	SCREW, PAN HEAD	2	

SHIFT CAM - FORK

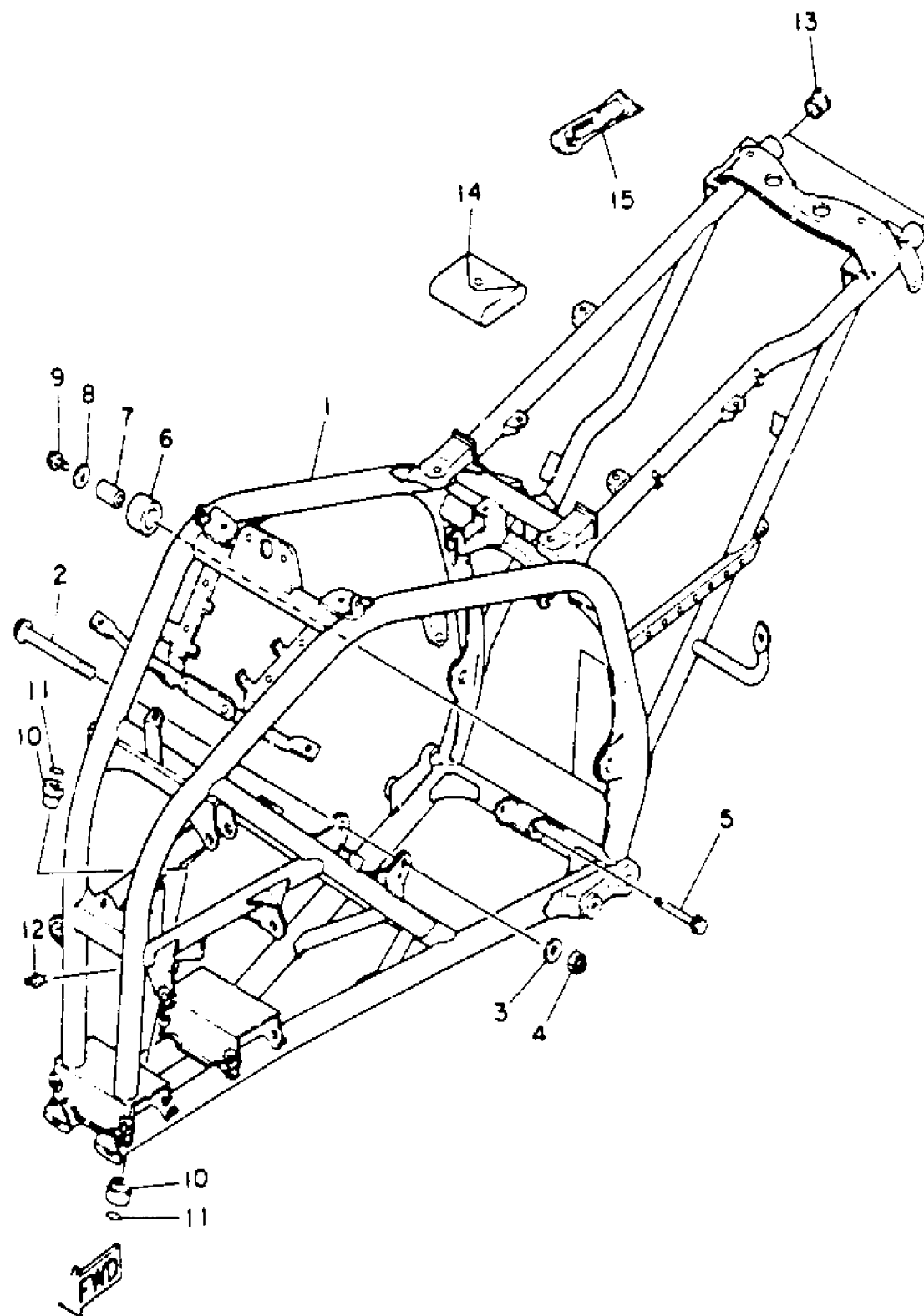
Ref. No.	Part Number	Description	Qty	Remarks
1	2XJ-18540-01-00	SHIFT CAM ASSEMBLY	1	
2	10V-18140-00-00	STOPPER LEVER ASSEMBLY .	1	
3	90508-29749-00	SPRING, TORSION	1	
4	90109-063F7-00	BOLT	1	
5	37F-18511-00-00	FORK, SHIFT 1	1	
6	37F-18512-00-00	FORK, SHIFT 2	1	
7	37F-18513-00-00	FORK, SHIFT 3	1	
8	90250-06013-00	PIN, STRAIGHT	3	
9	5X5-18531-01-00	BAR, SHIFT FORK GUIDE 1 ...	1	
10	34X-18535-00-00	BAR, SHIFT FORK GUIDE 2 ...	1	
11	99009-10400-00	CIRCLIP	1	





SHIFT SHAFT

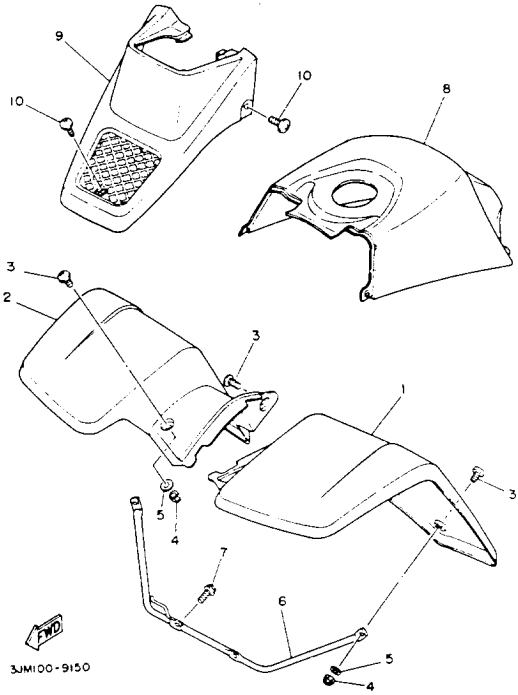
Ref. No.	Part Number	Description	Qty	Remarks
1	37F-18101-02-00	SHIFT SHAFT ASSEMBLY	1	
2	99006-10600-00	CIRCLIP	1	
3	2XJ-18111-00-00	PEDAL, SHIFT	1	
4	132-18113-01-00	COVER, SHIFT PEDAL	1	
5	97016-06020-00	BOLT	1	
6	93101-12060-00	OIL SEAL	1	
7	90508-32553-00	SPRING, TORSION	1	



3JM00-9140

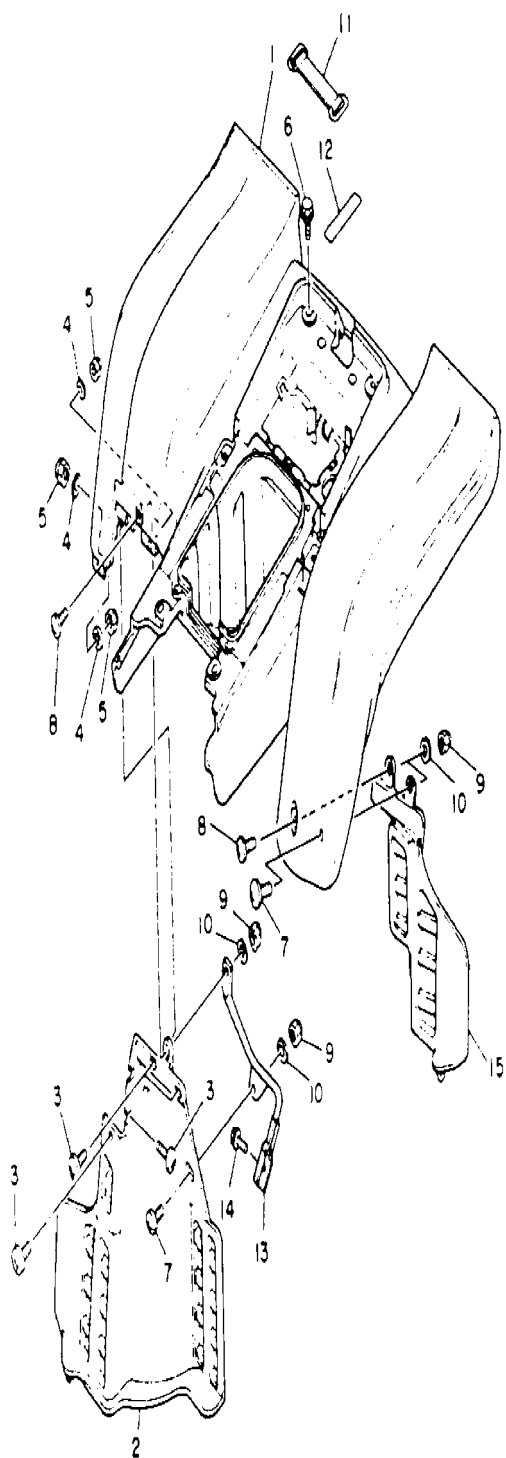
FRAME

Ref. No.	Part Number	Description	Qty	Remarks
1	2XJ-21110-10-35	FRAME COMP.	1	SILVER
2	90105-10328-00	BOLT, WASHER BASED	1	
3	90201-10774-00	WASHER, PLATE	1	
4	90185-10060-00	NUT, SELF-LOCKING	1	
5	90105-08221-00	BOLT, WASHER BASED	1	
6	30X-22178-00-00	TENSIONER	2	
7	4V4-22184-00-00	BUSH	2	
8	90201-08753-00	WASHER, PLATE	2	
9	95811-08012-00	BOLT, FLANGE	2	
10	90381-15040-00	BUSH, SOLID	2	
11	93210-15566-00	O-RING	2	
12	93700-06M03-00	NIPPLE, GREASE	1	
13	90338-23172-00	PLUG	2	
14	2XJ-28100-00-00	TOOL KIT	1	
15	1NV-2811A-00-00	GAUGE, AIR	1	

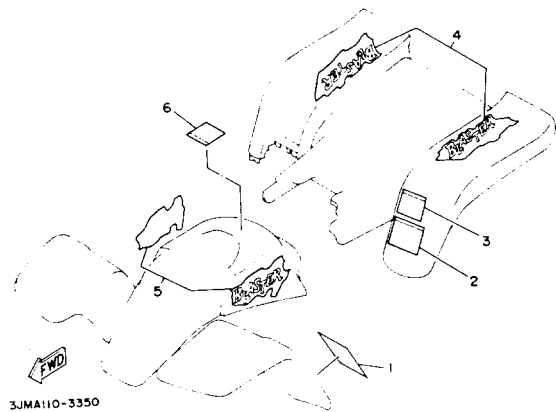


FRONT FENDER

Ref. No.	Part Number	Description	Qty	Remarks
1	2XJ-21511-40-00	FENDER, FRONT	1	PURPLISH WHITE SOLID 1
2	2XJ-21556-40-00	FENDER, FRONT 2	1	PURPLISH WHITE SOLID 1
3	90149-06306-00	SCREW	6	
4	95601-06100-00	NUT, U	4	
5	92990-06200-00	WASHER	4	
6	2XJ-21513-00-00	STAY, FENDER 1	1	
7	95811-06012-00	BOLT, FLANGE	2	
8	2XJ-2171A-70-00	COVER, TOP	1	DEEP VIOLET SOLID 1
9	2XJ-23391-70-00	PANEL, FRONT	1	DEEP VIOLET SOLID 1
10	90154-05051-00	SCREW, BINDING	3	

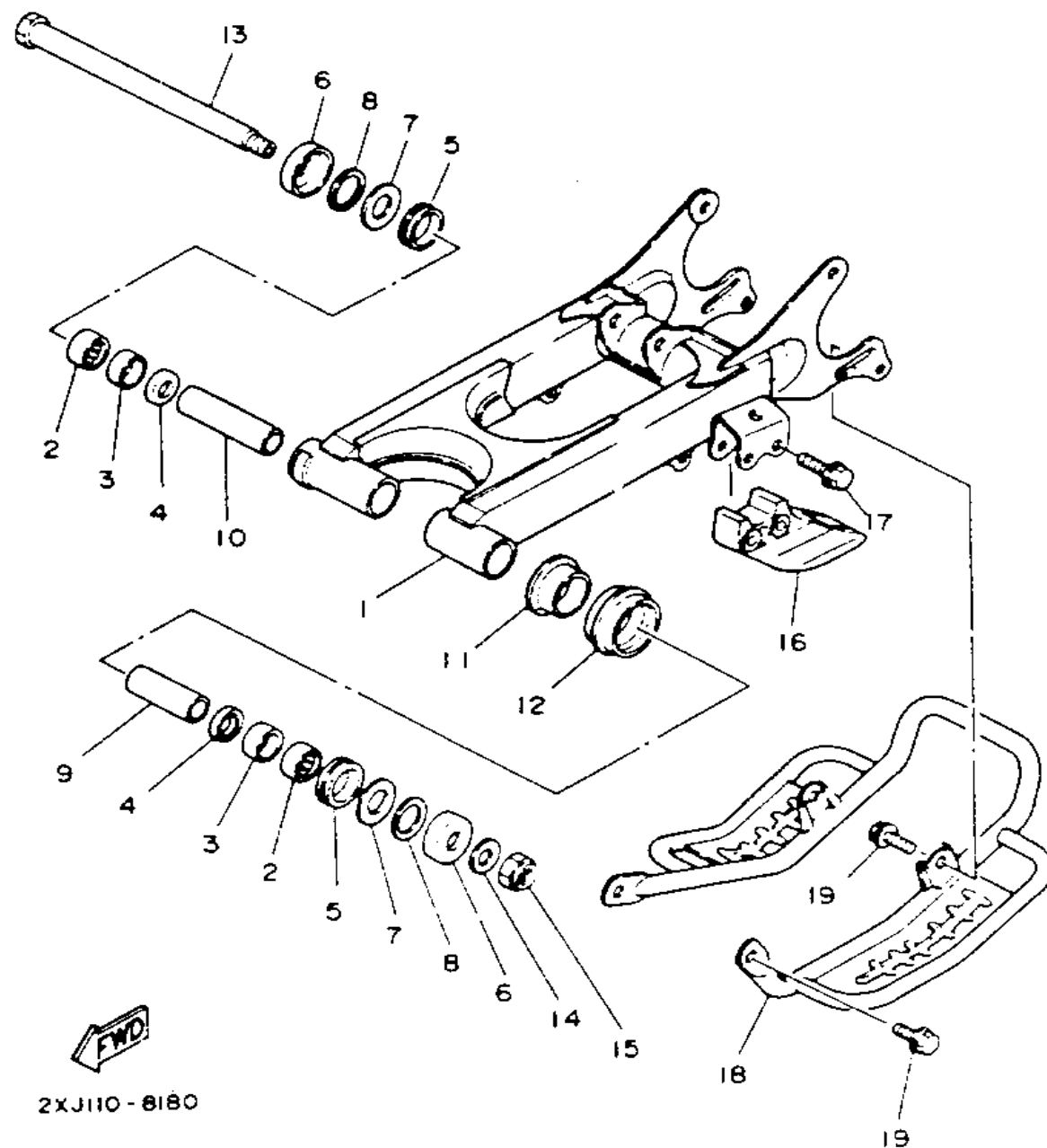


REAR FENDER



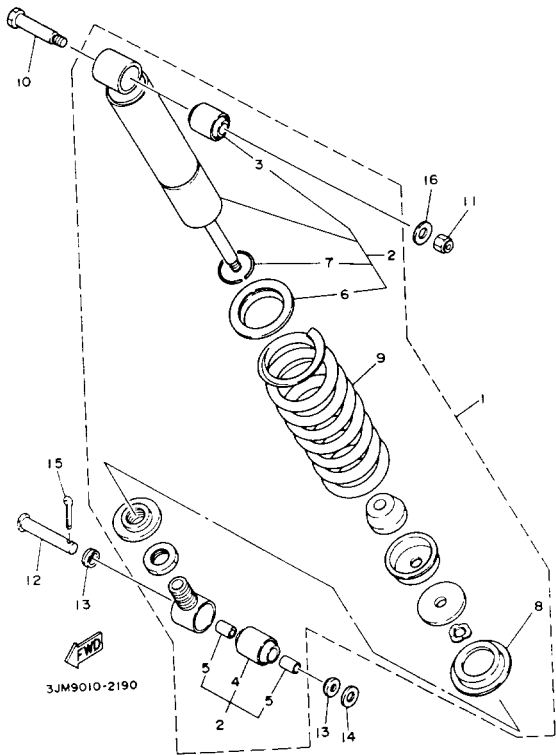
EMBLEM - LABEL 1

Ref. No.	Part Number	Description	Qty	Remarks
1	3JN-21568-00-00	LABEL, WARNING	1	
2	3JM-21696-00-00	LABEL, CAUTION	1	
3	3JN-2151H-00-00	LABEL 5	1	
4	3JM-2165A-40-00	GRAPHIC SET REAR F	1	
5	3JM-21570-40-00	GRPHC SET, FRT FNDRFRONT FENDER	1	
6	3FA-2415A-00-00	LABEL, CAUTION	1	



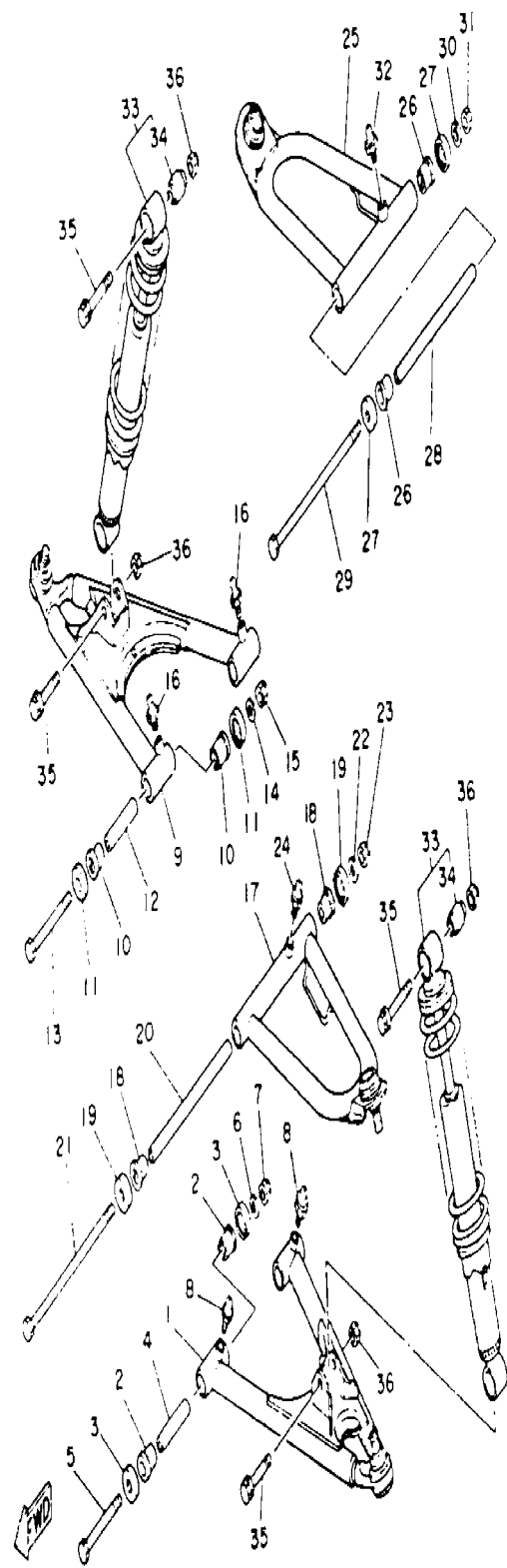
SWING ARM

Ref. No.	Part Number	Description	Qty	Remarks
1	2XJ-22110-00-35	REAR ARM COMP.	1	SILVER
2	93317-32231-00	BEARING	2	
3	90380-22111-00	BUSH, SOLID	2	
4	93106-22019-00	OIL SEAL (DC 22-28-8)	2	
5	93108-35004-00	OIL SEAL (35-41-8)	2	
6	2K6-22128-01-00	COVER, THRUST 1	2	
7	90201-244A9-00	WASHER, PLATE	2	
8	240-22127-00-00	SHIM	1	UN
9	2XJ-22123-00-00	BUSH 1	1	
10	2XJ-22124-00-00	BUSH 2	1	
11	2GU-22155-00-00	PIPE	1	
12	2GU-22151-10-00	SEAL, GUARD	1	
13	2JN-22141-00-00	SHAFT, PIVOT	1	
14	90201-14218-00	WASHER, PLATE	1	
15	90185-14070-00	NUT, SELF-LOCKING	1	
16	38W-22199-00-00	SUPPORT, CHAIN	1	
17	95811-08040-00	BOLT, FLANGE	2	
18	2XJ-2219X-00-00	COVER	1	
19	95811-08012-00	BOLT, FLANGE	4	



REAR SHOCKS

Ref. No.	Part Number	Description	Qty	Remarks
1	2XJ-22210-10-P1	SHK/ABS ASSEMBLY, REARREAR	1	VIVID MAGENTA SOLID 2
2	2XJ-22201-20-00	. DAMPER SUB ASSEMBLY ..	1	
3	1NU-22216-00-00	.. BUSH, REAR SHOCK ABSORBER	1	
4	1NU-22226-00-00	.. BUSH, SHOCK ABSORBER LOWER	1	
5	90380-12051-00	.. BUSH, SOLID	2	
6	22W-22223-00-00	.. SEAT, SPRING LOWER	1	
7	93440-42101-00	.. CIRCLIP	1	
8	22W-22214-01-00	. GUIDE, SPRING 1	1	
9	2XJ-22212-00-P1	. SPRING	1	VIVID MAGENTA SOLID 2
10	90109-10736-00	BOLT	1	
11	95601-10100-00	NUT, U (95602-10100-00)	1	
12	90240-12092-00	PIN, CLEVIS	1	
13	1W1-22128-00-00	COVER, THRUST 1	2	
14	92990-12600-00	WASHER, PLATE	1	
15	91401-30030-00	PIN, COTTER	1	
16	90201-102G9-00	WASHER, PLATE	1	

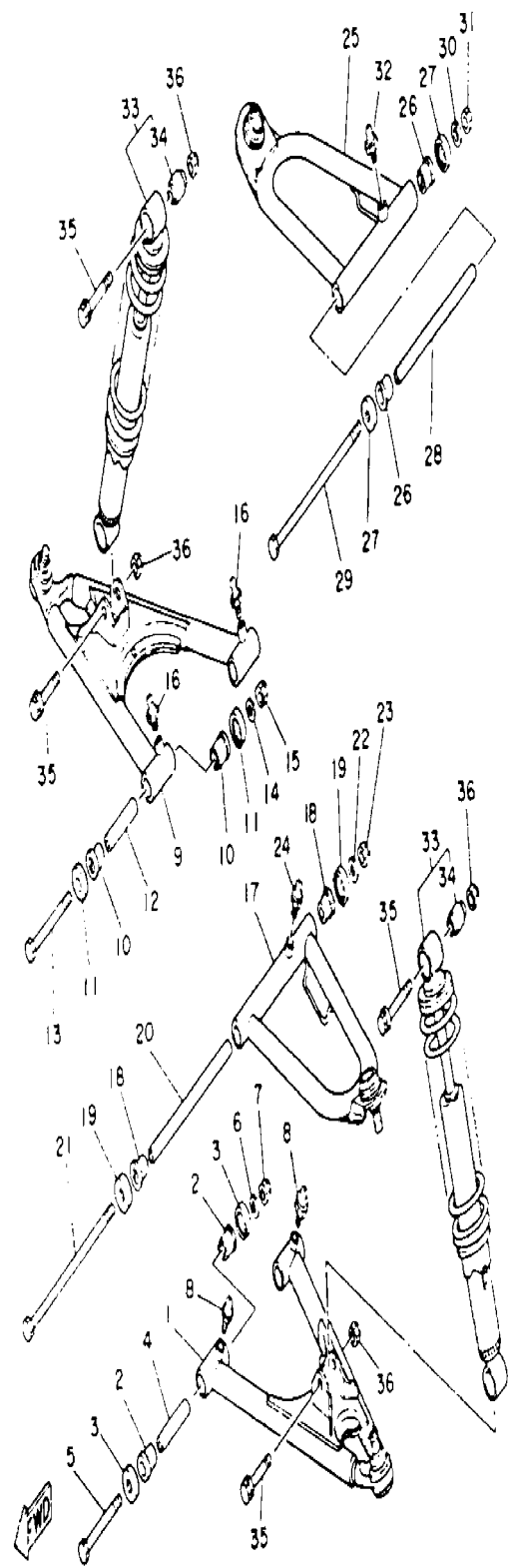


2XJ110-8200

FRONT SUSPENSION - WHEEL

Ref. No.	Part Number	Description	Qty	Remarks
1	3JM-23570-00-35	FRONT LOWER ARM COMP. (LEFT)	1	SILVER
2	90381-15088-00	BUSH, SOLID	4	
3	1UY-23517-00-00	COVER, THRUST 1	4	
4	90387-101R3-00	COLLAR	2	
5	90101-10655-00	BOLT	2	
6	90201-100F7-00	WASHER, PLATE	2	
7	90185-10120-00	NUT, SELF-LOCKING	2	
8	93700-06M03-00	NIPPLE, GREASE	2	
9	3JM-23580-00-35	FRONT LOWER ARM COMP. (RIGHT)	1	SILVER
10	90381-15088-00	BUSH, SOLID	4	
11	1UY-23517-00-00	COVER, THRUST 1	4	
12	90387-101R3-00	COLLAR	2	
13	90101-10655-00	BOLT	2	
14	90201-100F7-00	WASHER, PLATE	2	
15	90185-10120-00	NUT, SELF-LOCKING	2	
16	93700-06M03-00	NIPPLE, GREASE	2	
17	2XJ-23540-00-35	FRONT UPPER ARM COMP. (LEFT)	1	SILVER
18	90381-15088-00	BUSH, SOLID	2	
19	1UY-23517-00-00	COVER, THRUST 1	2	
20	90387-101U6-00	COLLAR	1	
21	336-22141-00-00	SHAFT, PIVOT	1	
22	90201-100F7-00	WASHER, PLATE	1	
23	90185-10120-00	NUT, SELF-LOCKING	1	
24	93700-06M03-00	NIPPLE, GREASE	1	
25	2XJ-23550-00-35	FRONT UPPER ARM COMP. (RIGHT)	1	SILVER
26	90381-15088-00	BUSH, SOLID	2	

CONTINUED ON NEXT FRAME ➤

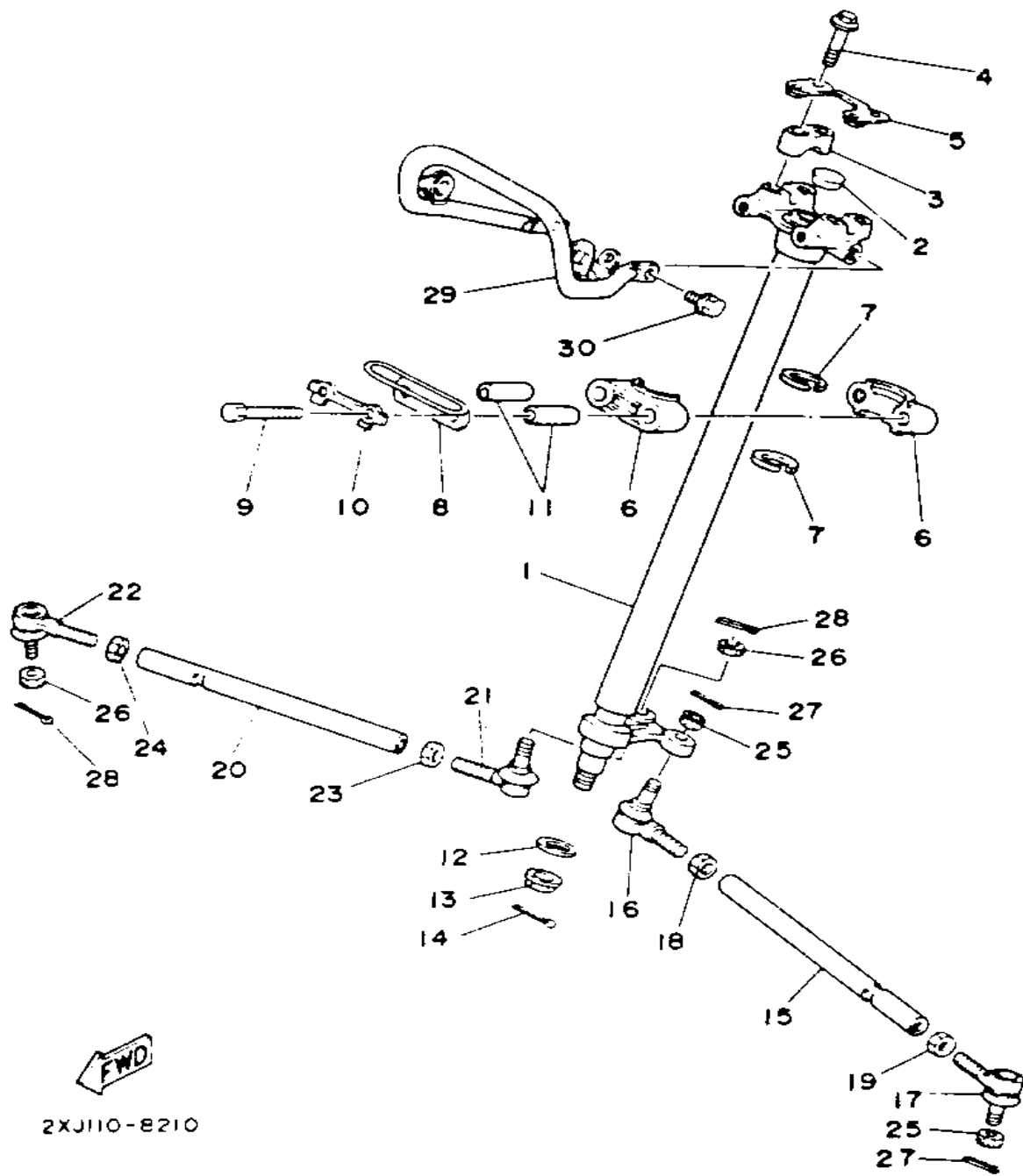


2XJ110-8200

FRONT SUSPENSION - WHEEL

Ref. No.	Part Number	Description	Qty	Remarks
27	1UY-23517-00-00	COVER, THRUST 1	2	
28	90387-101U6-00	COLLAR	1	
29	336-22141-00-00	SHAFT, PIVOT	1	
30	90201-100F7-00	WASHER, PLATE	1	
31	90185-10120-00	NUT, SELF-LOCKING	1	
32	93700-06M03-00	NIPPLE, GREASE	1	
33	2XJ-23350-00-P1	SHOCK ABSORBER ASSEMBLY	2	VIVID MAGENTA SOLID 2
34	2XJ-2331R-00-00	. DAMPER, BUSH B	2	
35	90105-10388-00	BOLT, WASHER BASED	4	
36	90185-10060-00	NUT, SELF-LOCKING	4	

STEERING

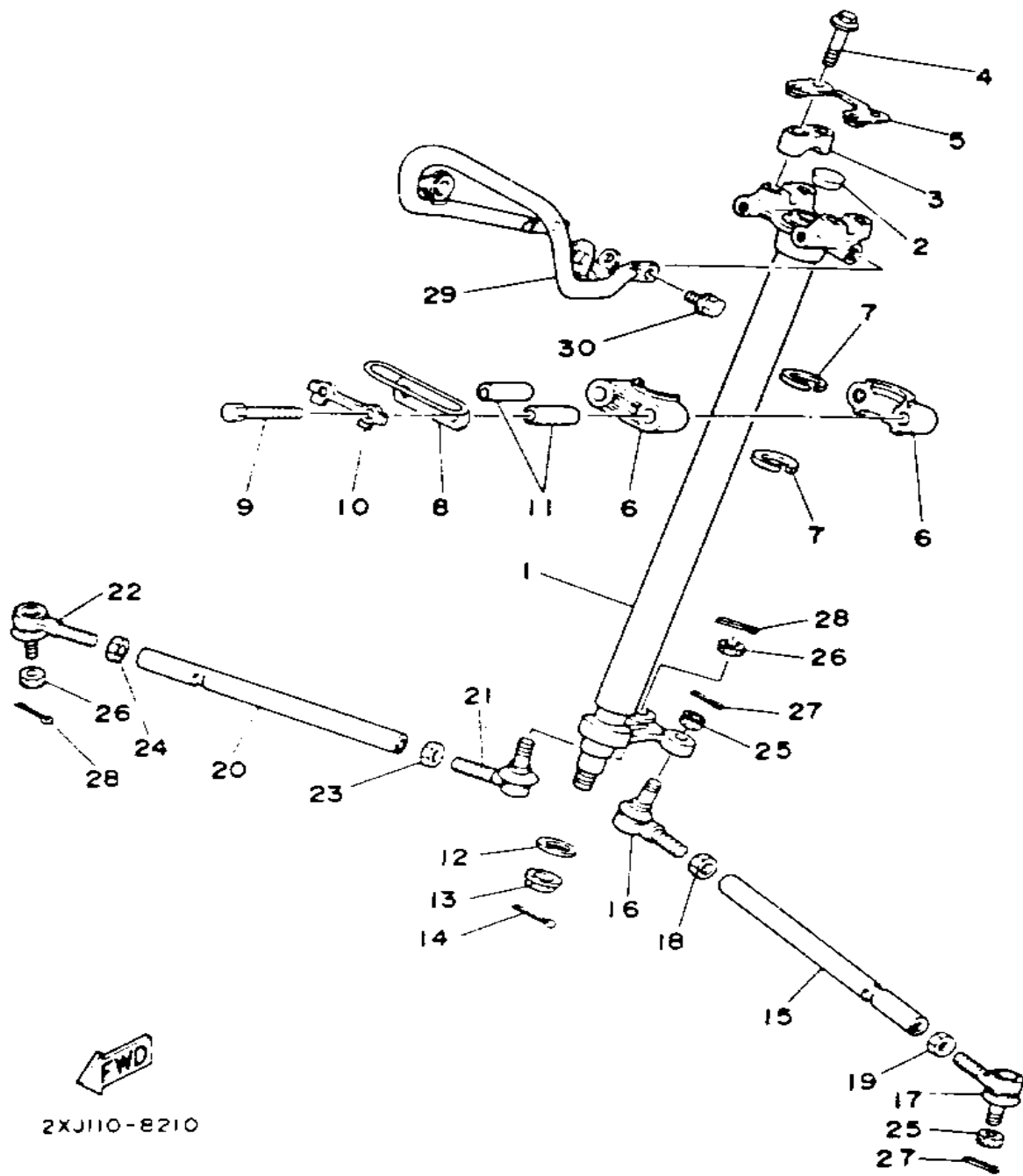


Ref. No.	Part Number	Description	Qty	Remarks
1	2XJ-23813-00-00	COLUMN, STEERING 2	1	
2	90336-28053-00	PLUG, TAPER	1	
3	1E6-23441-00-00	HOLDER, HANDLE UPR	2	
4	95811-08035-00	BOLT, FLANGE (95821-08035)	4	
5	2GU-2629K-00-00	STAY	1	
6	1UY-23812-00-00	PLANE BEARING, STEERING	2	
7	93112-31011-00	OIL SEAL	2	
8	2XJ-23868-00-00	BRACKET, STEERING LOWER	1	
9	98021-08060-00	BOLT	2	
10	1UY-23894-01-00	WASHER, LOCK 1	1	
11	90387-106T4-00	COLLAR (903-87090-R0-00)	2	
12	90201-10774-00	WASHER, PLATE	1	
13	90185-10115-00	NUT, SELF-LOCKING	1	
14	91490-20020-00	PIN, COTTER	1	
15	2XJ-23831-01-00	ROD, TIE	1	
16	1UY-23841-01-00	JOINT, UNIVERSAL 1	1	
17	1UY-23845-01-00	JOINT, UNIVERSAL 2	1	
18	95303-10700-00	NUT	1	
19	90170-10186-00	NUT	1	
20	2XJ-23831-01-00	ROD, TIE	1	
21	1UY-23841-01-00	JOINT, UNIVERSAL 1	1	
22	1UY-23845-01-00	JOINT, UNIVERSAL 2	1	
23	95303-10700-00	NUT	1	
24	90170-10186-00	NUT	1	
25	90171-10046-00	NUT, CASTLE	2	
26	90171-10046-00	NUT, CASTLE	2	
27	91490-20020-00	PIN, COTTER	2	
28	91490-20020-00	PIN, COTTER	2	
29	2XJ-23174-00-00	STAY, HEADLIGHT	1	

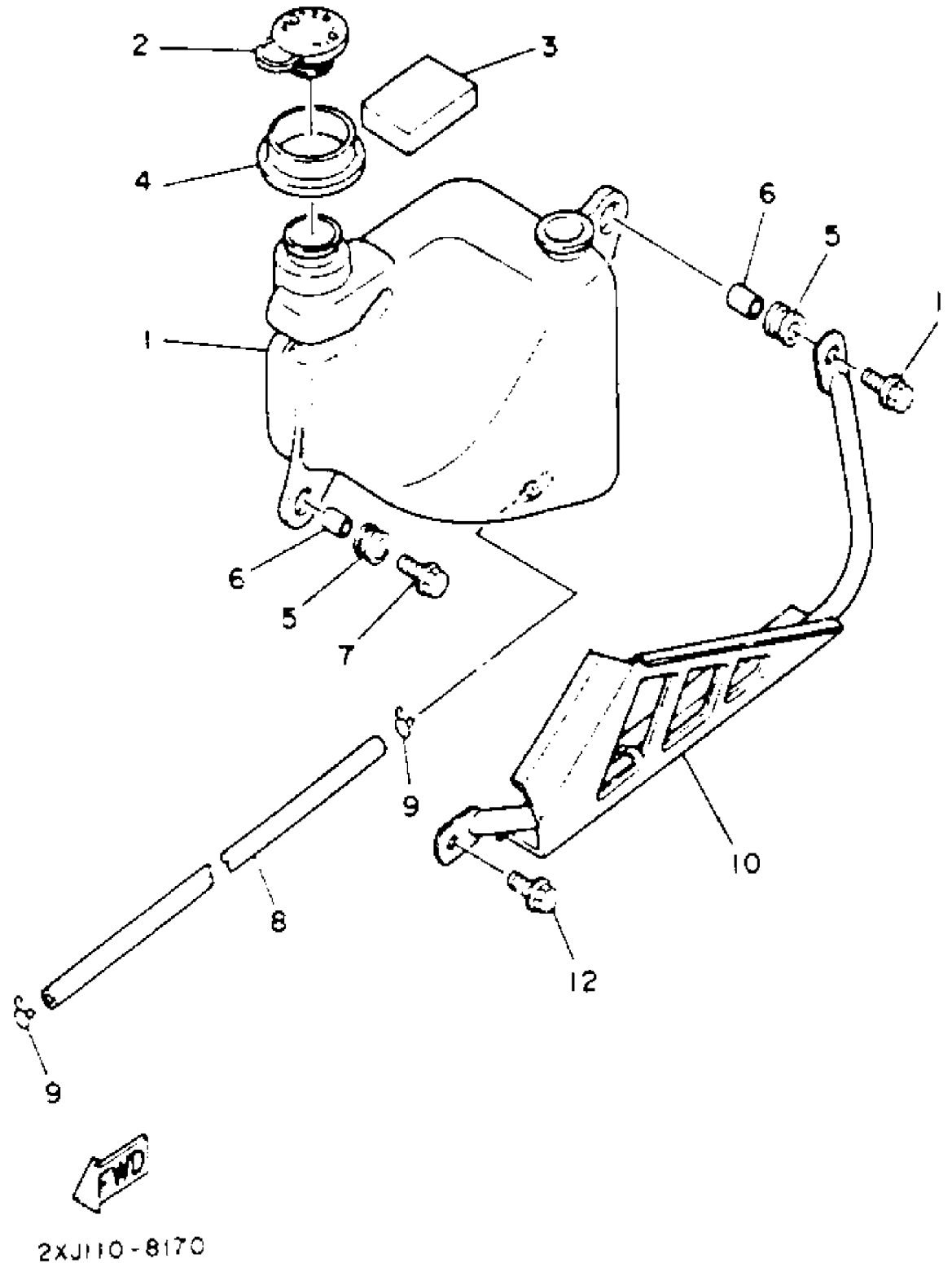
CONTINUED ON NEXT FRAME ➤

STEERING

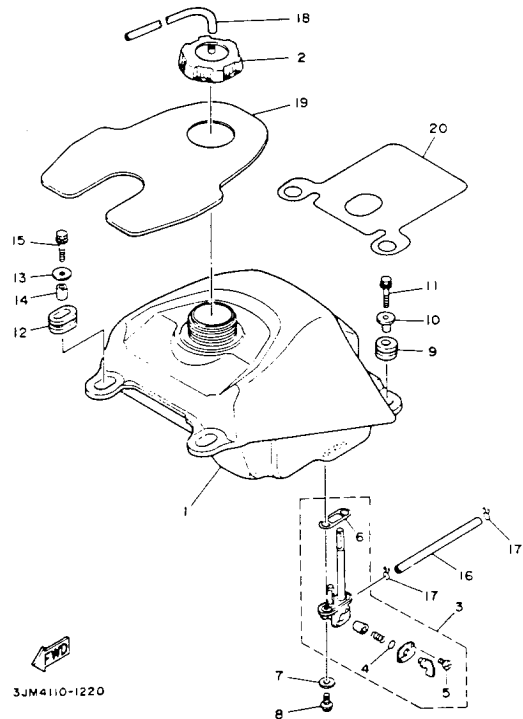
Ref. No.	Part Number	Description	Qty	Remarks
30	95816-08014-00	BOLT, flange (95806-08014-00)	4	



OIL TANK

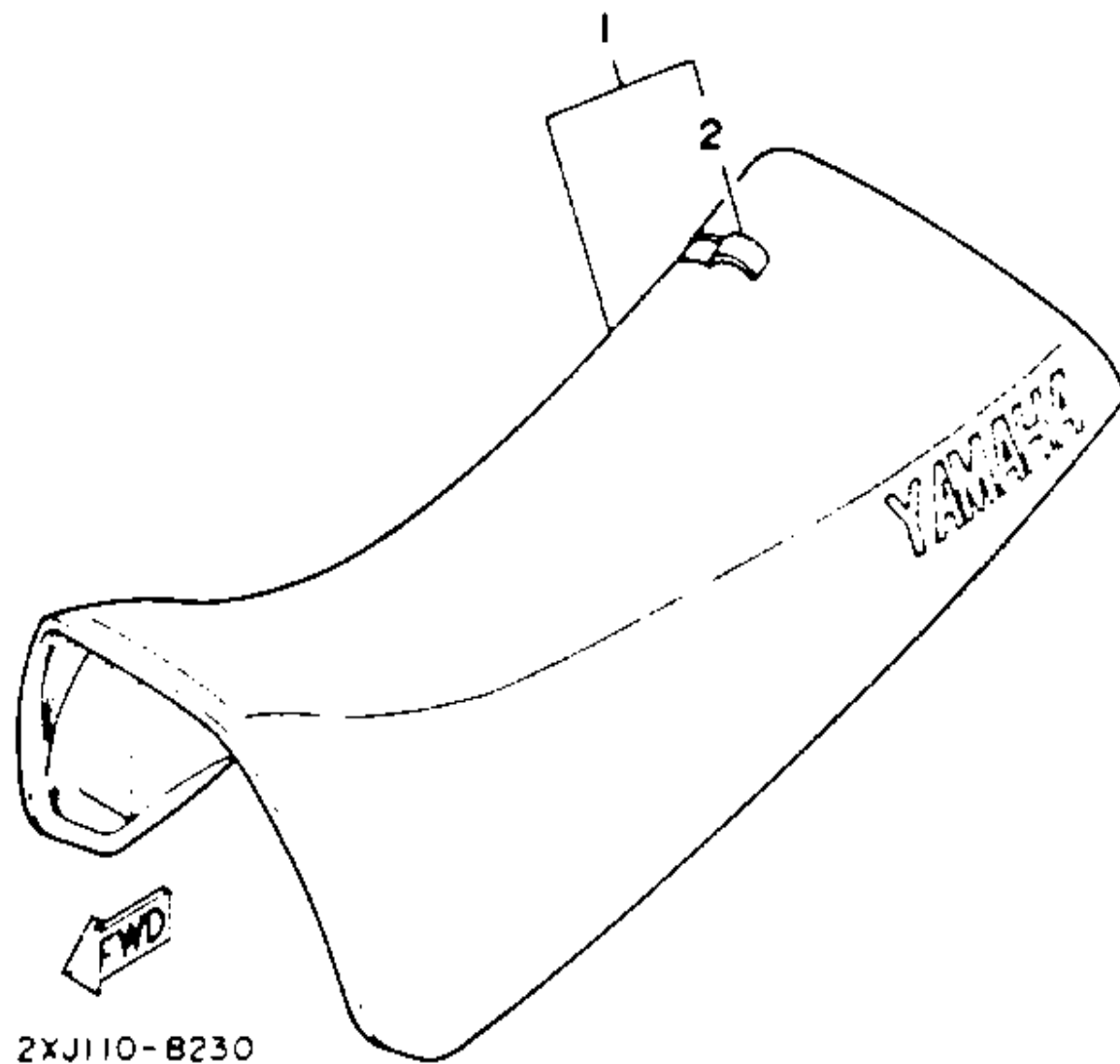


Ref. No.	Part Number	Description	Qty	Remarks
1	2XJ-21751-01-00	TANK, OIL	1	
2	2N3-21771-01-00	BODY, CAP	1	
3	2XJ-21746-00-00	DAMPER	1	
4	90480-48493-00	GROMMET	1	
5	90480-13238-00	GROMMET	2	
6	90387-07391-00	COLLAR	2	
7	95816-06025-00	BOLT, FLANGE	1	
8	90445-096F4-00	HOSE	1	
9	90467-08003-00	CLIP	2	
10	2XJ-2172W-00-00	COVER	1	
11	95816-06025-00	BOLT, FLANGE	1	
12	95816-06025-00	BOLT, FLANGE	1	



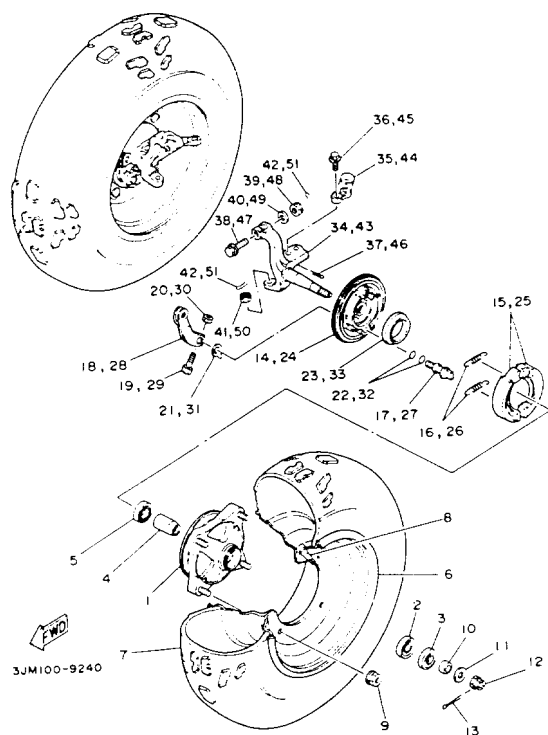
FUEL TANK

Ref. No.	Part Number	Description	Qty	Remarks
1	2XJ-24110-00-00	FUEL TANK COMP.	1	
2	1UY-24610-00-00	CAP ASSEMBLY	1	
3	36R-24500-01-00	FUEL COCK ASSEMBLY 1 ...	1	
4	4X8-24534-00-00	. SEAL, COCK	1	
5	98580-03008-00	. SCREW, PAN HEAD	2	
6	4X8-24512-00-00	. O-RING	1	
7	90202-05187-00	WASHER, PLATE	2	
8	90149-06011-00	SCREW	2	
9	90480-18290-00	GROMMET	2	
10	90387-066H4-00	COLLAR	2	
11	90119-06073-00	BOLT, WITH WASHER	2	
12	90480-01400-00	GROMMET	2	
13	90201-060L5-00	WASHER, PLATE	2	
14	90387-07598-00	COLLAR	2	
15	90119-06073-00	BOLT, WITH WASHER	2	
16	90445-100E9-00	HOSE	1	
17	90467-09006-00	CLIP	2	
18	90445-09111-00	HOSE	1	
19	2XJ-2414H-01-00	DAMPER, PLATE 1	1	
20	3JM-2414J-00-00	DAMPER, PLATE 2	1	



SEAT

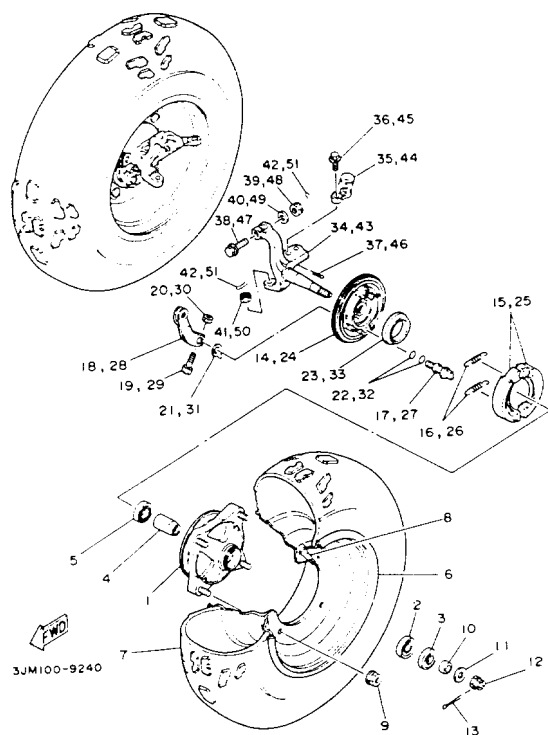
Ref. No.	Part Number	Description	Qty	Remarks
1	2XJ-24710-90-00	SINGLE SEAT ASSEMBLY ...	1	DEEP VIOLET SOLID 1
2	2XJ-24731-90-00	. COVER, SEAT	1	DEEP VIOLET SOLID 1



FRONT WHEEL

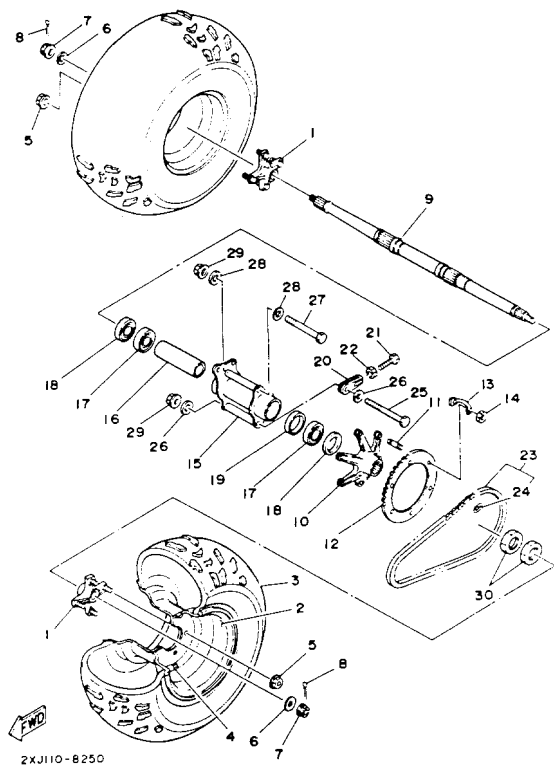
Ref. No.	Part Number	Description	Qty	Remarks
1	2XJ-25111-00-00	HUB, FRONT	2	
2	93306-20209-00	BEARING (B6202)	2	
3	93102-22216-00	OIL SEAL	2	
4	1UY-25117-00-00	SPACER, BEARING	2	
5	93306-90403-00	BEARING	2	
6	2XJ-25180-00-UJ	FRONT WHEEL COMP.	2	RADICAL WHITE
7	94107-106W0-00	TIRE (AT21X7-10**KT894A T/L)	2	DUNLOP
8	93900-00030-00	VALVE, RIM	2	
9	95701-10500-00	NUT, FLANGE (95702-10500) ..	8	
10	90387-150R1-00	COLLAR	2	
11	90201-14586-00	WASHER, PLATE	2	
12	90171-14020-00	NUT, CASTLE	2	
13	91401-30030-00	PIN, COTTER	2	
14	2XJ-25121-00-00	PLATE, BRAKE SHOE	1	
15	5H0-W2536-00-00	BRAKESHOE SET-2PCS	1	
16	90506-15260-00	SPRING, TENSION	2	
17	5G3-25351-02-00	CAMSHAFT	1	
18	52H-25155-00-00	LEVER, CAMSHAFT 1	1	
19	90101-06278-00	BOLT	1	
20	95380-06600-00	NUT	1	
21	52H-2513A-00-00	PLATE, INDICATOR	1	
22	93210-12790-00	O-RING	2	
23	93105-49023-00	OIL SEAL	1	
24	2XJ-25169-00-00	PLATE, BRAKE SHOE 2	1	
25	5H0-W2536-00-00	BRAKESHOE SET-2PCS	1	
26	90506-15260-00	SPRING, TENSION	2	
27	5G3-25351-02-00	CAMSHAFT	1	
28	52H-25156-00-00	LEVER, CAMSHAFT 2	1	
29	90101-06278-00	BOLT	1	

CONTINUED ON NEXT FRAME ➤



FRONT WHEEL

Ref. No.	Part Number	Description	Qty	Remarks
30	95380-06600-00	NUT	1	
31	52H-2513A-00-00	PLATE, INDICATOR	1	
32	93210-12790-00	O-RING	2	
33	93105-49023-00	OIL SEAL	1	
34	3JM-23511-00-00	KNUCKLE, STEERING 1	1	
35	2XJ-23512-00-00	ARM, KNUCKLE 1 (LEFT)	1	
36	90105-10507-00	BOLT, WASHER BASED	2	
37	91490-20020-00	PIN, COTTER	2	
38	90105-10549-00	BOLT, WASHER BASED	1	
39	95332-10600-00	NUT	1	
40	90201-100F7-00	WASHER, PLATE	1	
41	90171-10046-00	NUT, CASTLE	1	
42	91490-20020-00	PIN, COTTER	2	
43	3JM-23521-00-00	KNUCKLE, STEERING 2	1	
44	2XJ-23522-00-00	ARM, KNUCKLE 2 (RIGHT) ...	1	
45	90105-10507-00	BOLT, WASHER BASED	2	
46	91490-20020-00	PIN, COTTER	2	
47	90105-10549-00	BOLT, WASHER BASED	1	
48	95332-10600-00	NUT	1	
49	90201-100F7-00	WASHER, PLATE	1	
50	90171-10046-00	NUT, CASTLE	1	
51	91490-20020-00	PIN, COTTER	2	

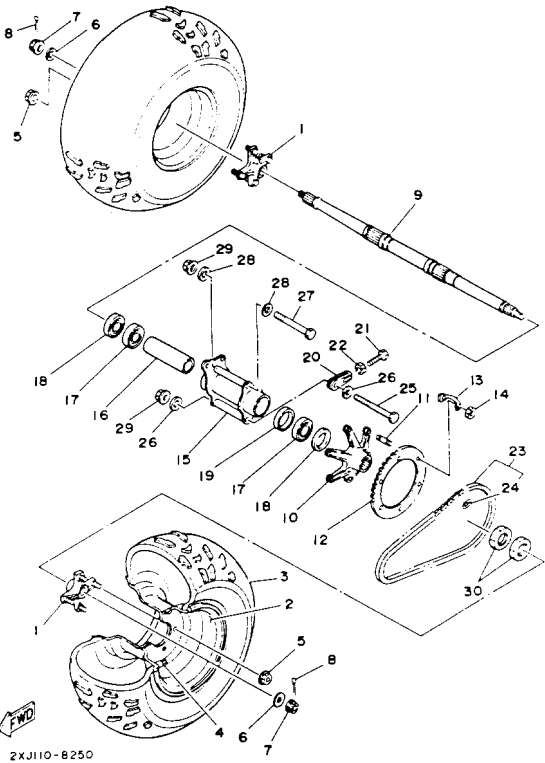


2XJ110-8250

REAR WHEEL

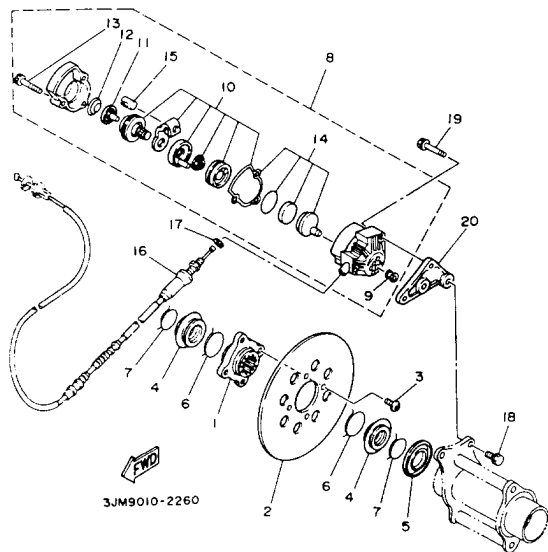
Ref. No.	Part Number	Description	Qty	Remarks
1	2XJ-25383-00-00	COLLAR, WHEEL	2	
2	2VY-25390-00-UJ	REAR WHEEL COMP.	2	RADICAL WHITE
3	94110-085W9-00	TIRE (AT21X10-8*KT895A T/L N) ...	2	DUNLOP
4	93900-00030-00	VALVE, RIM	2	
5	95701-10500-00	NUT, FLANGE (95702-10500) ..	8	
6	90201-140A6-00	WASHER, PLATE	2	
7	90171-14037-00	NUT, CASTLE	2	
8	91401-30030-00	PIN, COTTER	2	
9	2XJ-25381-00-00	AXLE, WHEEL	1	
10	2XJ-25386-00-00	COLLAR, SPROCKET AXLE ..	1	
11	90116-08507-00	BOLT, STUD	6	
12	2XJ-25440-20-00	SPROCKET, DRIVEN (40T) ...	1	
13	2XJ-25412-00-00	WASHER	3	
14	90170-08258-00	NUT	6	
15	2XJ-25311-00-35	HUB, REAR	1	SILVER
16	2XJ-25317-00-00	SPACER, BEARING	1	
17	93306-00705-00	BEARING	2	
18	93106-42026-00	OIL SEAL	2	
19	90387-561U7-00	COLLAR	1	
20	2XJ-25388-00-00	PULLER, CHAIN 1	2	
21	90101-08615-00	BOLT	2	
22	95333-08600-00	NUT, HEXAGON	2	
23	94581-08092-00	CHAIN	1	
24	94681-08011-00	. JOINT, CHAIN (D.I.D 520V6-FJ)	1	
25	90101-10678-00	BOLT	1	
26	90201-106F2-00	WASHER, PLATE	2	
27	90101-10678-00	BOLT	1	
28	90201-106F2-00	WASHER, PLATE	2	

CONTINUED ON NEXT FRAME ➤



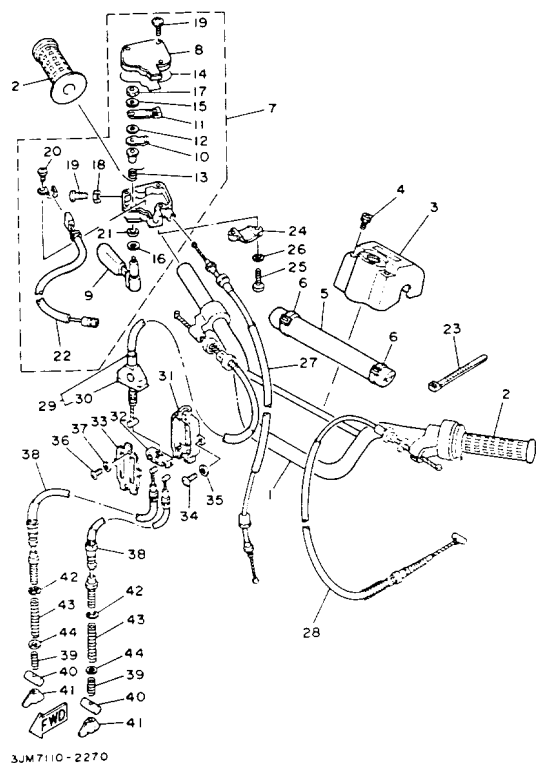
REAR WHEEL

Ref. No.	Part Number	Description	Qty	Remarks
29	95701-10500-00	NUT, FLANGE (95702-10500) ..	2	
30	90170-33376-00	NUT	2	



REAR BRAKE CALIPER

Ref. No.	Part Number	Description	Qty	Remarks
1	2XJ-25712-00-00	BRACKET, DISC	1	
2	2XJ-25831-50-00	DISC, BRAKE	1	
3	90109-081F0-00	BOLT	4	
4	2XJ-25715-00-00	COVER 1	2	
5	2XJ-25367-00-00	COVER, HUB DUST	1	
6	93440-44158-00	CIRCLIP	2	
7	93440-36159-00	CIRCLIP	2	
8	2XJ-25810-50-00	CALIPER ASSEMBLY	1	
9	2XJ-25916-00-00	. PLUG	1	
10	2XJ-25726-01-00	. BRAKE LEVER SET	1	
11	2XJ-25771-00-00	. RATCHET, ADJUSTING	1	
12	2XJ-25772-00-00	. SPRING, RATCHET FIX	1	
13	2XJ-25818-00-00	. BOLT, CALIPER	3	
14	2XJ-25811-00-00	. PAD, CALIPER 2	1	
15	2XJ-25734-00-00	. PIN 1	1	
16	2XJ-26351-00-00	CABLE, BRAKE	1	
17	90201-080L7-00	WASHER, PLATE	1	
18	90105-08520-00	BOLT, WASHER BASED	2	
19	90105-08521-00	BOLT, WASHER BASED	2	
20	2XJ-25721-00-00	BRACKET, CALIPER	1	

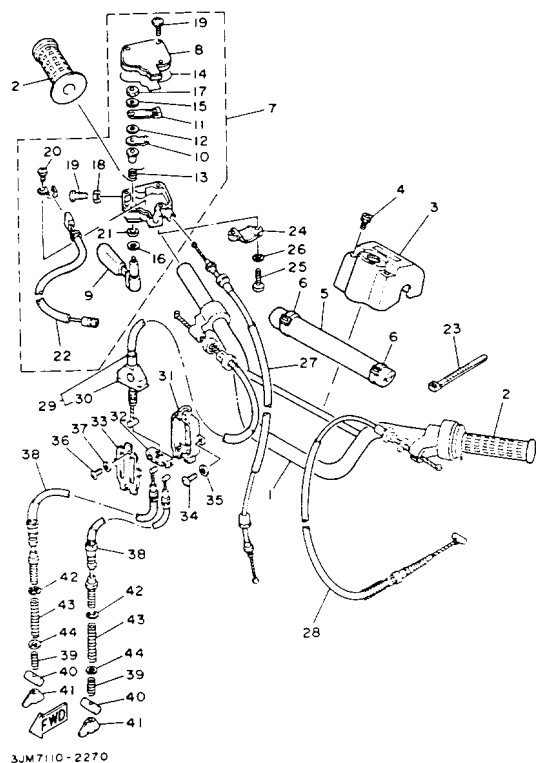


3JM7110-2270

HANDLEBAR - CABLE

Ref. No.	Part Number	Description	Qty	Remarks
1	2GU-26111-00-00	HANDLEBAR	1	
2	3GB-26241-00-00	GRIP (LEFT)	2	
3	2GU-26124-00-00	PROTECTOR, HANDLEBAR ..	1	
4	90159-06093-00	SCREW, WITH WASHER	2	
5	3GD-2622K-00-00	PROTECTOR 1	1	
6	437-83936-01-00	BAND, SWITCH CORD	2	
7	2GU-26250-01-00	THROTTLE LEVER ASSEMBLY	1	
8	2GU-2628F-00-00	. CAP, GEAR	1	
9	2GU-2625G-01-00	. LEVER, THROTTLE	1	
10	2GU-2625H-00-00	. ARM, THROTTLE	1	
11	2GU-2625J-00-00	. ARM, THROTTLE 2	1	
12	2GU-26259-00-00	. COLLAR	1	
13	2GU-26314-00-00	. SPRING	1	
14	2GU-2628G-00-00	. GASKET	1	
15	2GU-26398-00-00	. WASHER	1	
16	1NV-26129-00-00	. WASHER	1	
17	95612-05100-00	. NUT, U	1	
18	95316-05700-00	. NUT	1	
19	98506-05020-00	. SCREW, PAN HEAD	4	
20	98902-03006-00	. SCREW, BIND	1	
21	93104-09025-00	. OIL SEAL	1	
22	2GU-82567-00-00	. SWITCH, THROTTLE	1	
23	437-83936-01-00	BAND, SWITCH CORD	2	
24	4V4-82913-00-00	HOLDER, LEVER LOWER 1 ...	1	
25	98506-05020-00	SCREW, PAN HEAD	2	
26	92906-05100-00	WASHER, SPRING	2	
27	2XJ-26311-00-00	CABLE, THROTTLE 1	1	
28	2XJ-26335-00-00	CABLE, CLUTCH	1	
29	2XJ-26373-00-00	CABLE, BRAKE 4	1	

CONTINUED ON NEXT FRAME ➤

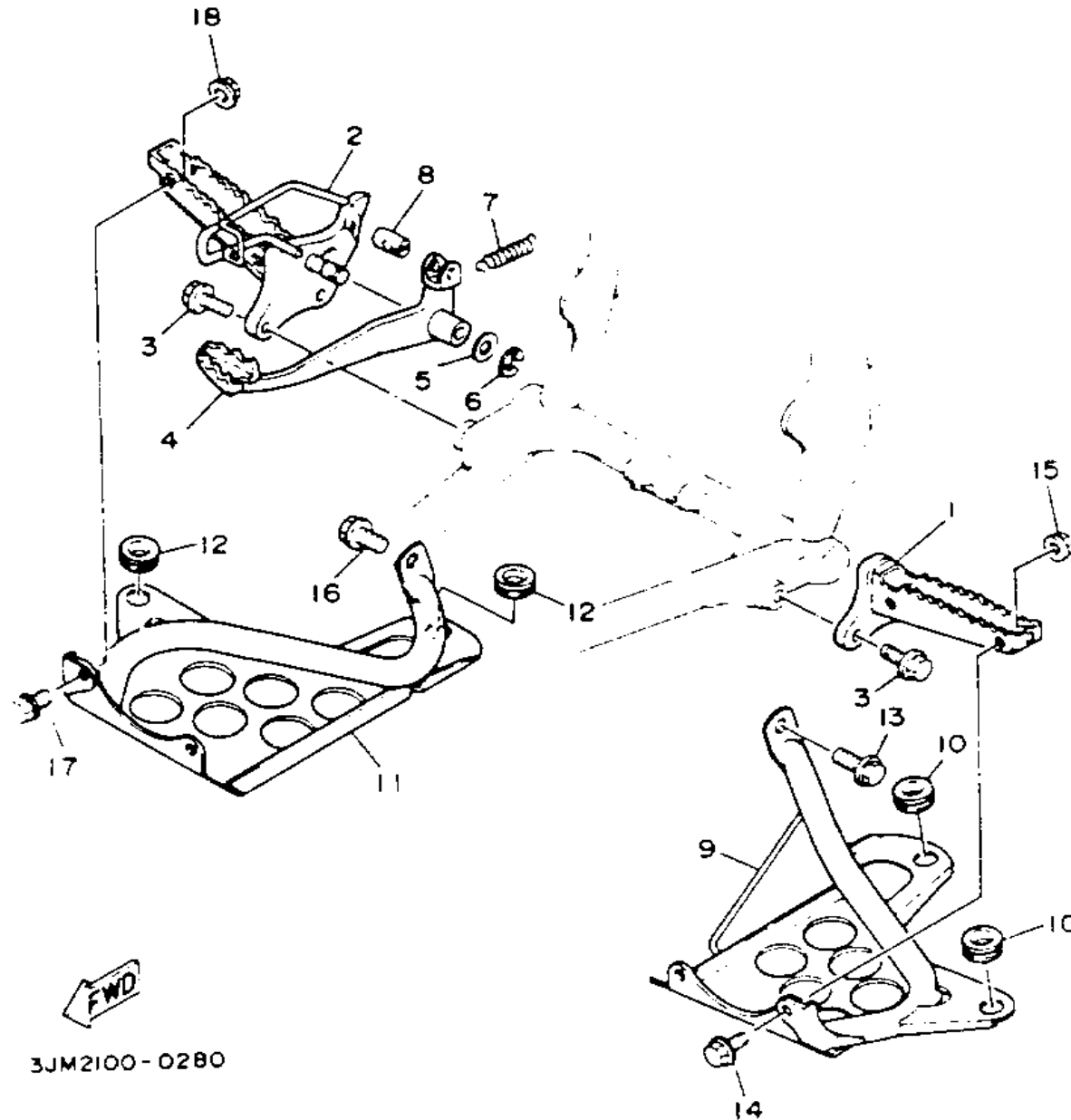


3JM7110-2270

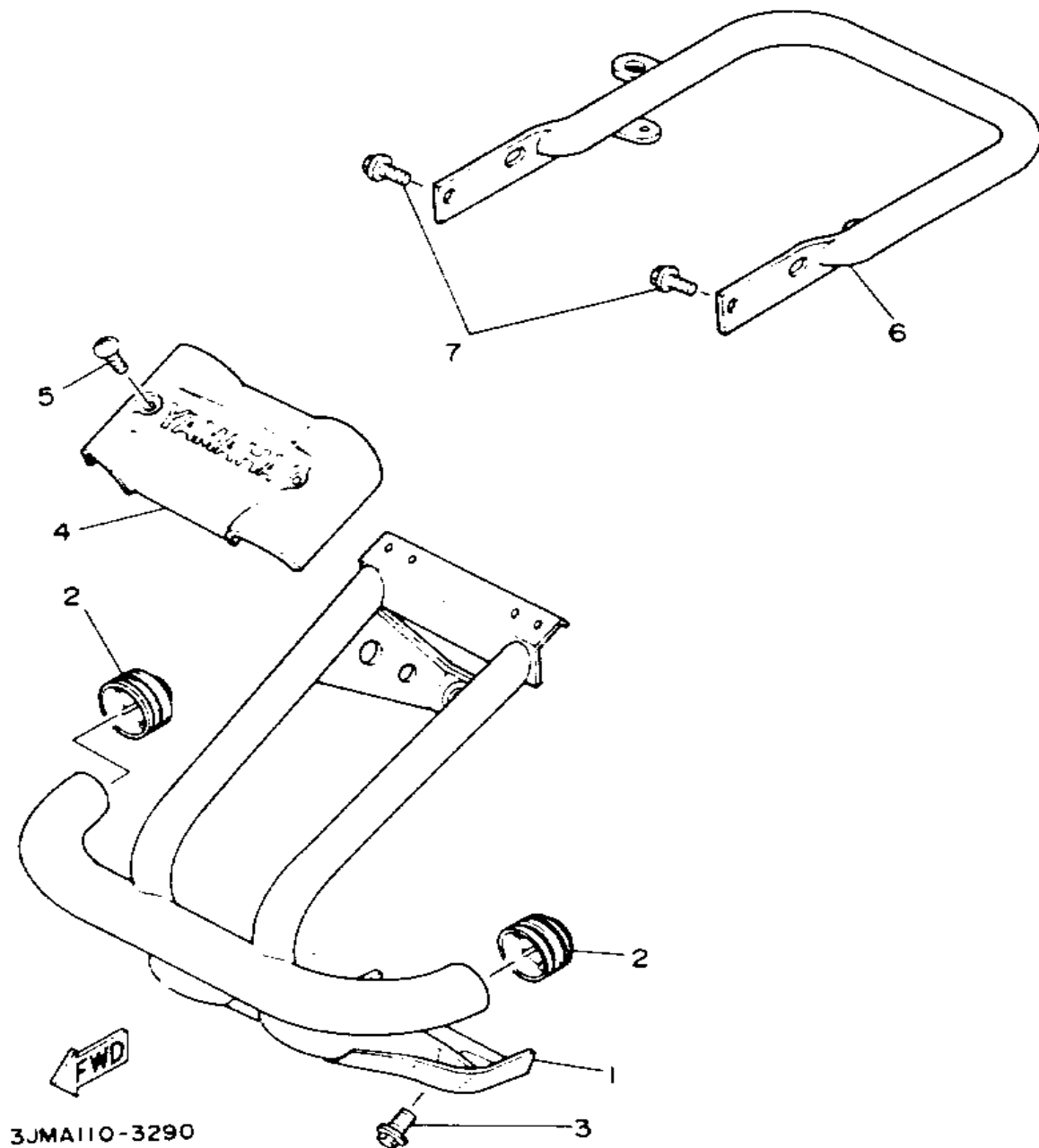
HANDLEBAR - CABLE

Ref. No.	Part Number	Description	Qty	Remarks
30	52H-26362-00-00	. BOOT	1	
31	52H-26371-00-00	HOUSING, BRAKE LINK	1	
32	52H-26347-01-00	JOINT, CABLE	1	
33	52H-2631G-00-00	PLATE	1	
34	98580-05016-00	SCREW, PAN HEAD (98501-05016)	2	
35	92901-05600-00	WASHER, PLATE	2	
36	98580-03008-00	SCREW, PAN HEAD	2	
37	92902-03600-00	WASHER	2	
38	2XJ-26361-00-00	CABLE, BRAKE	2	
39	90501-10782-00	SPRING, COMPRESSION	2	
40	90249-12008-00	PIN	2	
41	90175-06019-00	NUT, WING	2	
42	99009-06600-00	CIRCLIP	2	
43	90501-123A0-00	SPRING, COMPRESSION	2	
44	90209-06265-00	WASHER	2	

STAND - FOOTREST

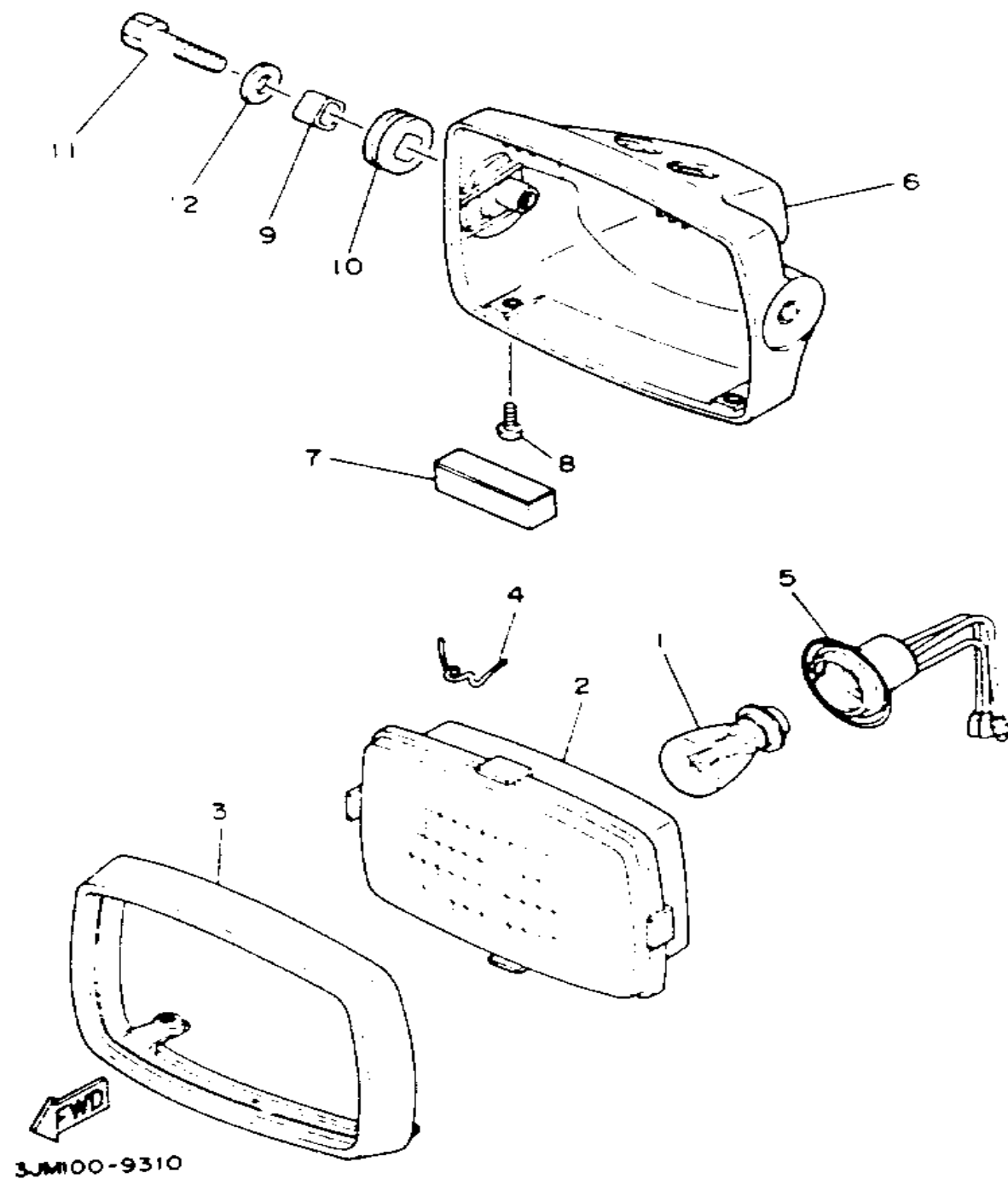


Ref. No.	Part Number	Description	Qty	Remarks
1	3JM-27411-00-00	FOOTREST 1	1	
2	3JM-27421-00-00	FOOTREST 2	1	
3	95811-10025-00	BOLT, FLANGE	4	
4	3JM-27211-10-00	PEDAL BRAKE	1	
5	90201-15797-00	WASHER, PLATE	1	
6	93430-12008-00	CIRCLIP	1	
7	90506-20193-00	SPRING, TENSION	1	
8	90249-14202-00	PIN	1	
9	3JM-27445-00-00	PLATE 1	1	
10	90480-18411-00	GROMMET	2	
11	3JM-27446-00-00	PLATE 2	1	
12	90480-18411-00	GROMMET	2	
13	95811-08016-00	BOLT, FLANGE	1	
14	92011-08016-00	SCREW (1FK)	2	
15	95701-08500-00	NUT, FLANGE	2	
16	95811-08016-00	BOLT, FLANGE	1	
17	92011-08016-00	SCREW (1FK)	2	
18	95701-08500-00	NUT, FLANGE	2	



GUARD

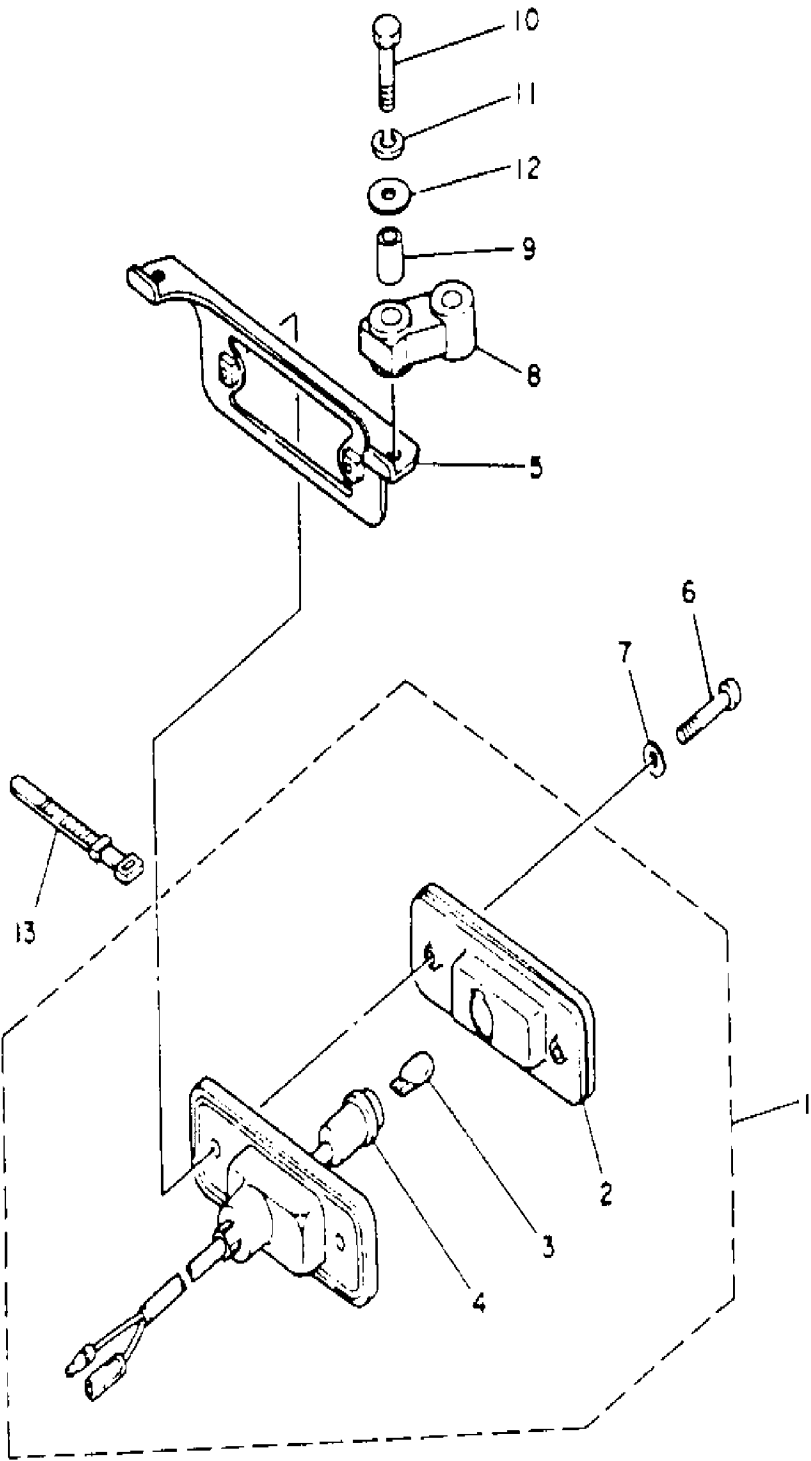
Ref. No.	Part Number	Description	Qty	Remarks
1	3JM-2845N-10-00	BAR, CARRY FRONT	1	
2	2HR-28415-00-00	DAMPER 1	2	
3	95811-08016-00	BOLT, FLANGE	3	
4	2XJ-2842M-00-00	COVER 1	1	
5	90154-05059-00	SCREW, BINDING	2	
6	3JM-2845R-30-00	BAR, CARRY REAR	1	
7	95811-08016-00	BOLT, FLANGE	3	



HEADLIGHT

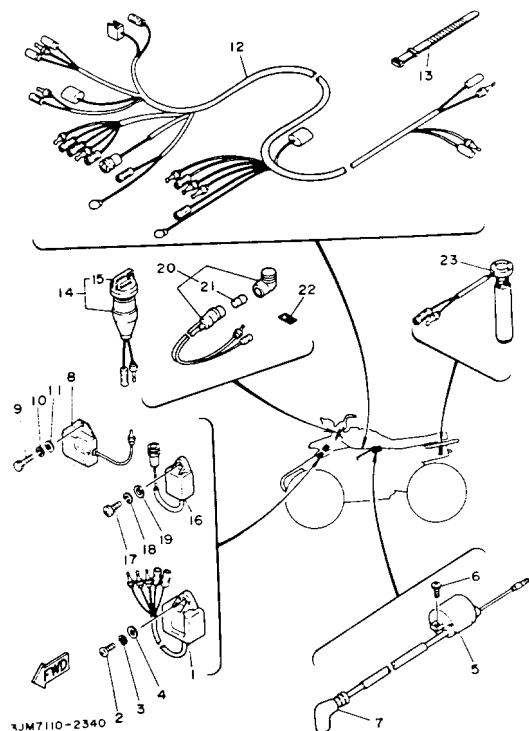
Ref. No.	Part Number	Description	Qty	Remarks
1	21V-84314-00-00	BULB, HEAD LIGHT (12V-45/45W)	1	
2	52H-84320-00-00	LENS ASSEMBLY	1	
3	52H-84315-00-00	RIM, HEADLIGHT	1	
4	52H-84324-00-00	SPRING, REFLECTOR	4	
5	52H-84340-00-00	SOCKET CORD ASSEMBLY 1 .	1	
6	2XJ-84330-00-00	BODY ASSEMBLY	1	
7	5X4-14462-00-00	DAMPER, HEADLIGHT (2XJ-84345-00-00)	1	
8	98580-05012-00	SCREW, PAN HEAD	2	
9	52H-84338-00-00	COLLAR, BODY FITTING	2	
10	52H-84345-00-00	DAMPER, HEADLIGHT	2	
11	97011-08030-00	BOLT (97001-08030-00)	2	
12	90201-08753-00	WASHER, PLATE	2	

TAILLIGHT



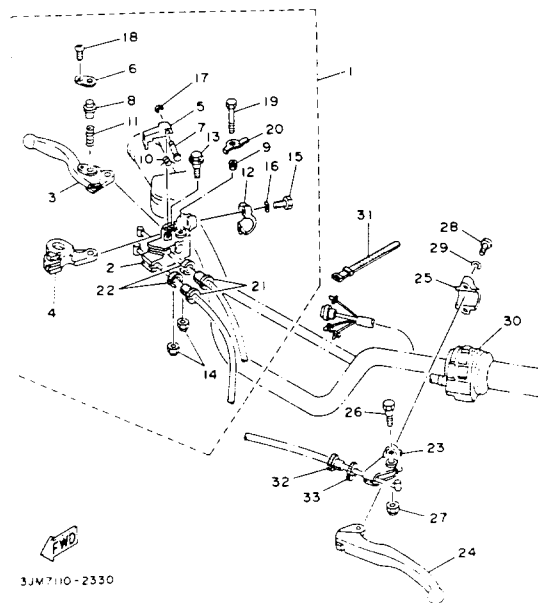
Ref. No.	Part Number	Description	Qty	Remarks
1	38W-84710-00-00	TAILLIGHT UNIT ASSEMBLY ..	1	
2	38W-84721-00-00	. LENS, TAILLIGHT	1	
3	3F9-84744-00-XX	. BULB, METER 12V3.8W	1	
4	38W-84710-00-00	. TAILLIGHT UNIT ASSEMBLY .	1	
5	1UY-84702-00-00	BRACKET, TAILLIGHT	1	
6	98511-04020-00	SCREW, PAN HEAD	2	
7	92901-04600-00	WASHER, PLATE	2	
8	38W-84736-00-00	DAMPER, TAIL 1	2	
9	90387-06553-00	COLLAR	4	
10	97011-06025-00	BOLT (97001-06025)	4	
11	92906-06100-00	WASHER, SPRING	4	
12	90201-06059-00	WASHER, PLATE	4	
13	437-83936-01-00	BAND, SWITCH CORD	1	

FWD
2xJ110-8320



ELETRICAL 1

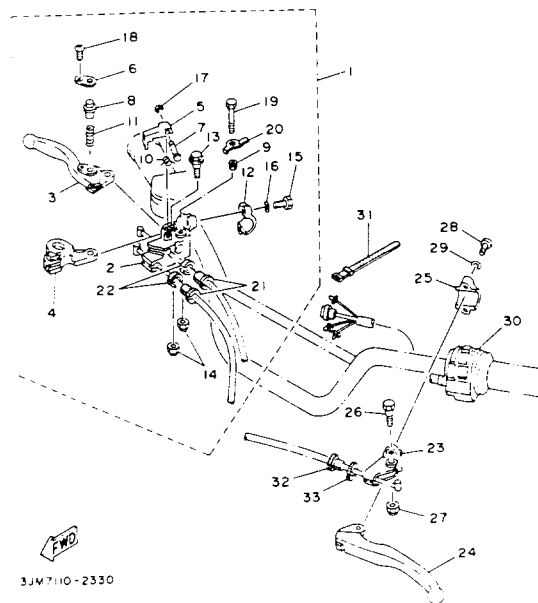
Ref. No.	Part Number	Description	Qty	Remarks
1	3FL-85540-00-00	C.D.I. UNIT ASSEMBLY	1	
2	98580-06020-00	SCREW	1	
3	92995-06100-00	WASHER, SPRING	1	
4	92901-06600-00	WASHER	1	
5	5M0-82310-M0-00	IGNITION COIL ASSEMBLY ...	1	
6	98502-06016-00	SCREW, PAN HEAD (98501-06014-00)	2	
7	81E-82370-20-00	PLUG CAP ASSEMBLY	1	W/NOISE SUPPRESSOR
8	82F-81910-A0-00	VOLTAGE REGULATOR ASSEMBLY	1	
9	98580-06020-00	SCREW	2	
10	92995-06100-00	WASHER, SPRING	2	
11	92901-06600-00	WASHER	2	
12	2XJ-82590-00-00	WIRE HARNESS ASSEMBLY ..	1	
13	437-83936-11-00	BAND, SWITCH CORD	3	
14	2XJ-82510-01-00	MAIN SWITCH ASSEMBLY ...	1	
15	3HN-82579-00-00	. CAP, KEY	1	
16	2GU-85590-M0-00	CONTROL UNIT ASSEMBLY ..	1	
17	98580-06020-00	SCREW	1	
18	92995-06100-00	WASHER, SPRING	1	
19	92901-06600-00	WASHER	1	
20	2XJ-83530-00-00	PILOT LIGHT ASSEMBLY	1	
21	2XJ-83516-00-00	. BULB (12V-3.4W)	1	
22	4U3-83585-00-00	LABEL	1	
23	2XJ-85720-01-00	OIL LEVEL GAUGE ASSEMBLY	1	



HANDLE SWITCH - LEVER

Ref. No.	Part Number	Description	Qty	Remarks
1	3JM-82920-01-00	LEVER HOLDER ASSEMBLY R (RIGHT)	1	
2	3GH-82921-01-00	. HOLDER, LEVER 2	1	
3	3GH-83922-00-00	. LEVER 2	1	
4	3GH-83912-00-00	. LEVER 1	1	
5	3JM-83965-00-00	. LEVER, LOCK	1	
6	1UY-83935-00-00	. COVER	1	
7	3FA-83967-00-00	. PIN, LOCK 1	1	
8	1UY-83967-00-00	. PIN, LOCK 1	1	
9	1UY-83913-00-00	. COLLAR, LEVER 1	1	
10	3GH-83966-00-00	. SPRING, RETURN	1	
11	1UY-83962-00-00	. SPRING	1	
12	2XJ-82913-00-00	. HOLDER, LEVER LOWER 1 ..	1	
13	90109-06797-00	. BOLT	1	
14	95601-06100-00	. NUT, U	2	
15	97026-06022-00	. BOLT	2	
16	92906-06100-00	. WASHER, SPRING	2	
17	3FA-26466-00-00	. RING, SNAP	1	
18	98506-03008-00	. SCREW, PAN HEAD (90157-03122-00)	1	
19	95816-06040-00	. BOLT	1	
20	3JM-8331L-10-00	. PLATE, STOPPER	1	
21	90123-08046-00	. BOLT	2	
22	90179-08148-00	. NUT	2	
23	38V-82911-00-00	HOLDER, LEVER 1	1	
24	1NV-83912-00-00	LEVER 1	1	
25	38V-82913-00-00	HOLDER, LEVER LOWER 1 ...	1	
26	90109-06799-00	BOLT	1	
27	95601-06100-00	NUT, U	1	

CONTINUED ON NEXT FRAME ➤



HANDLE SWITCH - LEVER

Ref. No.	Part Number	Description	Qty	Remarks
28	98506-05018-00	SCREW, PAN HEAD	2	
29	92906-05100-00	WASHER, SPRING	2	
30	2XJ-83975-01-00	SWITCH, HANDLE 2	1	
31	437-83936-01-00	BAND, SWITCH CORD	2	
32	90123-08046-00	BOLT	1	
33	90179-08148-00	NUT	1	