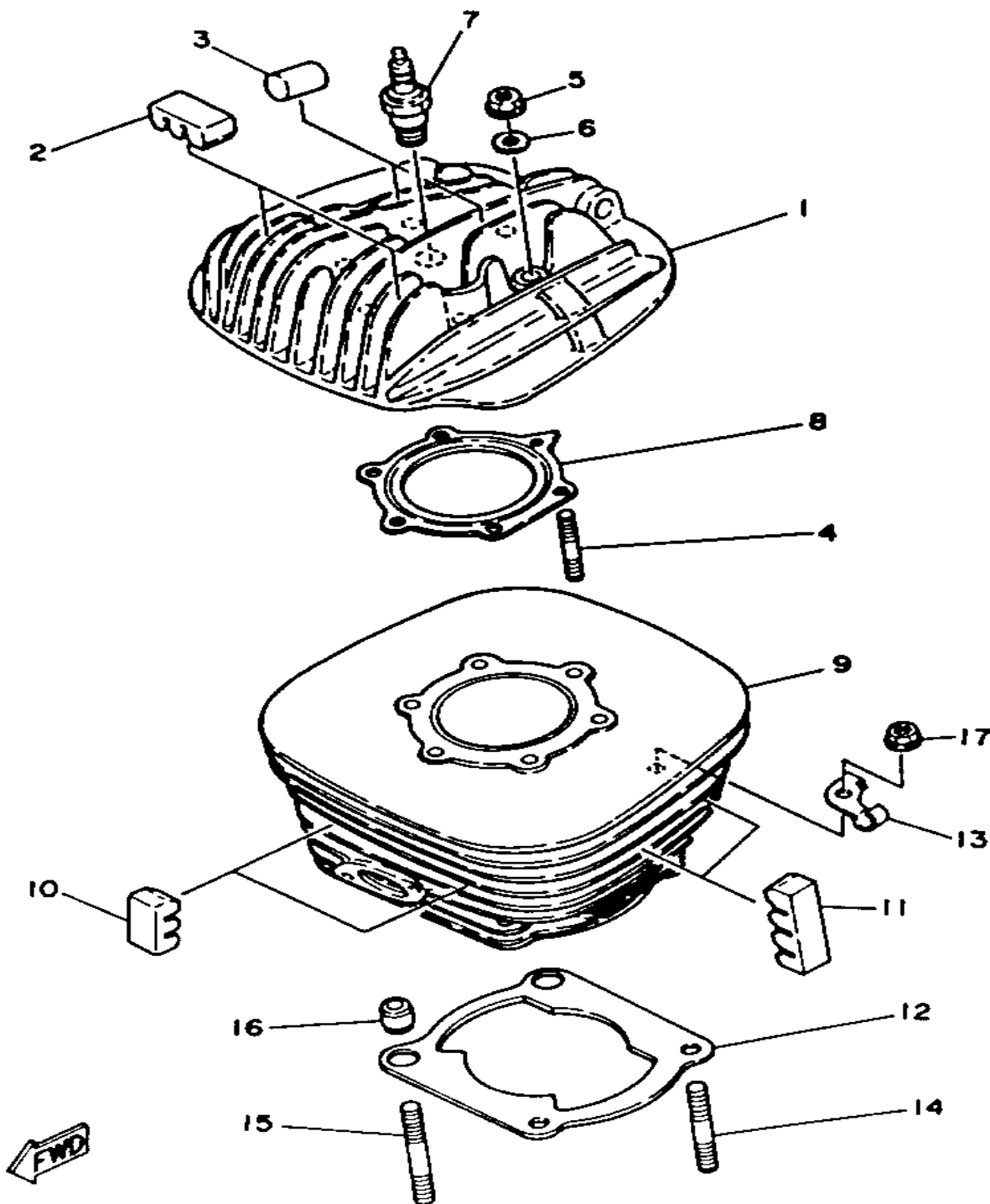


# **YAMAHA**

# **GENUINE**

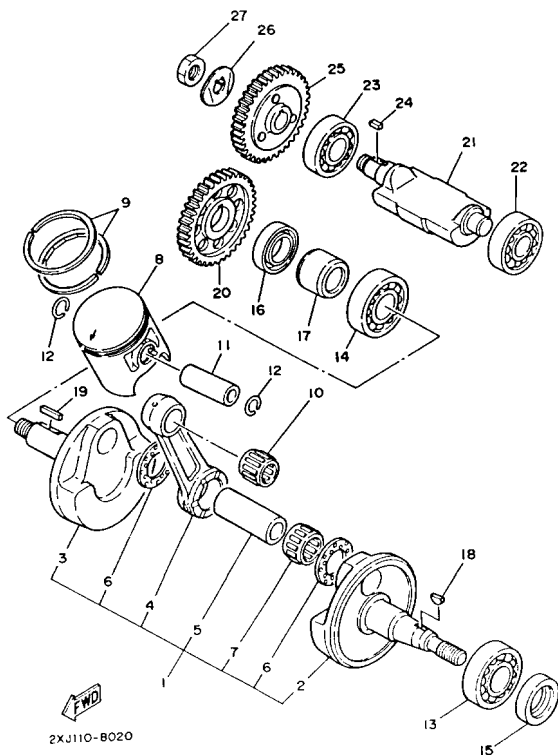
## **PARTS CATALOGUE**

## **ALL TERRAIN VEHICLE**



## CYLINDER

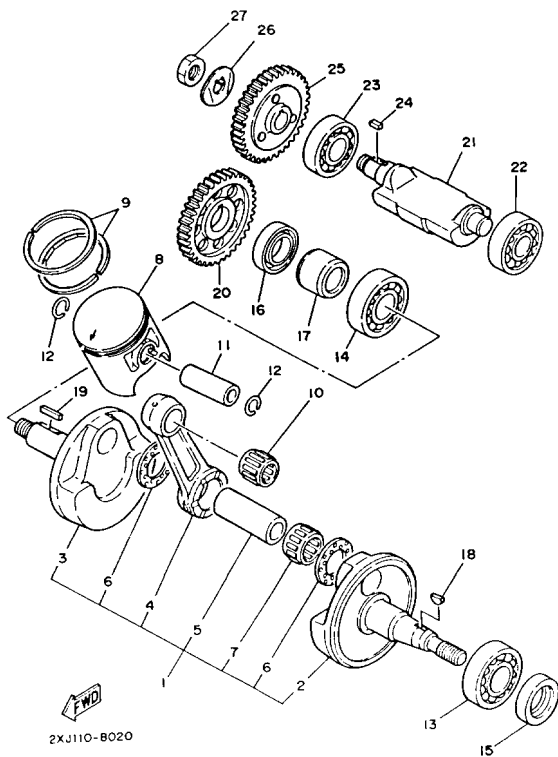
Ref. No.	Part Number	Description	Qty	Remarks
1	2XJ-11111-00-00	HEAD, CYLINDER 1 .....	1	
2	3R9-11162-00-00	ABSORBER 2 .....	2	
3	576-11127-00-00	ABSORBER 3 .....	2	
4	90116-08394-00	BOLT, STUD .....	6	
5	95333-08600-00	NUT, HEXAGON .....	6	
6	90201-08649-00	WASHER, PLATE .....	6	
7	NGK-B8ES0-00-00	PLUG, SPARK (NGK B8ES) ...	1	
8	2XJ-11181-00-00	GASKET, CYLINDER HEAD 1 .	1	
9	2XJ-11311-01-00	CYLINDER 1 .....	1	
10	3R9-11162-00-00	ABSORBER 2 .....	2	
11	3R6-11162-00-00	ABSORBER 2 .....	4	
12	3JM-11351-00-00	GASKET, CYLINDER .....	1	
13	10V-1131E-00-00	HOLDER 1 .....	1	
14	90116-08318-00	BOLT, STUD .....	2	
15	90116-08388-00	BOLT, STUD .....	2	
16	99510-10114-00	PIN, DOWEL .....	2	
17	90179-08491-00	NUT, FLANGE .....	4	



# CRANKSHAFT - PISTON

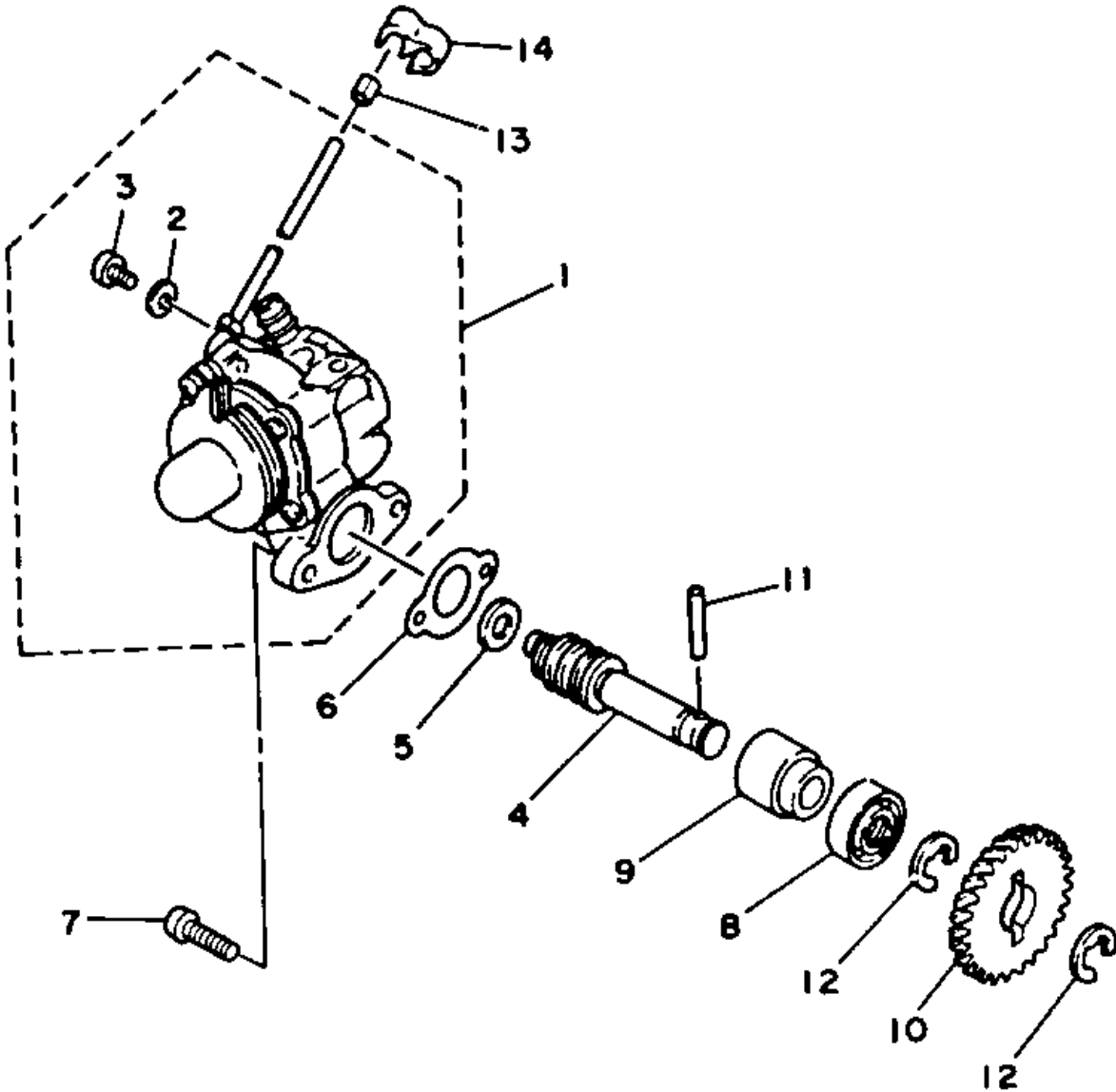
Ref. No.	Part Number	Description	Qty	Remarks
1	37F-11400-00-00	CRANKSHAFT ASSEMBLY . . .	1	
2	37F-11412-00-00	. CRANK 1 . . . . .	1	
3	37F-11422-00-00	. CRANK 2 . . . . .	1	
4	43G-11651-00-00	. ROD, CONNECTING . . . . .	1	
5	37F-11681-00-00	. PIN, CRANK 1 . . . . .	1	
6	90209-22248-00	. WASHER . . . . .	2	
7	93310-522L4-00	. BEARING . . . . .	1	
8	2XJ-11631-01-97	PISTON (STD) . . . . .	1	
	2XJ-11635-01-00	PISTON (0.25MM O/S) . . . . .	1	AP
	2XJ-11636-01-00	PISTON (0.50MM O/S) . . . . .	1	AP
9	3JM-11601-00-00	PISTON RING SET (STD) . . . . .	1	
	3JM-11601-10-00	PISTON RING SET (0.25MM O/S) . . . . .	1	AP
	3JM-11601-20-00	PISTON RING SET (0.50MM O/S) . . . . .	1	AP
10	93310-316H6-00	BEARING . . . . .	1	
11	4L0-11633-00-00	PIN, PISTON . . . . .	1	
12	93450-17044-00	CIRCLIP . . . . .	2	
13	93306-20562-00	BEARING . . . . .	1	
14	93306-30556-00	BEARING . . . . .	1	
15	93102-25331-00	OIL SEAL . . . . .	1	
16	93103-32171-00	OIL SEAL (93103-32099-00 ) . .	1	
17	90387-206K3-00	COLLAR . . . . .	1	
18	90280-03017-00	KEY, WOODRUFF . . . . .	1	
19	90282-05047-00	KEY, STRAIGHT . . . . .	1	
20	10V-11536-01-00	GEAR, DRIVE . . . . .	1	
21	37F-11454-00-00	WEIGHT 1 . . . . .	1	
22	93306-20211-00	BEARING (6202SH2-C3) . . . . .	1	
23	93306-20335-00	BEARING . . . . .	1	

CONTINUED ON NEXT FRAME ➤



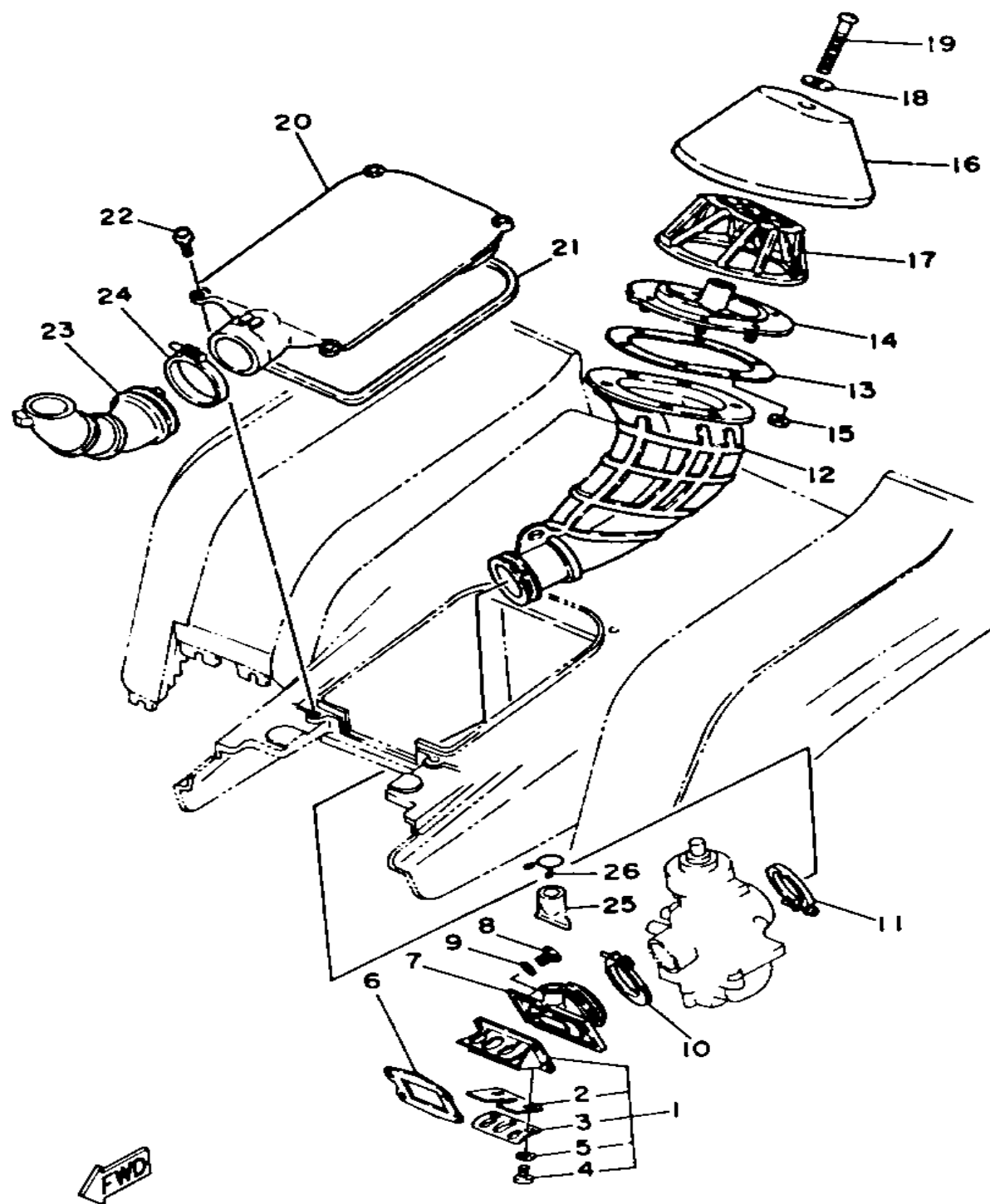
# CRANKSHAFT - PISTON

Ref. No.	Part Number	Description	Qty	Remarks
24	90282-05013-00	KEY, STRAIGHT .....	1	
25	37F-11530-00-00	BALANCER WEIGHT GEAR COMP. ....	1	
26	90215-12272-00	WASHER, LOCK .....	1	
27	90170-12337-00	NUT .....	1	



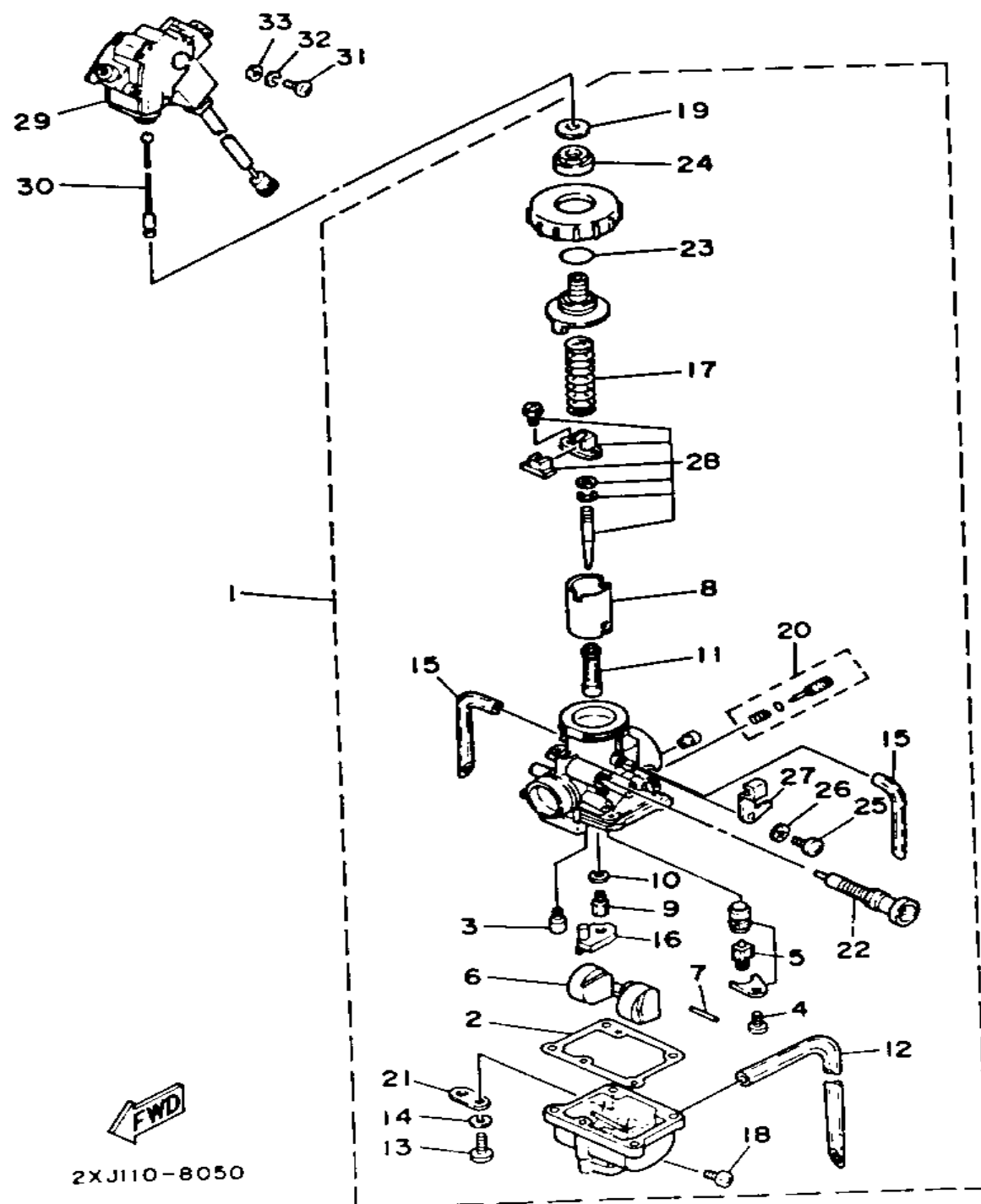
# OIL PUMP

Ref. No.	Part Number	Description	Qty	Remarks
1	2XJ-13101-00-00	OIL PUMP ASSEMBLY .....	1	
2	90430-04004-00	. GASKET .....	1	
3	98901-04008-00	. SCREW, BIND .....	1	
4	10V-13175-00-00	SHAFT, WORM .....	1	
5	90201-08624-00	WASHER, PLATE .....	1	
6	3MT-13116-00-00	GASKET, PUMP CASE (8Y0-13116-00) .....	1	
7	98501-05016-00	SCREW, PAN HEAD .....	2	
8	93101-10090-00	OIL SEAL .....	1	
9	1E7-13176-00-00	METAL, WRM SHAF OTR ....	1	
10	10V-13178-01-00	GEAR, PUMP DRIVE .....	1	
11	93603-22028-00	PIN, DOWEL .....	1	
12	93430-08036-00	CIRCLIP .....	2	
13	90468-02033-00	CLIP .....	1	
14	90468-15020-00	CLIP .....	1	



## AIR FILTER

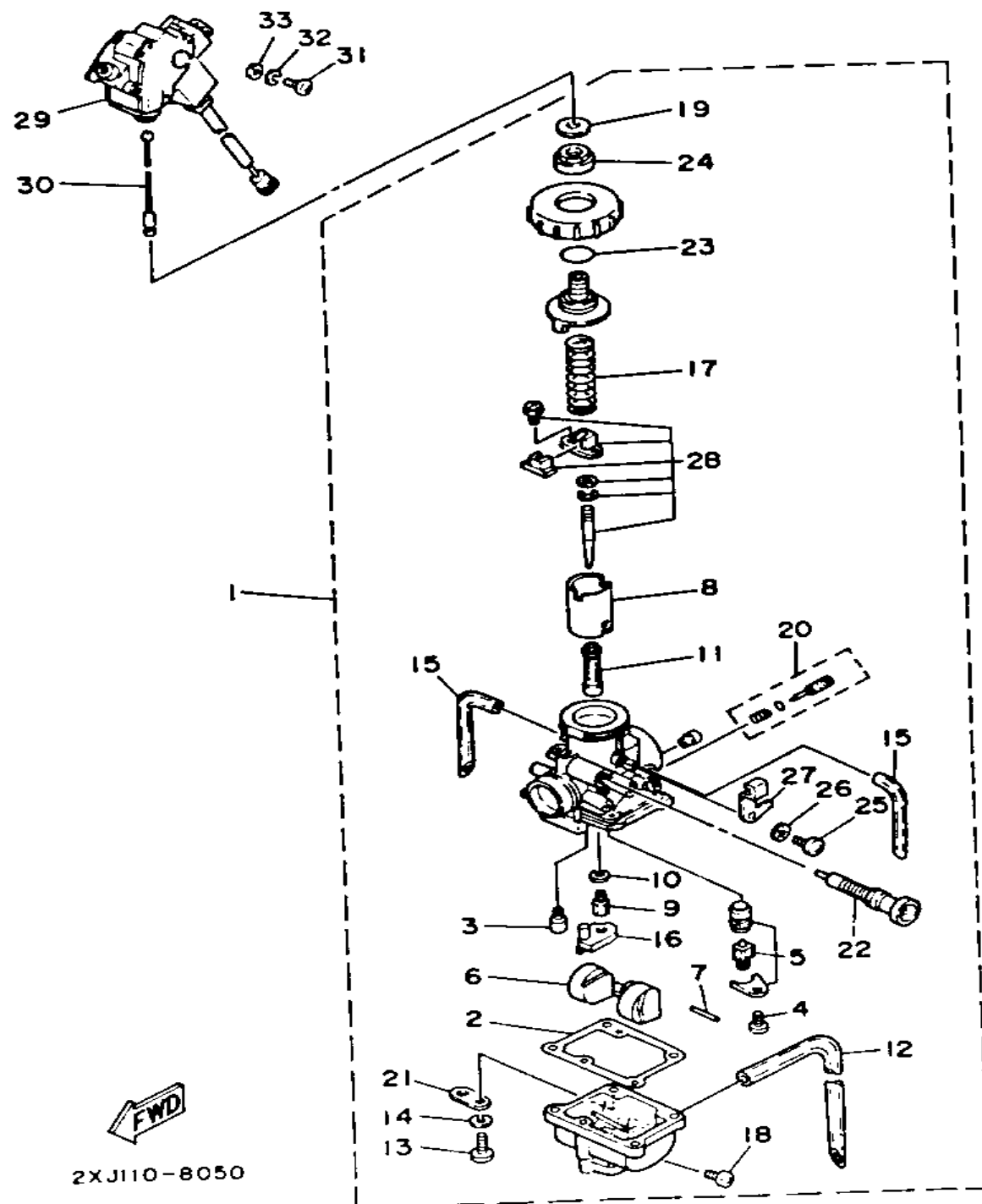
Ref. No.	Part Number	Description	Qty	Remarks
1	2HF-13610-01-00	REED VALVE ASSEMBLY	1	
2	2HF-13613-00-00	. REED, VALVE	2	
3	58T-13616-01-00	. STOPPER, REED VALVE	2	
4	98580-03008-00	. SCREW, PAN HEAD	4	
5	92990-03100-00	. WASHER, SPRING (92901-03100)	4	
6	3JM-13621-00-00	GASKET, VALVE SEAT	1	
7	2XJ-13565-00-00	JOINT, CARBURETOR	1	
8	97011-06025-00	BOLT (97001-06025)	4	
9	92906-06600-00	WASHER	4	
10	90450-44046-00	HOSE CLAMP ASSEMBLY	1	
11	90460-49058-00	CLAMP, HOSE	1	
12	2XJ-14453-00-00	JOINT, AIR CLEANER 1	1	
13	2XJ-14477-00-00	PLATE	1	
14	2XJ-14459-00-00	HOLDER, GUIDE	1	
15	95601-05100-00	NUT, U	6	
16	2XJ-14451-00-00	ELEMENT, AIR CLEANER	1	
17	2XJ-14458-00-00	GUIDE	1	
18	90209-06096-00	WASHER	1	
19	98501-06060-00	SCREW, PAN HEAD	1	
20	2XJ-14412-01-00	CAP, CLEANER CASE 1	1	
21	36F-14452-00-00	SEAL	1	
22	90159-06085-00	SCREW, WITH WASHER	4	
23	2XJ-14437-00-00	DUCT	1	
24	90460-56105-00	CLAMP, HOSE	1	
25	59V-14457-00-00	SEAL	1	
26	90467-22080-00	CLIP	1	



# CARBURETOR

Ref. No.	Part Number	Description	Qty	Remarks
1	2XJ-14101-01-00	CARBURETOR ASSEMBLY 1	1	
2	304-14184-00-00	. GASKET, FLOAT CHAMBER	1	
3	260-14142-32-00	. JET, PILOT (# 32.5)	1	
4	98580-04008-00	. SCREW, PAN HEAD	1	
5	2MA-14107-28-00	. NEEDLE VALVE SET	1	
6	4L0-14185-00-00	. FLOAT	1	
7	537-14186-00-00	. PIN, FLOAT	1	
8	2XJ-14112-20-00	. VALVE, THROTTLE 1	1	
9	137-14143-46-A1	. JET, MAIN (#230)	1	
10	137-14153-00-00	. WASHER, MAIN JET	1	
11	4L0-14141-46-00	. NOZZLE, MAIN	1	
12	90445-08376-00	. HOSE	1	
13	98511-04016-00	. SCREW, PAN HEAD	4	
14	92990-04100-00	. WASHER, SPRING	4	
15	4L0-14197-00-00	. PIPE	2	
16	2GU-14153-00-00	. RING	1	
17	248-14131-00-00	. SPRING, THROTTLE VALVE	1	
18	12R-14191-00-00	. PLUG, DRAIN	1	
19	2GU-14952-00-00	. WASHER	1	
20	10W-14104-00-00	. AIR SCREW SET	1	
21	500-14146-00-00	. PLATE	1	
22	2GU-14171-00-00	. PLUNGER, STARTER	1	
23	558-14147-00-00	. O-RING	1	
24	2GU-14161-00-00	. NUT, CABLE ADJUSTING	1	
25	98501-05010-00	. SCREW, PAN HEAD	1	
26	92990-05100-00	. WASHER, SPRING	1	
27	2GU-14243-00-00	. PLATE	1	
28	2XJ-1490J-00-00	. NEEDLE SET	1	
29	2XJ-8259E-01-00	SWITCH ASSEMBLY	1	

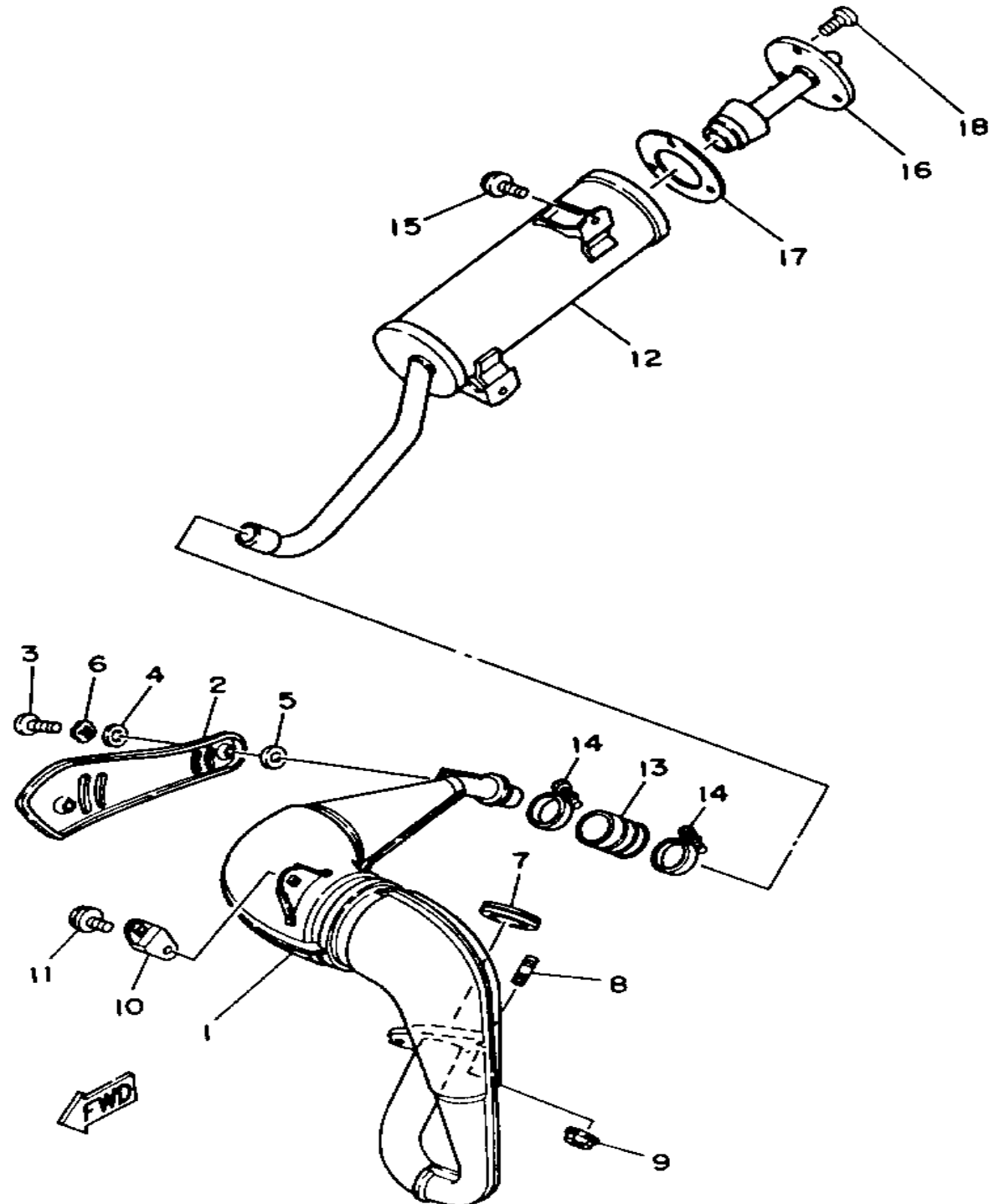
CONTINUED ON NEXT FRAME ►



# CARBURETOR

Ref. No.	Part Number	Description	Qty	Remarks
30	2GU-2633K-00-00	WIRE, INNER 1 .....	1	
31	98580-03010-00	SCREW, PAN HEAD (98502-03010) .....	3	
32	92990-03100-00	WASHER, SPRING (92901-03100) .....	3	
33	92902-03600-00	WASHER .....	3	

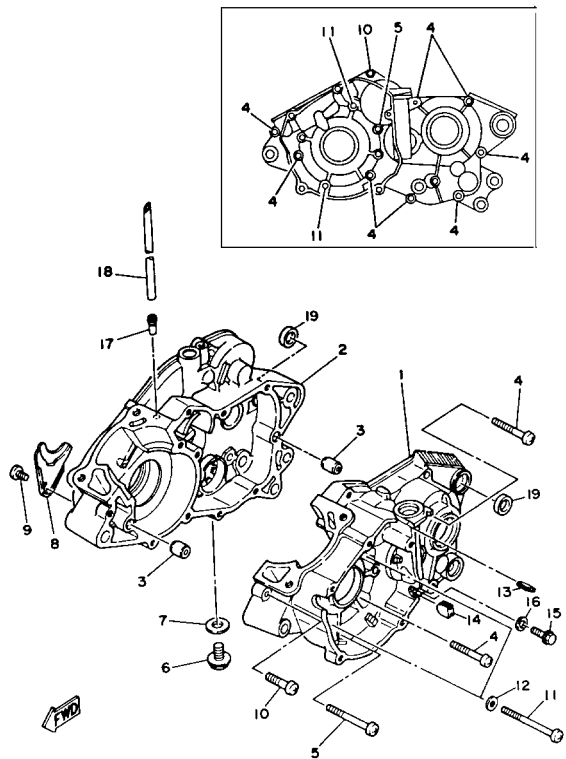




# EXHAUST

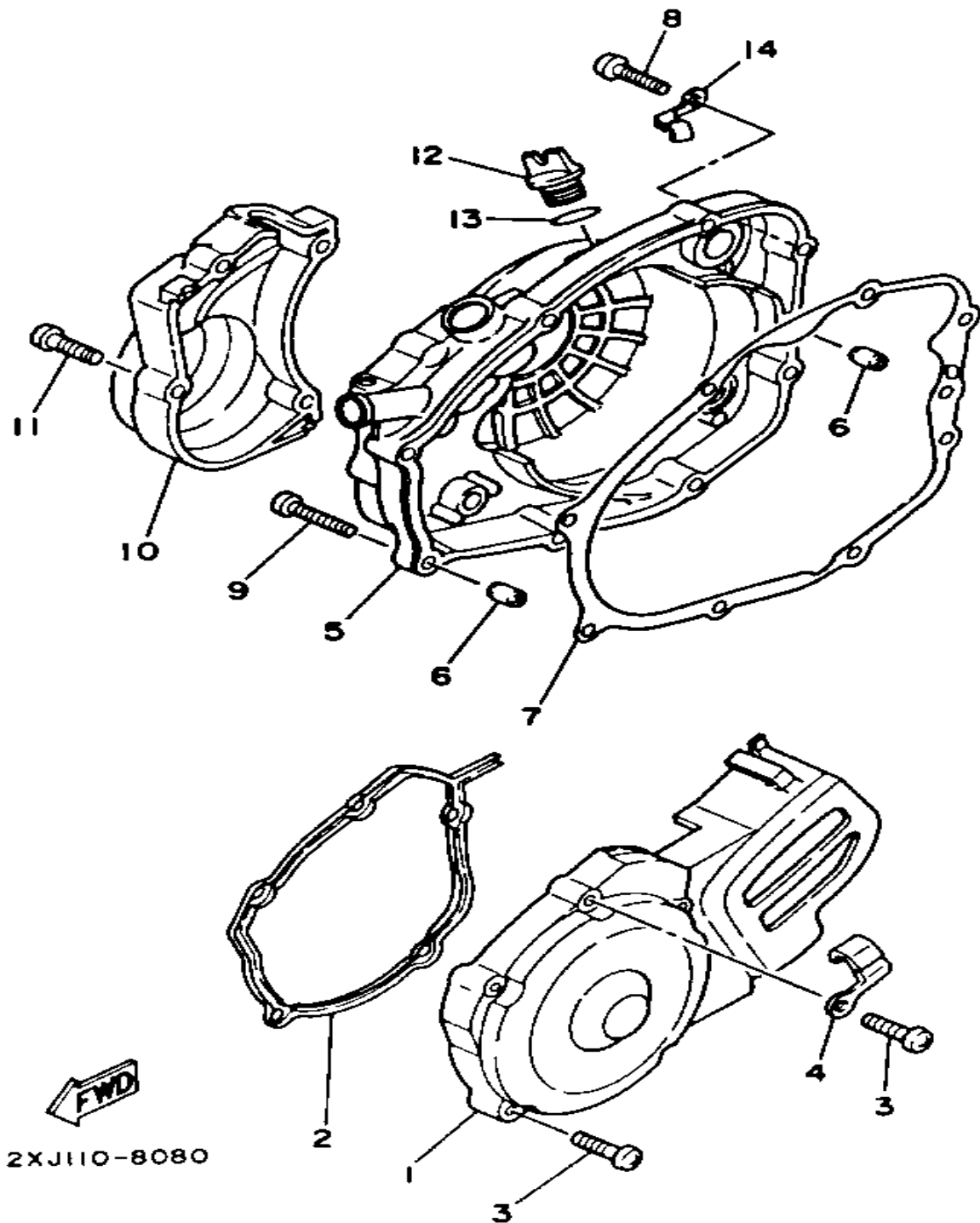
Ref. No.	Part Number	Description	Qty	Remarks
1	2XJ-14610-00-00	EXHAUST PIPE ASSEMBLY 1 .	1	
2	2XJ-14718-00-00	PROTECTOR, MUFFLER 1 ....	1	
3	98906-06010-00	SCREW, BIND .....	2	
4	90202-05187-00	WASHER, PLATE .....	2	
5	30X-14766-00-00	WASHER, PROTECTOR .....	2	
6	90206-06090-00	WASHER, WAVE .....	2	
7	3PA-14613-10-00	GASKET, EXHAUST PIPE ....	1	
8	90116-08042-00	BOLT, STUD .....	2	
9	90179-08270-00	NUT .....	2	
10	565-14771-00-00	STAY, MUFFLER 1 .....	1	
11	95816-06012-00	BOLT, FLANGE .....	2	
12	2XJ-14753-00-00	SILENCER, EXHAUST .....	1	
13	1W2-14714-00-00	GASKET, MUFFLER .....	1	
14	90450-37022-00	HOSE CLAMP ASSEMBLY ...	2	
15	95811-08016-00	BOLT, FLANGE .....	2	
16	2XJ-14752-00-00	PIPE, OUTLET .....	1	
17	2XJ-14755-10-00	GASKET, SILENCER .....	1	
18	98906-06010-00	SCREW, BIND .....	3	

# CRANKCASE

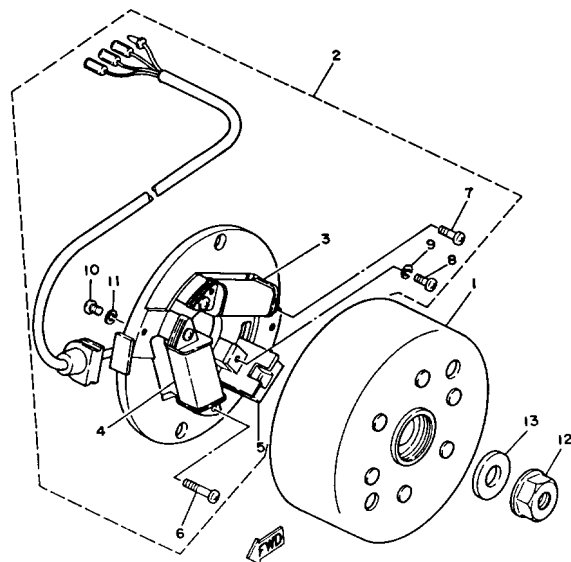


Ref. No.	Part Number	Description	Qty	Remarks
1	2XJ-15111-01-00	CRANKCASE 1 .....	1	
2	2XJ-15121-00-00	CRANKCASE 2 .....	1	
3	99510-12016-00	PIN, DOWEL .....	2	
4	98503-06045-00	SCREW (92503-06045-00) ....	8	
5	98501-06060-00	SCREW, PAN HEAD .....	1	
6	90340-12097-00	PLUG, STRAIGHT SCREW ....	1	
7	90201-12172-00	WASHER, PLATE .....	1	
8	37F-15128-00-00	HOLDER .....	1	
9	92501-08010-00	SCREW, PAN HEAD .....	1	
10	98580-06030-00	SCREW PAN HEAD .....	1	
11	98501-06075-00	SCREW, PAN HEAD .....	2	
12	92901-06600-00	WASHER .....	2	
13	90480-01209-00	GROMMET .....	1	
14	90338-09206-00	PLUG .....	1	
15	90105-10147-00	BOLT, WASHER BASED ....	1	
16	90430-10171-00	GASKET .....	1	
17	137-13115-00-00	CONNECTOR, SUCTION PIPE .	1	
18	90446-09155-00	HOSE .....	1	
19	90201-166L5-00	WASHER, PLATE .....	2	

# CRANKCASE COVER 1



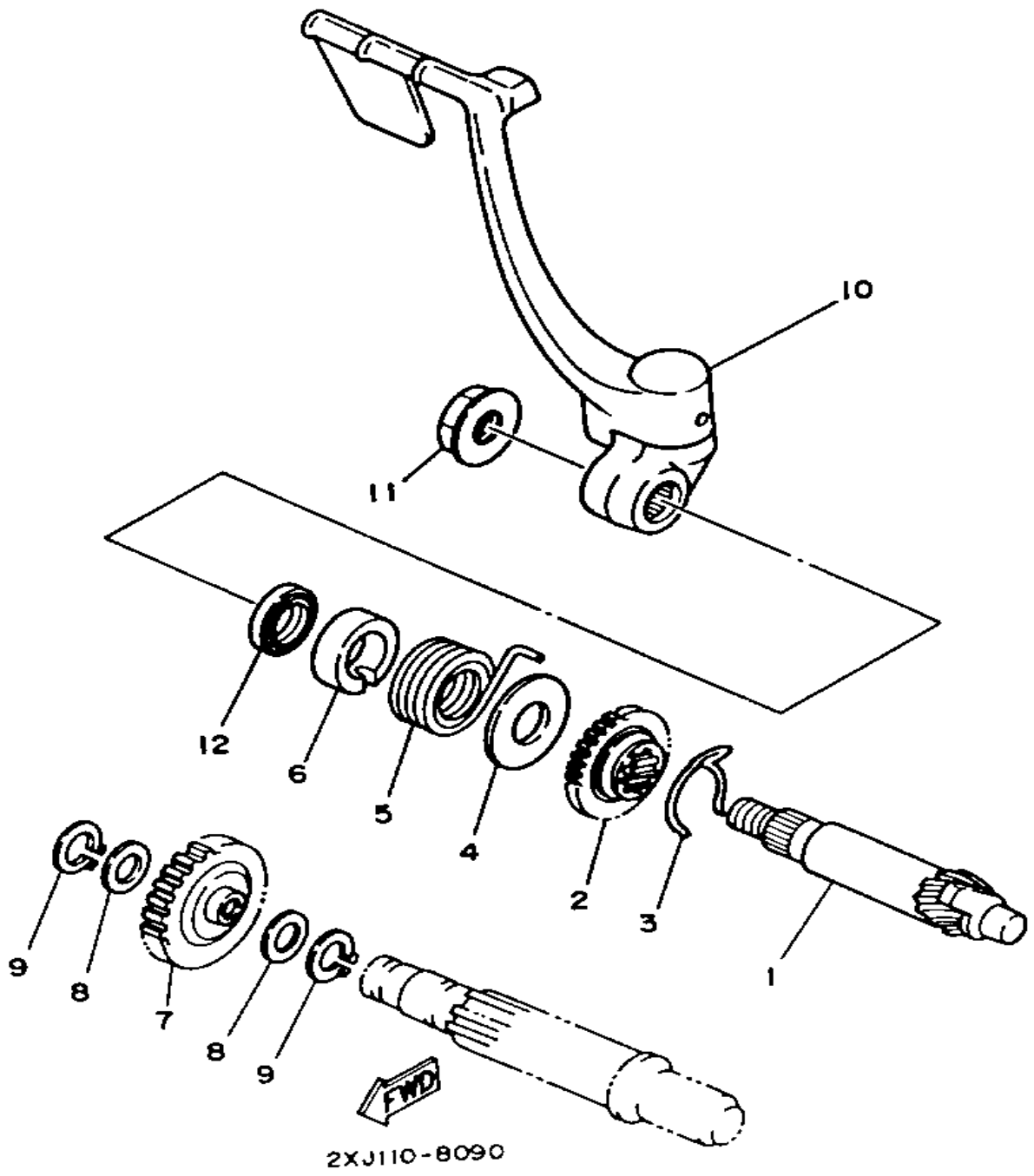
Ref. No.	Part Number	Description	Qty	Remarks
1	2XJ-15411-00-00	COVER, CRANKCASE 1	1	
2	2XJ-15379-00-00	SEAL, CRANKCASE	1	
3	98516-06030-00	SCREW, PAN HEAD	5	
4	90465-10069-00	CLAMP	1	
5	2XJ-15420-00-00	CRANKCASE COVER ASSEMBLY 2	1	
6	99530-10014-00	PIN, DOWEL	2	
7	3JM-15451-00-00	GASKET, CRANKCASE COVER 1	1	
8	98516-06030-00	SCREW, PAN HEAD	7	
9	98506-06035-00	SCREW, PAN HEAD	1	
10	37F-15416-00-00	COVER, OIL PUMP	1	
11	98516-06030-00	SCREW, PAN HEAD	4	
12	1RG-15363-00-00	PLUG, OIL	1	
13	93210-19123-00	O-RING	1	
14	367-13174-00-00	HOLDER, OIL PIPE	1	



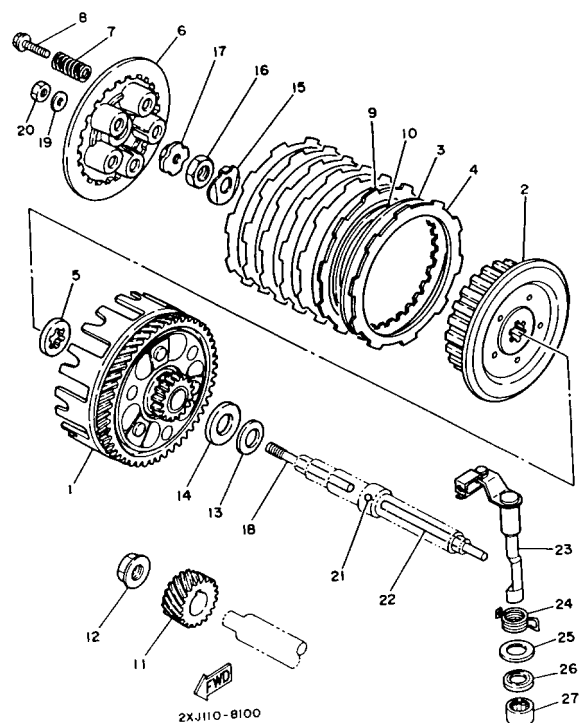
# GENERATOR

Ref. No.	Part Number	Description	Qty	Remarks
1	2XJ-85550-M0-00	ROTOR ASSEMBLY .....	1	
2	3JM-85560-00-00	BASE ASSEMBLY .....	1	
3	37A-85520-M1-00	. COIL, CHARGE .....	1	
4	2XJ-81313-M0-00	. COIL, LIGHTING 1 .....	1	
5	2AL-85580-M0-00	. COIL, PULSER .....	1	
6	98511-04020-00	. SCREW, PAN HEAD .....	2	
7	98511-04012-00	. SCREW, PAN HEAD .....	2	
8	98580-04010-00	. SCREW, PAN HEAD .....	1	
9	92901-04100-00	. WASHER, SPRING .....	1	
10	98580-04008-00	. SCREW, PAN HEAD .....	1	
11	92901-04100-00	. WASHER, SPRING .....	1	
12	90179-12421-00	NUT, SPEC'L SHAPE .....	1	
13	90201-123L6-00	WASHER, PLATE .....	1	

STARTER

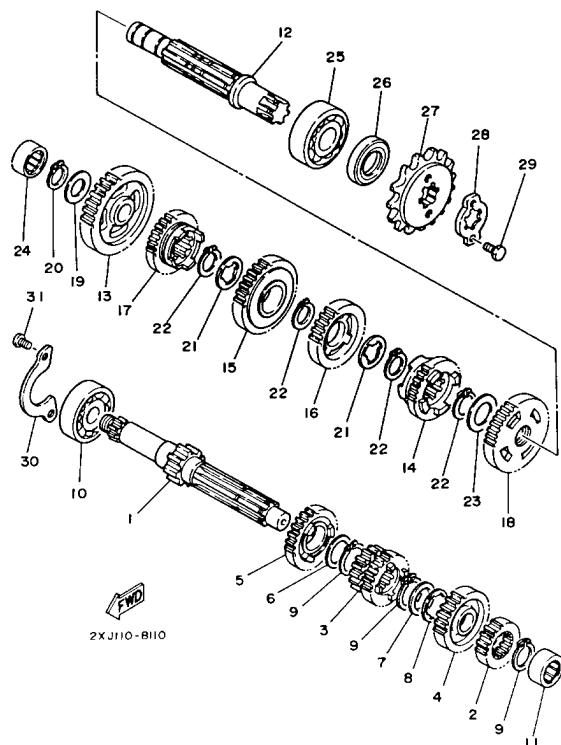


Ref. No.	Part Number	Description	Qty	Remarks
1	10V-15660-00-00	KICK AXLE ASSEMBLY .....	1	
2	10V-15641-00-00	GEAR, KICK (23T) .....	1	
3	90468-26048-00	CLIP .....	1	
4	90201-200J7-00	WASHER, PLATE .....	1	
5	90508-26667-00	SPRING, TORSION .....	1	
6	10V-15666-00-00	SPACER .....	1	
7	10V-15651-00-00	GEAR, KICK IDLE (29T) .....	1	
8	90201-154E8-00	WASHER, PLATE (1.0T) .....	2	
9	93440-15012-00	CIRCLIP .....	2	
10	2XJ-15620-10-00	KICK CRANK ASSEMBLY ....	1	
11	90179-12374-00	NUT, SPEC'L SHAPE .....	1	
12	93102-20309-00	SEAL, OIL .....	1	



# CLUTCH

Ref. No.	Part Number	Description	Qty	Remarks
1	3JM-16150-01-00	PRIMARY DRIVEN GEAR COMP. ....	1	
2	2TV-16371-00-00	BOSS, CLUTCH ....	1	
3	1V1-16324-00-00	PLATE, CLUTCH 1 ....	6	
4	21V-16321-00-00	PLATE, FRICTION ....	6	
5	2TV-16154-00-00	PLATE, THRUST 1 ....	1	
6	37F-16351-00-00	PLATE, PRESSURE 1 ....	1	
7	90501-20568-00	SPRING, COMPRESSION ....	5	
8	90119-05001-00	BOLT, WITH WASHER ....	5	
9	1HX-16331-00-00	PLATE, FRICTION 2 ....	1	
10	1HX-16383-00-00	SPRING, CLUTCH BOSS ....	1	
11	2A6-16111-00-00	GEAR, PRI DRIVE ....	1	
12	90179-12567-00	NUT ....	1	
13	90208-18046-00	WASHER, CONICAL SPRING ..	1	
14	90201-180P2-00	WASHER, PLATE ....	1	
15	90215-12271-00	WASHER, LOCK ....	1	
16	90170-12370-00	NUT ....	1	
17	30X-16358-00-00	PLATE, PUSH ....	1	
18	1W1-16356-02-00	ROD, PUSH 1 ....	1	
19	92990-06200-00	WASHER ....	1	
20	95380-06600-00	NUT ....	1	
21	93503-16010-00	BALL ....	1	
22	2J5-16357-00-00	ROD, PUSH 2 ....	1	
23	37F-16380-02-00	PUSH LEVER ASSEMBLY ....	1	
24	90508-20555-00	SPRING, TORSION ....	1	
25	90201-14217-00	WASHER, PLATE ....	1	
26	93104-14004-00	OIL SEAL ....	1	
27	93315-21429-00	BEARING ....	1	



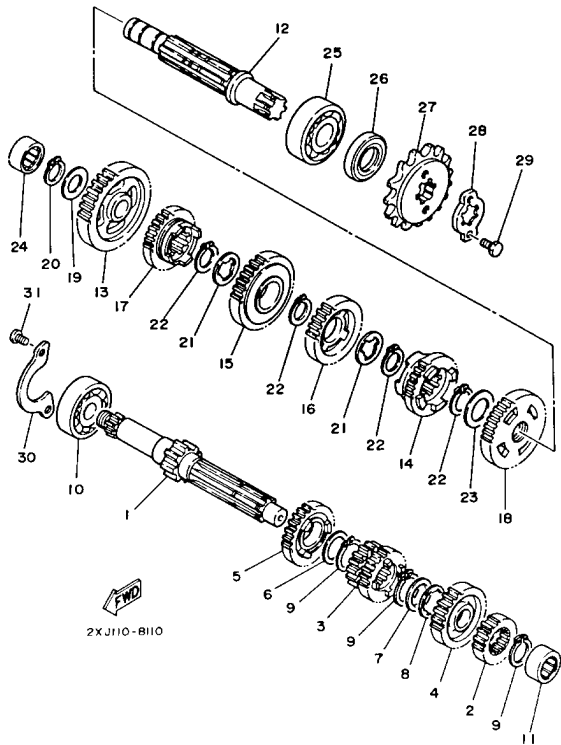
# TRANSMISSION

Ref. No.	Part Number	Description	Qty	Remarks
1	2XJ-17411-00-00	AXLE, MAIN	1	
2	2XJ-17121-00-00	GEAR, 2ND PINION (14T)	1	
3	2XJ-17131-00-00	GEAR, 3RD-4TH PINION (15T-16T)	1	
4	2XJ-17161-00-00	GEAR, 6TH PINION (21T)	1	
5	2XJ-17151-00-00	GEAR, 5TH PINION (18T)	1	
6	90201-20266-00	WASHER, PLATE (1.0T)	1	
7	90201-206L6-00	WASHER, PLATE	1	
8	90209-16133-00	WASHER	1	
9	93410-20038-00	CIRCLIP	3	
10	93306-20417-00	BEARING (B62042RS)	1	
11	93311-31567-00	BEARING, CYLINDRICAL	1	
12	37F-17421-00-00	AXLE, DRIVE	1	
13	2XJ-17211-00-00	GEAR, 1ST WHEEL (34T)	1	
14	2XJ-17261-00-00	GEAR, 6TH WHEEL (19T)	1	
15	2XJ-17231-00-00	GEAR, 3RD WHEEL (25T)	1	
16	2XJ-17241-00-00	GEAR, 4TH WHEEL (20T)	1	
17	2XJ-17251-00-00	GEAR, 5TH WHEEL (19T)	1	
18	2XJ-17221-00-00	GEAR, 2ND WHEEL (31T)	1	
19	90201-150J4-00	WASHER, PLATE	1	
20	93440-15012-00	CIRCLIP	1	
21	90209-18135-00	WASHER	2	
22	93410-22039-00	CIRCLIP	4	
23	90201-22555-00	WASHER, PLATE	1	
24	93311-51554-00	BEARING	1	
25	93306-30438-00	BEARING	1	
26	93102-20143-00	OIL SEAL	1	
27	93832-13164-00	SPROCKET, DRIVE (13T)	1	
28	5H0-17456-00-00	HOLDER, SPROCKET	1	

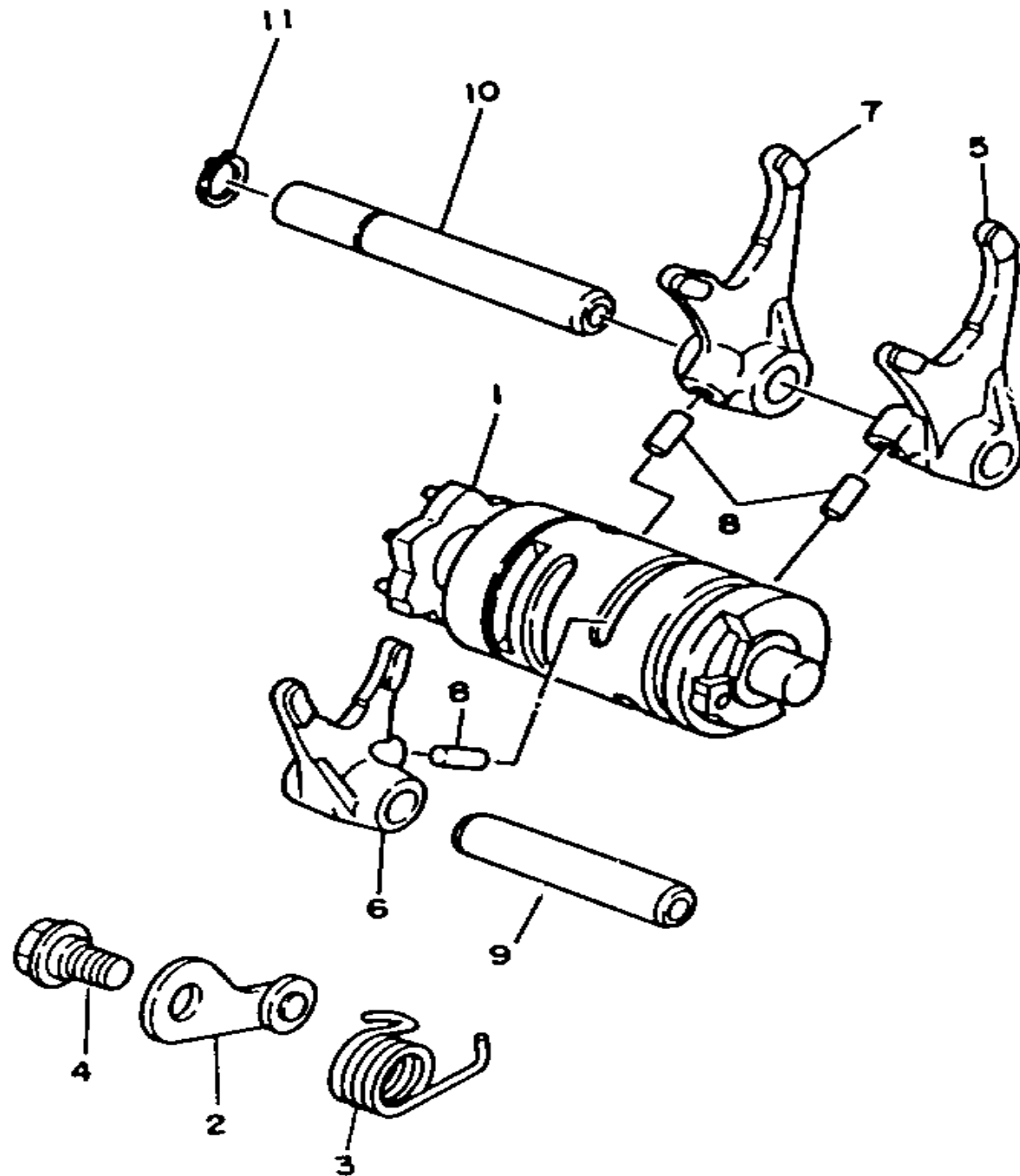
CONTINUED ON NEXT FRAME ➤

# TRANSMISSION

Ref. No.	Part Number	Description	Qty	Remarks
29	97021-06012-00	BOLT .....	2	
30	10V-17471-00-00	PLATE, COVER .....	1	
31	98580-06012-00	SCREW, PAN HEAD .....	2	

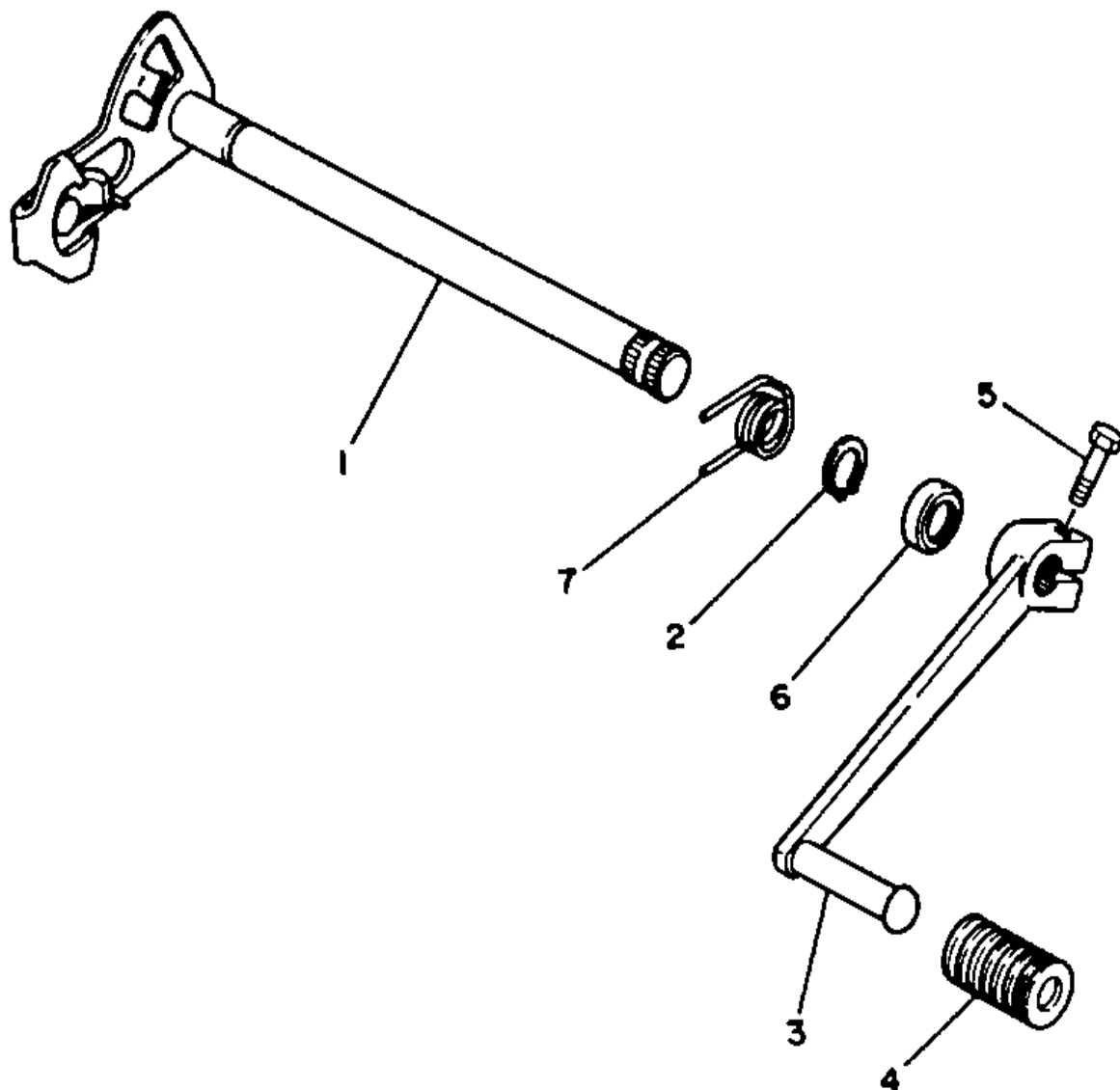






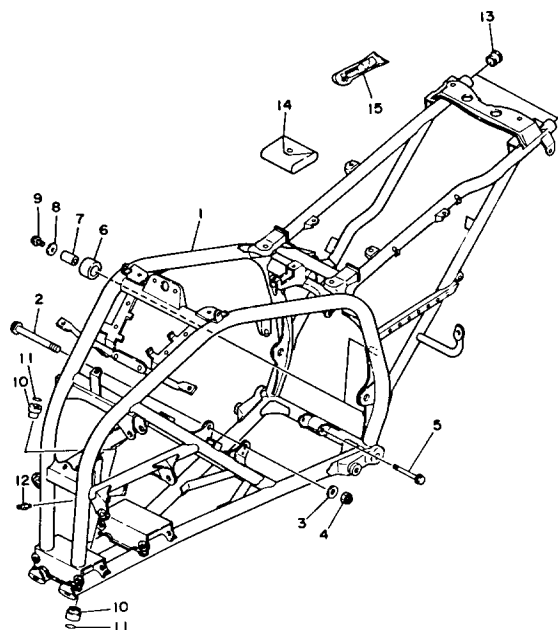
## SHIFT CAM - FORK

Ref. No.	Part Number	Description	Qty	Remarks
1	2XJ-18540-01-00	SHIFT CAM ASSEMBLY .....	1	
2	10V-18140-00-00	STOPPER LEVER ASSEMBLY .	1	
3	90508-29749-00	SPRING, TORSION .....	1	
4	90109-063F7-00	BOLT .....	1	
5	37F-18511-00-00	FORK, SHIFT 1 .....	1	
6	37F-18512-00-00	FORK, SHIFT 2 .....	1	
7	37F-18513-00-00	FORK, SHIFT 3 .....	1	
8	90250-06013-00	PIN, STRAIGHT .....	3	
9	5X5-18531-01-00	BAR, SHIFT FORK GUIDE 1 ...	1	
10	34X-18535-00-00	BAR, SHIFT FORK GUIDE 2 ...	1	
11	99009-10400-00	CIRCLIP .....	1	



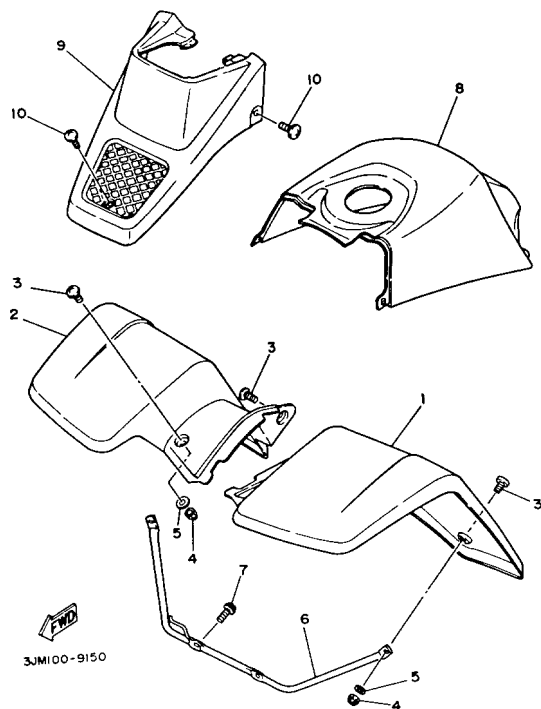
## SHIFT SHAFT

Ref. No.	Part Number	Description	Qty	Remarks
1	37F-18101-02-00	SHIFT SHAFT ASSEMBLY . . . .	1	
2	99006-10600-00	CIRCLIP . . . . .	1	
3	2XJ-18111-00-00	PEDAL, SHIFT . . . . .	1	
4	132-18113-01-00	COVER, SHIFT PEDAL . . . . .	1	
5	97016-06020-00	BOLT . . . . .	1	
6	93101-12060-00	OIL SEAL . . . . .	1	
7	90508-32553-00	SPRING, TORSION . . . . .	1	



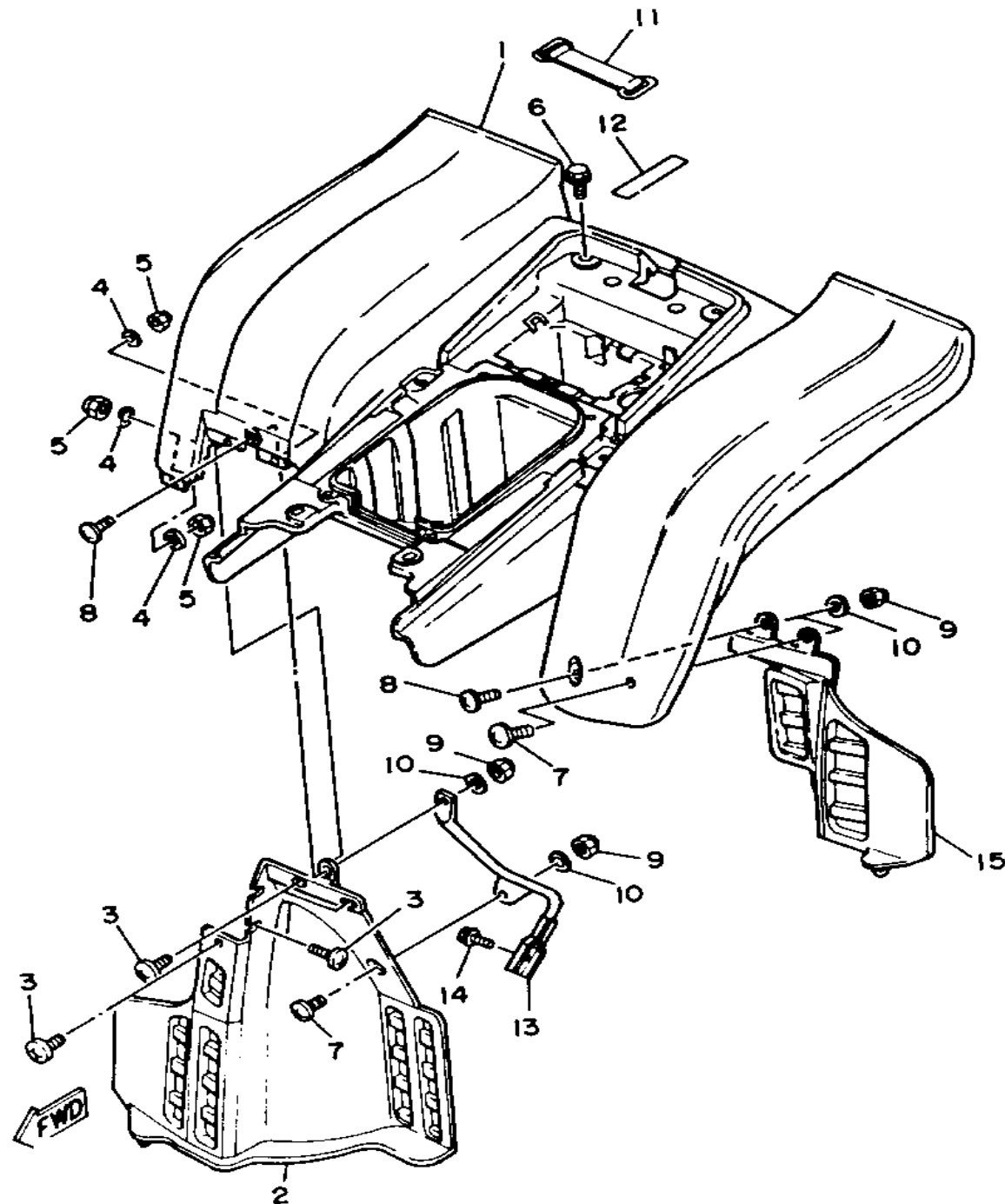
# FRAME

Ref. No.	Part Number	Description	Qty	Remarks
1	2XJ-21110-10-35	FRAME COMP. ....	1	SILVER
2	90105-10328-00	BOLT, WASHER BASED .....	1	
3	90201-10774-00	WASHER, PLATE .....	1	
4	90185-10060-00	NUT, SELF-LOCKING .....	1	
5	90105-08221-00	BOLT, WASHER BASED .....	1	
6	30X-22178-00-00	TENSIONER .....	2	
7	4V4-22184-00-00	BUSH .....	2	
8	90201-08753-00	WASHER, PLATE .....	2	
9	95811-08012-00	BOLT, FLANGE .....	2	
10	90381-15040-00	BUSH, SOLID .....	2	
11	93210-15566-00	O-RING .....	2	
12	93700-06004-00	NIPPLE, GREASE .....	1	
13	90338-23172-00	PLUG .....	2	
14	2XJ-28100-00-00	TOOL KIT .....	1	
15	1NV-2811A-00-00	GAUGE, AIR .....	1	



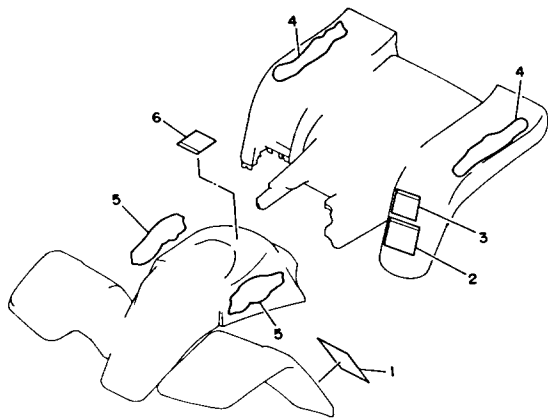
# FRONT FENDER

Ref. No.	Part Number	Description	Qty	Remarks
1	2XJ-21511-30-00	FENDER, FRONT .....	1	UR VERY PALE BLUE SOLID 1
	2XJ-21511-40-00	FENDER, FRONT .....	1	UR PURPLISH WHITE SOLID 1
2	2XJ-21556-30-00	FENDER, FRONT 2 .....	1	UR VERY PALE BLUE SOLID 1
	2XJ-21556-40-00	FENDER, FRONT 2 .....	1	UR PURPLISH WHITE SOLID 1
3	90149-06007-00	SCREW .....	6	
4	95601-06100-00	NUT, U .....	4	
5	92990-06200-00	WASHER .....	4	
6	2XJ-21513-00-00	STAY, FENDER 1 .....	1	
7	95811-06012-00	BOLT, FLANGE .....	2	
8	2XJ-2171A-50-00	COVER, TOP .....	1	UR VIVID MAGENTA SOLID 2
	2XJ-2171A-60-00	COVER, TOP .....	1	UR NEW ELTORO ORANGE
9	2XJ-23391-50-00	PANEL, FRONT .....	1	UR VIVID MAGENTA SOLID 2
	2XJ-23391-60-00	PANEL, FRONT .....	1	UR NEW ELTORO ORANGE
10	90154-05051-00	SCREW, BINDING .....	3	



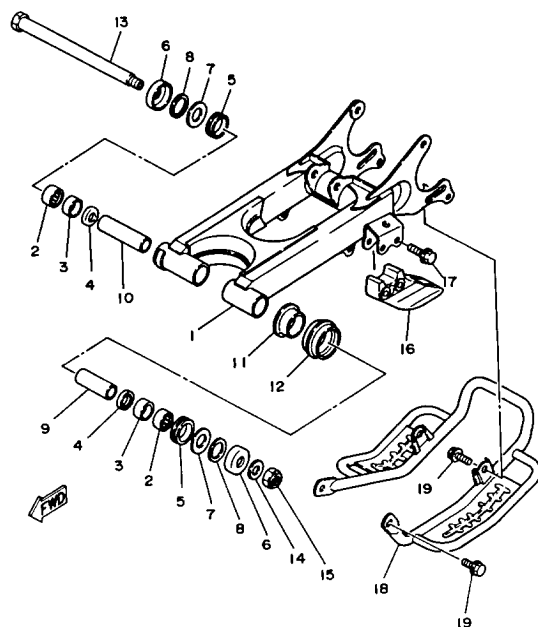
## REAR FENDER

Ref. No.	Part Number	Description	Qty	Remarks
1	2XJ-21611-60-00	FENDER, REAR .....	1	UR VERY PALE BLUE SOLID 1
	2XJ-21611-70-00	FENDER, REAR .....	1	UR PURPLISH WHITE SOLID 1
2	3JM-21621-00-00	FLAP .....	1	
3	90154-05005-00	SCREW, BINDING .....	5	
4	92990-05200-00	WASHER, PLAIN .....	5	
5	95601-05100-00	NUT, U .....	5	
6	90119-06056-00	BOLT, WITH WASHER .....	6	
7	90149-06007-00	SCREW .....	2	
8	90150-06012-00	SCREW, ROUND HEAD .....	2	
9	95601-06100-00	NUT, U .....	4	
10	92990-06200-00	WASHER .....	4	
11	2T4-82131-00-00	BAND, BATTERY .....	1	
12	93210-61750-00	O-RING .....	1	
13	2XJ-21614-00-00	STAY, FENDER 2 .....	1	
14	92016-08012-00	SCREW .....	1	
15	3JM-21691-00-00	FLAP .....	1	



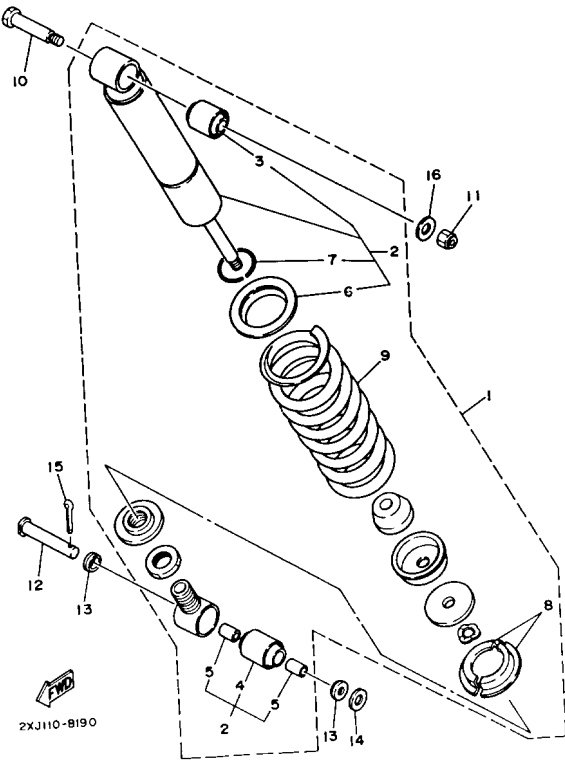
# EMBLEM - LABEL 1

Ref. No.	Part Number	Description	Qty	Remarks
1	3JN-21568-00-00	LABEL, WARNING .....	1	
2	3JM-21696-00-00	LABEL, CAUTION .....	1	
3	3JN-2151H-00-00	LABEL 5 .....	1	
4	3JM-2165A-20-00	GRAPHIC SET, REAR FENDER	1	UR FOR VPBS 1
	3JM-2165A-30-00	GRAPHIC SET, REAR FENDER	1	UR FOR PWS 1
5	3JM-21570-20-00	GRAPHIC SET, FRONT FENDER .....	1	UR FOR VPBS 1
	3JM-21570-30-00	GRAPHIC SET, FRONT FENDER .....	1	UR FOR PWS 1
6	3FA-2415A-00-00	LABEL, CAUTION .....	1	



# SWING ARM

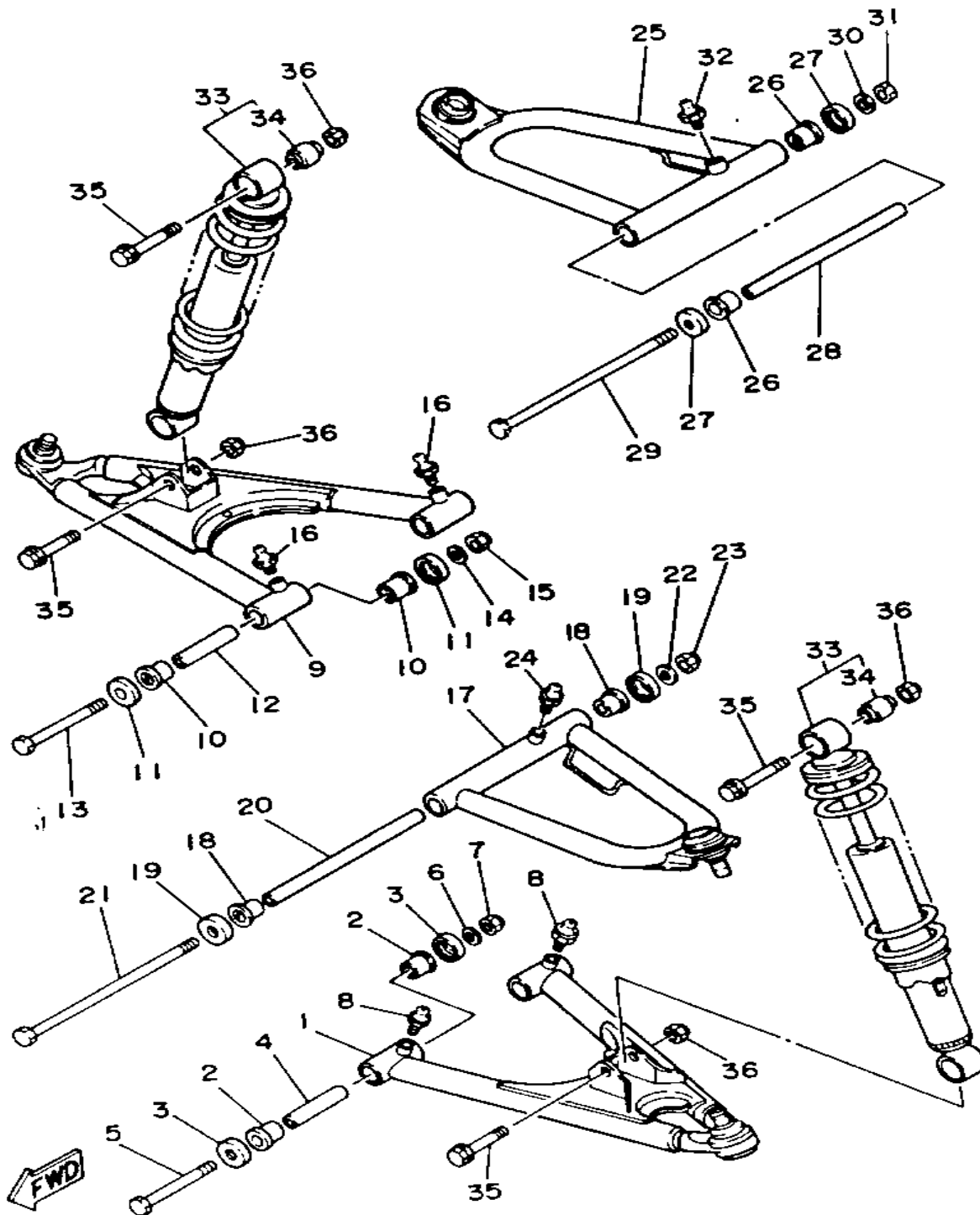
Ref. No.	Part Number	Description	Qty	Remarks
1	2XJ-22110-00-35	REAR ARM COMP. ....	1	SILVER
2	93317-32231-00	BEARING .....	2	
3	90380-22111-00	BUSH, SOLID .....	2	
4	93106-22019-00	OIL SEAL (DC 22-28-8) .....	2	
5	93108-35004-00	OIL SEAL (35-41-8) .....	2	
6	2K6-22128-01-00	COVER, THRUST 1 .....	2	
7	90201-244A9-00	WASHER, PLATE .....	2	
8	240-22127-00-00	SHIM .....	1	
9	2XJ-22123-00-00	BUSH 1 .....	1	
10	2XJ-22124-00-00	BUSH 2 .....	1	
11	2GU-22155-00-00	PIPE .....	1	
12	2GU-22151-10-00	SEAL, GUARD .....	1	
13	2JN-22141-00-00	SHAFT, PIVOT .....	1	
14	90201-14218-00	WASHER, PLATE .....	1	
15	90185-14070-00	NUT, SELF-LOCKING .....	1	
16	38W-22199-00-00	SUPPORT, CHAIN .....	1	
17	95811-08040-00	BOLT, FLANGE .....	2	
18	2XJ-2219X-00-00	COVER .....	1	
19	95811-08012-00	BOLT, FLANGE .....	4	



# REAR SHOCKS

Ref. No.	Part Number	Description	Qty	Remarks
1	2XJ-22210-10-0F	SHOCK ABSORBER ASSEMBLY, REAR .....	1	UR NEW ELTORO ORANGE
	2XJ-22210-10-P1	SHK/ABS ASSEMBLY, REARREAR .....	1	UR VIVID MAGENTA SOLID 2
2	2XJ-22201-20-00	. DAMPER SUB ASSEMBLY ..	1	
3	1NU-22216-00-00	.. BUSH, REAR SHOCK ABSORBER .....	1	
4	1NU-22226-00-00	.. BUSH, SHOCK ABSORBER LOWER .....	1	
5	90380-12051-00	.. BUSH, SOLID .....	2	
6	22W-22223-00-00	.. SEAT, SPRING LOWER ....	1	
7	93440-42101-00	.. CIRCLIP .....	1	
8	22W-22214-01-00	. GUIDE, SPRING 1 .....	2	
9	2XJ-22212-00-0F	. SPRING .....	1	UR NEW ELTORO ORANGE
	2XJ-22212-00-P1	. SPRING .....	1	UR VIVID MAGENTA SOLID 2
10	90109-10736-00	BOLT .....	1	
11	95601-10100-00	NUT, U (95602-10100-00) .....	1	
12	90240-12092-00	PIN, CLEVIS .....	1	
13	1W1-22128-00-00	COVER, THRUST 1 .....	2	
14	92990-12600-00	WASHER, PLATE .....	1	
15	91401-30030-00	PIN, COTTER .....	1	
16	90201-102G9-00	WASHER, PLATE .....	1	



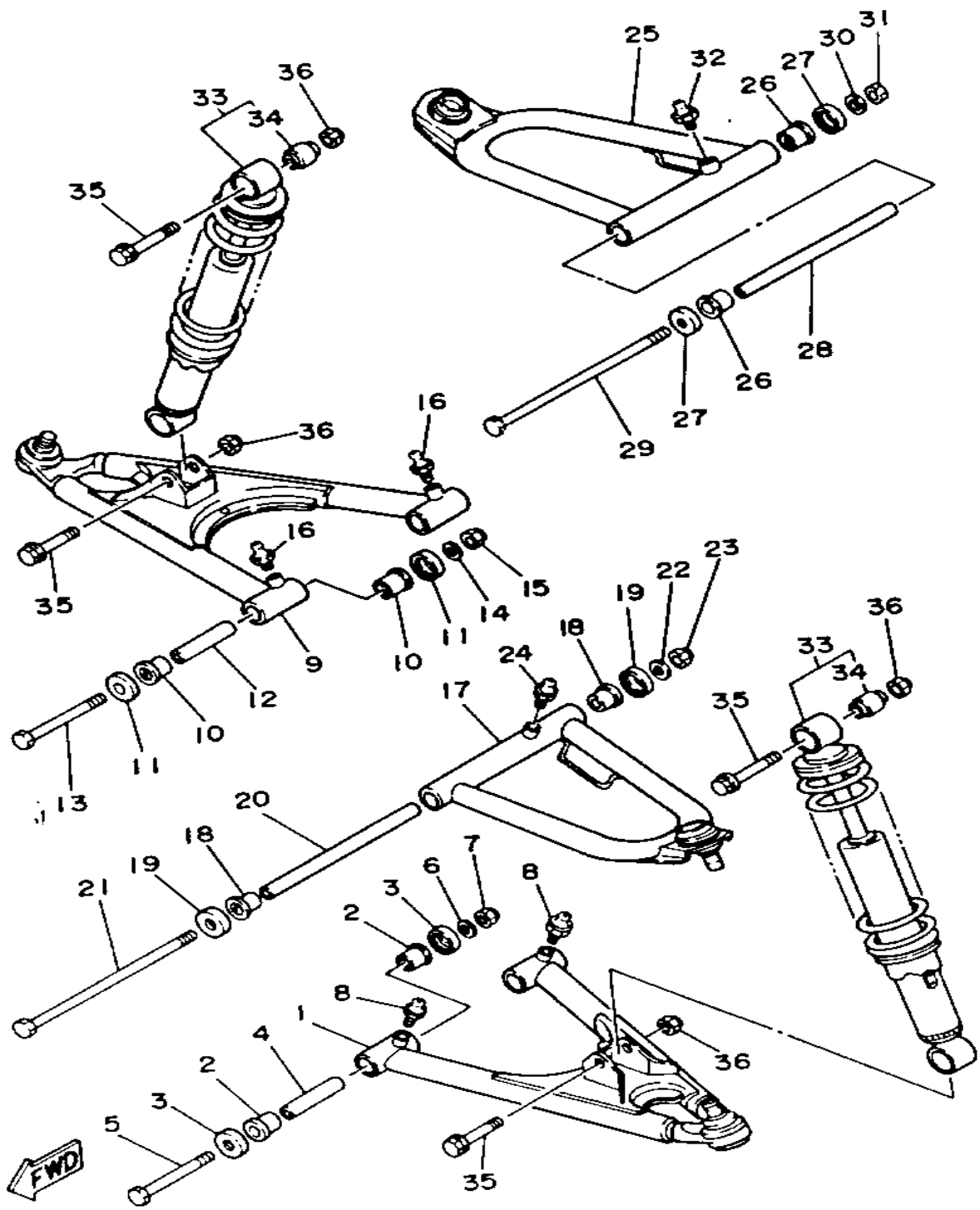


## FRONT SUSPENSION - WHEEL

Ref. No.	Part Number	Description	Qty	Remarks
1	3JM-23570-00-35	FRONT LOWER ARM COMP. (LEFT)	1	SILVER
2	90381-15088-00	BUSH, SOLID	4	
3	1UY-23517-00-00	COVER, THRUST 1	4	
4	90387-101R3-00	COLLAR	2	
5	90101-10655-00	BOLT	2	
6	90201-100F7-00	WASHER, PLATE	2	
7	90185-10120-00	NUT, SELF-LOCKING	2	
8	93700-06004-00	NIPPLE, GREASE	2	
9	3JM-23580-00-35	FRONT LOWER ARM COMP. (RIGHT)	1	SILVER
10	90381-15088-00	BUSH, SOLID	4	
11	1UY-23517-00-00	COVER, THRUST 1	4	
12	90387-101R3-00	COLLAR	2	
13	90101-10655-00	BOLT	2	
14	90201-100F7-00	WASHER, PLATE	2	
15	90185-10120-00	NUT, SELF-LOCKING	2	
16	93700-06004-00	NIPPLE, GREASE	2	
17	2XJ-23540-00-35	FRONT UPPER ARM COMP. (LEFT)	1	SILVER
18	90381-15088-00	BUSH, SOLID	2	
19	1UY-23517-00-00	COVER, THRUST 1	2	
20	90387-101U6-00	COLLAR	1	
21	336-22141-00-00	SHAFT, PIVOT	1	
22	90201-100F7-00	WASHER, PLATE	1	
23	90185-10120-00	NUT, SELF-LOCKING	1	
24	93700-06004-00	NIPPLE, GREASE	1	
25	2XJ-23550-00-35	FRONT UPPER ARM COMP. (RIGHT)	1	SILVER
26	90381-15088-00	BUSH, SOLID	2	

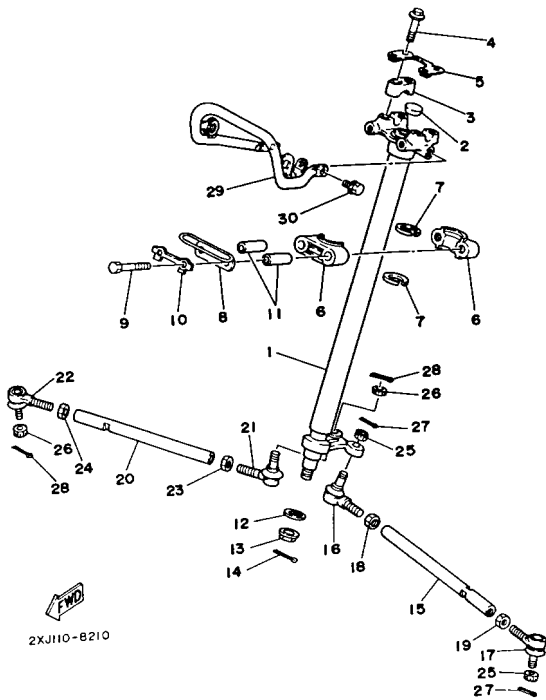
CONTINUED ON NEXT FRAME ►

# FRONT SUSPENSION - WHEEL



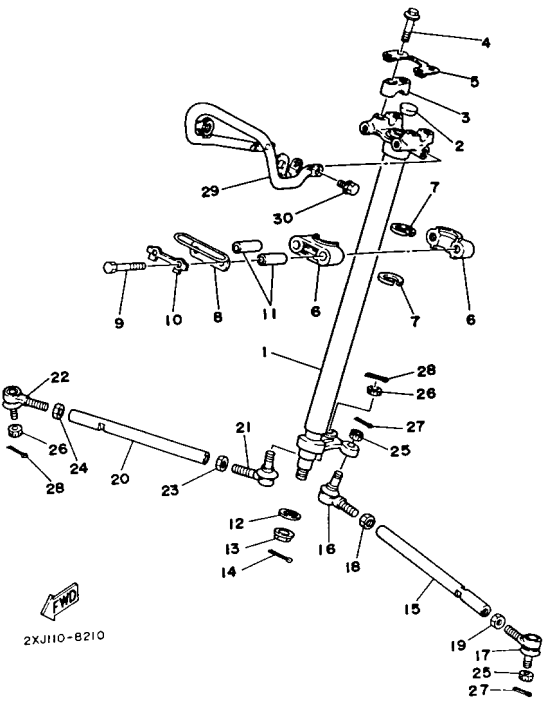
Ref. No.	Part Number	Description	Qty	Remarks
27	1UY-23517-00-00	COVER, THRUST 1 .....	2	
28	90387-101U6-00	COLLAR .....	1	
29	336-22141-00-00	SHAFT, PIVOT .....	1	
30	90201-100F7-00	WASHER, PLATE .....	1	
31	90185-10120-00	NUT, SELF-LOCKING .....	1	
32	93700-06004-00	NIPPLE, GREASE .....	1	
33	2XJ-23350-00-0F	SHOCK ABSORBER ASSEMBLY .....	2	UR NEW ELTORO ORANGE
	2XJ-23350-00-P1	SHOCK ABSORBER ASSEMBLY .....	2	UR VIVID MAGENTA SOLID 2
34	2XJ-2331R-00-00	. DAMPER, BUSH B .....	2	
35	90105-10388-00	BOLT, WASHER BASED .....	4	
36	90185-10060-00	NUT, SELF-LOCKING .....	4	

# STEERING



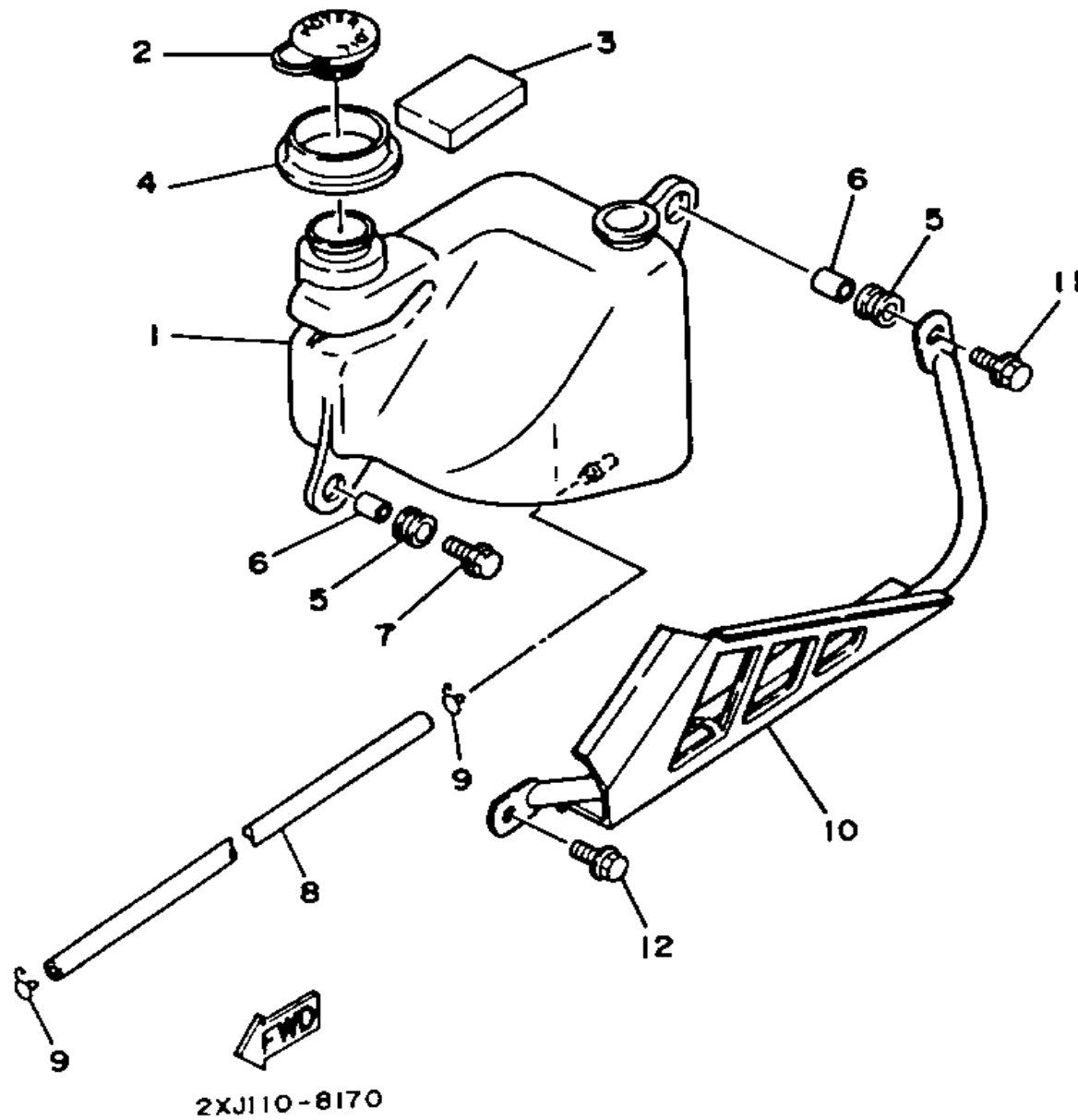
Ref. No.	Part Number	Description	Qty	Remarks
1	2XJ-23813-00-00	COLUMN, STEERING 2	1	
2	90336-28053-00	PLUG, TAPER	1	
3	1E6-23441-00-00	HOLDER, HANDLE UPR	2	
4	95811-08035-00	BOLT, FLANGE (95821-08035)	4	
5	2GU-2629K-00-00	STAY	1	
6	1UY-23812-00-00	PLANE BEARING, STEERING	2	
7	93112-31011-00	OIL SEAL	2	
8	2XJ-23868-00-00	BRACKET, STEERING LOWER	1	
9	98021-08060-00	BOLT	2	
10	1UY-23894-01-00	WASHER, LOCK 1	1	
11	90387-106T4-00	COLLAR (903-87090-R0-00)	2	
12	90201-10774-00	WASHER, PLATE	1	
13	90185-10115-00	NUT, SELF-LOCKING	1	
14	91490-20020-00	PIN, COTTER	1	
15	2XJ-23831-01-00	ROD, TIE	1	
16	1UY-23841-01-00	JOINT, UNIVERSAL 1	1	
17	1UY-23845-01-00	JOINT, UNIVERSAL 2	1	
18	95303-10700-00	NUT	1	
19	90170-10186-00	NUT	1	
20	2XJ-23831-01-00	ROD, TIE	1	
21	1UY-23841-01-00	JOINT, UNIVERSAL 1	1	
22	1UY-23845-01-00	JOINT, UNIVERSAL 2	1	
23	95303-10700-00	NUT	1	
24	90170-10186-00	NUT	1	
25	90171-10046-00	NUT, CASTLE	2	
26	90171-10046-00	NUT, CASTLE	2	
27	91490-20020-00	PIN, COTTER	2	
28	91490-20020-00	PIN, COTTER	2	
29	2XJ-23174-00-00	STAY, HEADLIGHT	1	

CONTINUED ON NEXT FRAME ➤



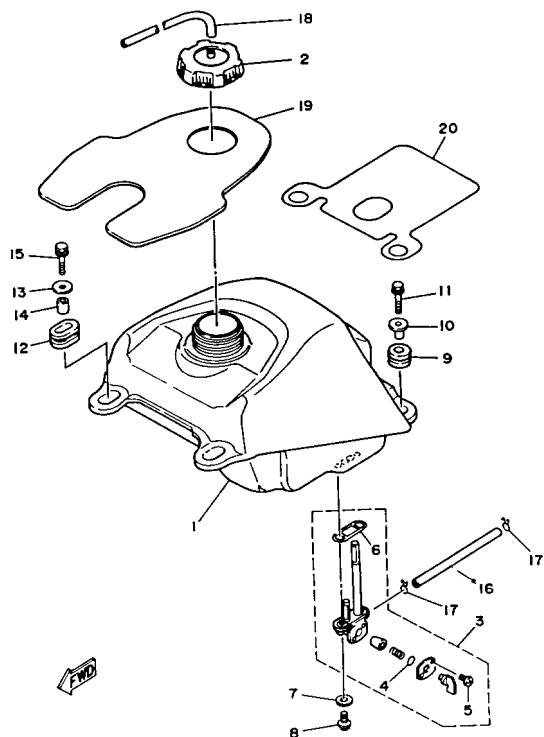
# STEERING

Ref. No.	Part Number	Description	Qty	Remarks
30	95816-08014-00	BOLT, flange (95806-08014-00)	4	



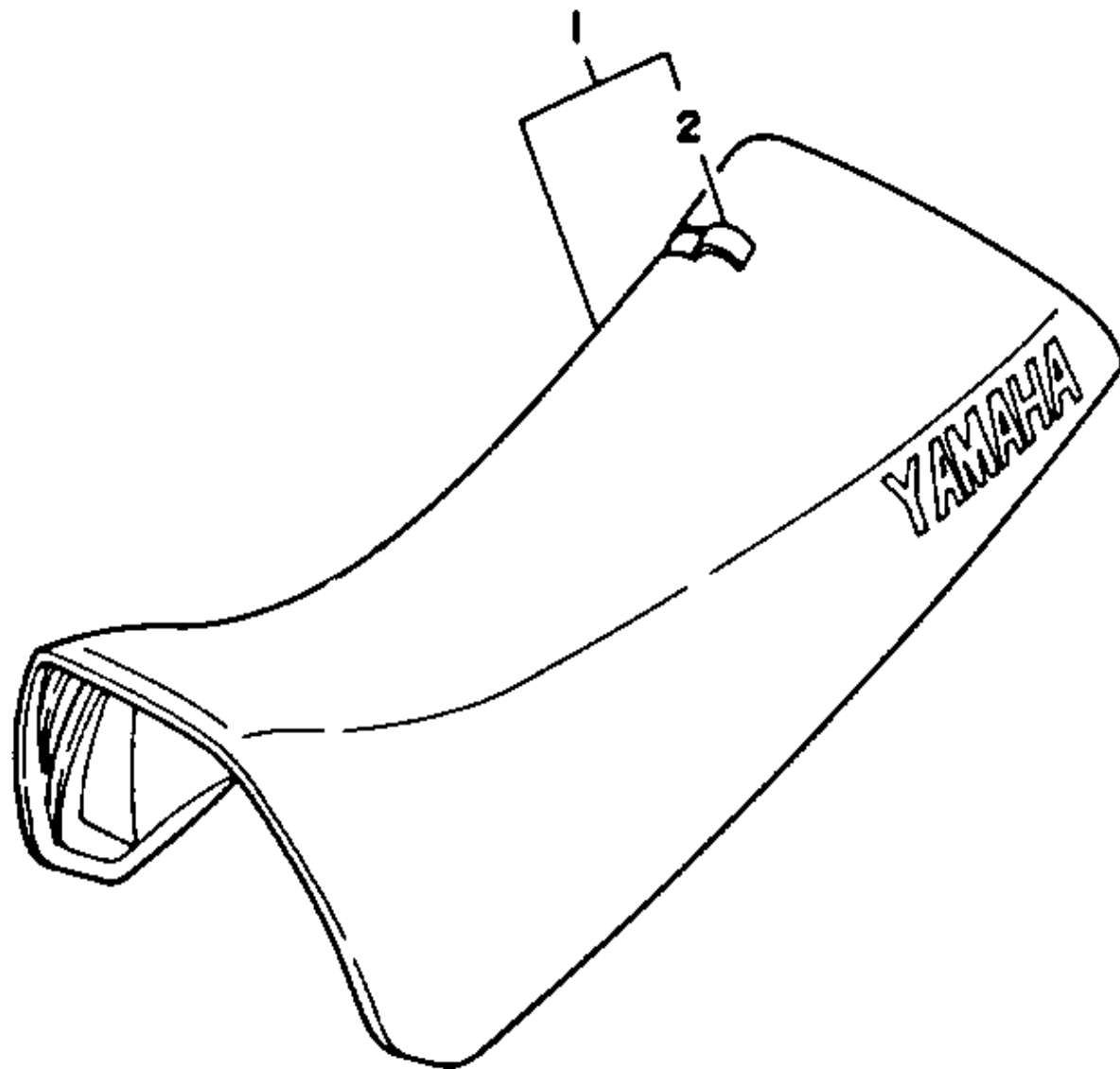
## OIL TANK

Ref. No.	Part Number	Description	Qty	Remarks
1	2XJ-21751-01-00	TANK, OIL .....	1	
2	2N3-21771-01-00	BODY, CAP .....	1	
3	2XJ-21746-00-00	DAMPER .....	1	
4	90480-48493-00	GROMMET .....	1	
5	90480-13238-00	GROMMET .....	2	
6	90387-07391-00	COLLAR .....	2	
7	95816-06025-00	BOLT, FLANGE .....	1	
8	90445-096F4-00	HOSE .....	1	
9	90467-08003-00	CLIP .....	2	
10	2XJ-2172W-00-00	COVER .....	1	
11	95816-06025-00	BOLT, FLANGE .....	1	
12	95816-06025-00	BOLT, FLANGE .....	1	



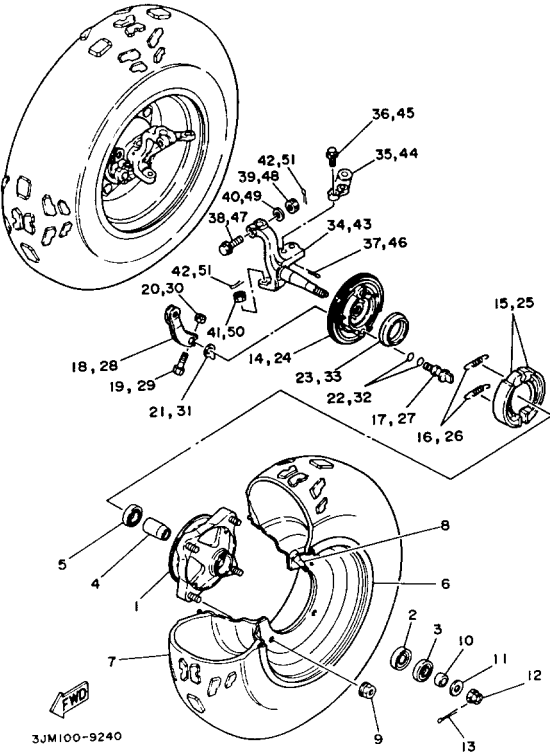
# FUEL TANK

Ref. No.	Part Number	Description	Qty	Remarks
1	2XJ-24110-00-00	FUEL TANK COMP. ....	1	
2	1UY-24610-00-00	CAP ASSEMBLY ....	1	
3	55W-24500-01-00	FUEL COCK ASSEMBLY 1 ...	1	
4	4X8-24534-00-00	. SEAL, COCK ....	1	
5	98580-03008-00	. SCREW, PAN HEAD ....	2	
6	4X8-24512-00-00	. O-RING ....	1	
7	90202-05193-00	WASHER, PLATE ....	2	
8	90149-06011-00	SCREW ....	2	
9	90480-18290-00	GROMMET ....	2	
10	90387-066H4-00	COLLAR ....	2	
11	90119-06073-00	BOLT, WITH WASHER ....	2	
12	90480-01400-00	GROMMET ....	2	
13	90201-060L5-00	WASHER, PLATE ....	2	
14	90387-07598-00	COLLAR ....	2	
15	90119-06073-00	BOLT, WITH WASHER ....	2	
16	90445-100E9-00	HOSE ....	1	
17	90467-09006-00	CLIP ....	2	
18	90445-09111-00	HOSE ....	1	
19	2XJ-2414H-01-00	DAMPER, PLATE 1 ....	1	
20	3JM-2414J-00-00	DAMPER, PLATE 2 ....	1	



## SEAT

Ref. No.	Part Number	Description	Qty	Remarks
1	2XJ-24710-70-00	SINGLE SEAT ASSEMBLY ...	1	UR VIVID MAGENTA SOLID 1
	2XJ-24710-80-00	SINGLE SEAT ASSEMBLY ...	1	UR NEW ELTORO ORANGE
2	2XJ-24731-70-00	. COVER, SEAT .....	1	UR VIVID MAGENTA SOLID 1
	2XJ-24731-80-00	. COVER, SEAT .....	1	UR NEW ELTORO ORANGE

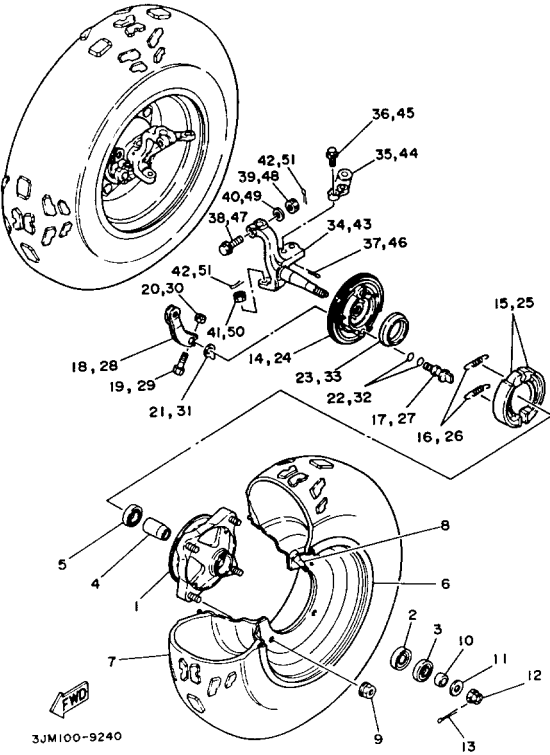


# FRONT WHEEL

Ref. No.	Part Number	Description	Qty	Remarks
1	2XJ-25111-00-00	HUB, FRONT .....	2	
2	93306-20209-00	BEARING (B6202) .....	2	
3	93102-22216-00	OIL SEAL .....	2	
4	1UY-25117-00-00	SPACER, BEARING .....	2	
5	93306-90403-00	BEARING .....	2	
6	2XJ-25180-00-UJ	FRONT WHEEL COMP. ....	2	RADICAL WHITE DUNLOP
7	94107-106W0-00	TIRE (AT21X7-10**KT894A T/L)	2	
8	93900-00030-00	VALVE, RIM .....	2	
9	95701-10500-00	NUT, FLANGE (95702-10500) ..	8	
10	90387-150R1-00	COLLAR .....	2	
11	90201-14586-00	WASHER, PLATE .....	2	
12	90171-14020-00	NUT, CASTLE .....	2	
13	91401-30030-00	PIN, COTTER .....	2	
14	2XJ-25121-00-00	PLATE, BRAKE SHOE .....	1	
15	5H0-W2536-00-00	BRAKESHOE SET-2PCS .....	1	
16	90506-15260-00	SPRING, TENSION .....	2	
17	5G3-25351-02-00	CAMSHAFT .....	1	
18	52H-25155-00-00	LEVER, CAMSHAFT 1 .....	1	
19	90101-06278-00	BOLT .....	1	
20	95380-06600-00	NUT .....	1	
21	52H-2513A-00-00	PLATE, INDICATOR .....	1	
22	93210-12327-00	O-RING .....	2	
23	93105-49023-00	OIL SEAL .....	1	
24	2XJ-25169-00-00	PLATE, BRAKE SHOE 2 .....	1	
25	5H0-W2536-00-00	BRAKESHOE SET-2PCS .....	1	
26	90506-15260-00	SPRING, TENSION .....	2	
27	5G3-25351-02-00	CAMSHAFT .....	1	
28	52H-25156-00-00	LEVER, CAMSHAFT 2 .....	1	
29	90101-06278-00	BOLT .....	1	

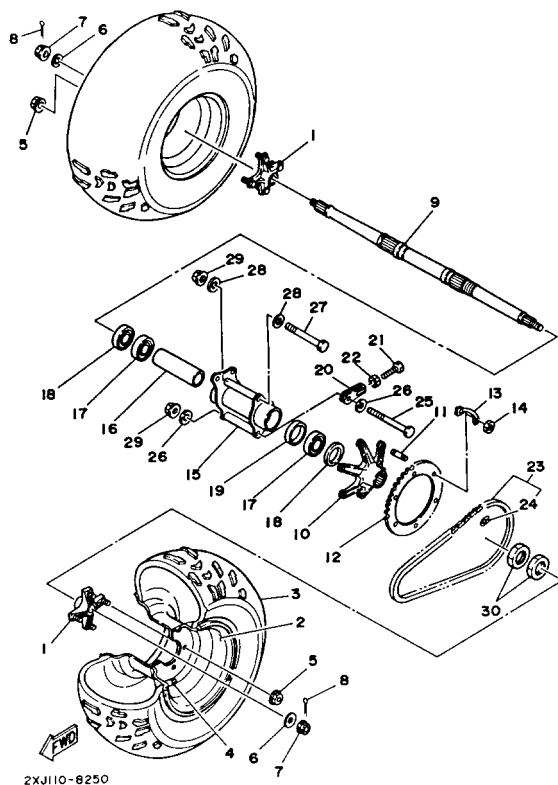
CONTINUED ON NEXT FRAME ➤





# FRONT WHEEL

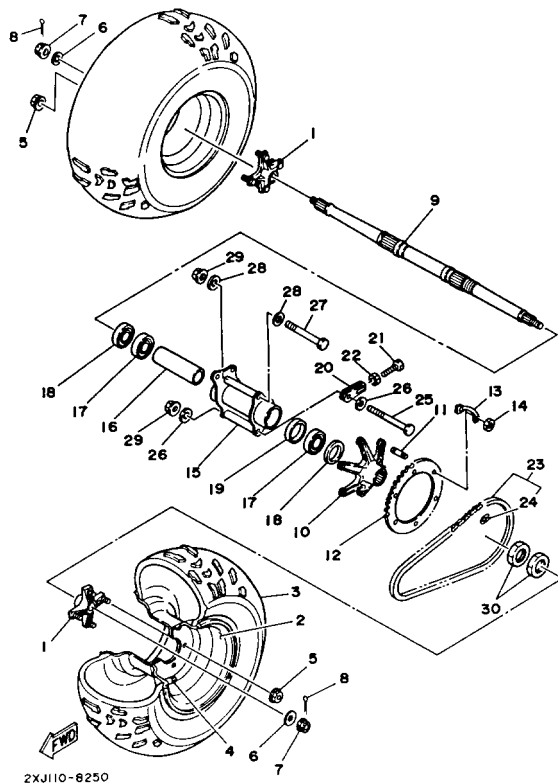
Ref. No.	Part Number	Description	Qty	Remarks
30	95380-06600-00	NUT .....	1	
31	52H-2513A-00-00	PLATE, INDICATOR .....	1	
32	93210-12327-00	O-RING .....	2	
33	93105-49023-00	OIL SEAL .....	1	
34	3JM-23511-00-00	KNUCKLE, STEERING 1 .....	1	
35	2XJ-23512-00-00	ARM, KNUCKLE 1 (LEFT) .....	1	
36	90105-10507-00	BOLT, WASHER BASED .....	2	
37	91490-20020-00	PIN, COTTER .....	2	
38	90105-10549-00	BOLT, WASHER BASED .....	1	
39	95332-10600-00	NUT .....	1	
40	90201-100F7-00	WASHER, PLATE .....	1	
41	90171-10046-00	NUT, CASTLE .....	1	
42	91490-20020-00	PIN, COTTER .....	2	
43	3JM-23521-00-00	KNUCKLE, STEERING 2 .....	1	
44	2XJ-23522-00-00	ARM, KNUCKLE 2 (RIGHT) ...	1	
45	90105-10507-00	BOLT, WASHER BASED .....	2	
46	91490-20020-00	PIN, COTTER .....	2	
47	90105-10549-00	BOLT, WASHER BASED .....	1	
48	95332-10600-00	NUT .....	1	
49	90201-100F7-00	WASHER, PLATE .....	1	
50	90171-10046-00	NUT, CASTLE .....	1	
51	91490-20020-00	PIN, COTTER .....	2	



# REAR WHEEL

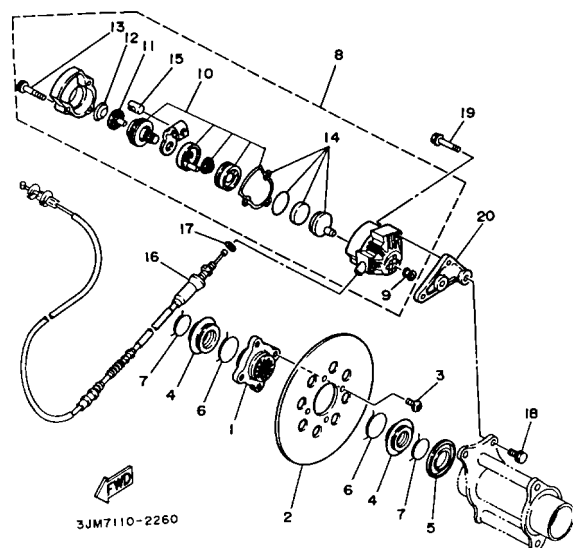
Ref. No.	Part Number	Description	Qty	Remarks
1	2XJ-25383-00-00	COLLAR, WHEEL .....	2	
2	2VY-25390-00-UJ	REAR WHEEL COMP. ....	2	RADICAL WHITE
3	94110-085W9-00	TIRE (AT21X10-8*KT895A T/L N) ...	2	DUNLOP
4	93900-00030-00	VALVE, RIM .....	2	
5	95701-10500-00	NUT, FLANGE (95702-10500) ..	8	
6	90201-140A6-00	WASHER, PLATE .....	2	
7	90171-14037-00	NUT, CASTLE .....	2	
8	91401-30030-00	PIN, COTTER .....	2	
9	2XJ-25381-00-00	AXLE, WHEEL .....	1	
10	2XJ-25386-00-00	COLLAR, SPROCKET AXLE ..	1	
11	90116-08507-00	BOLT, STUD .....	6	
12	2XJ-25440-20-00	SPROCKET, DRIVEN (40T) ...	1	
13	2XJ-25412-00-00	WASHER .....	3	
14	90170-08258-00	NUT .....	6	
15	2XJ-25311-00-35	HUB, REAR .....	1	SILVER
16	2XJ-25317-00-00	SPACER, BEARING .....	1	
17	93306-00705-00	BEARING .....	2	
18	93106-42026-00	OIL SEAL .....	2	
19	90387-561U7-00	COLLAR .....	1	
20	2XJ-25388-00-00	PULLER, CHAIN 1 .....	2	
21	90101-08615-00	BOLT .....	2	
22	95303-08600-00	NUT .....	2	
23	94581-08092-00	CHAIN .....	1	
24	94681-08011-00	. JOINT, CHAIN (D.I.D 520V6-FJ)	1	
25	90101-10678-00	BOLT .....	1	
26	90201-106F2-00	WASHER, PLATE .....	2	
27	90101-10678-00	BOLT .....	1	
28	90201-106F2-00	WASHER, PLATE .....	2	

CONTINUED ON NEXT FRAME ➤



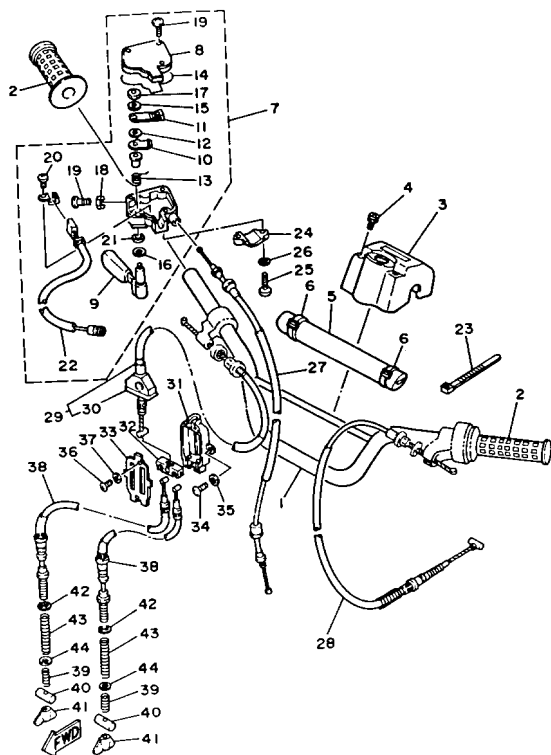
# REAR WHEEL

Ref. No.	Part Number	Description	Qty	Remarks
29	95701-10500-00	NUT, FLANGE (95702-10500) . .	2	
30	90170-33376-00	NUT .....	2	



# REAR BRAKE CALIPER

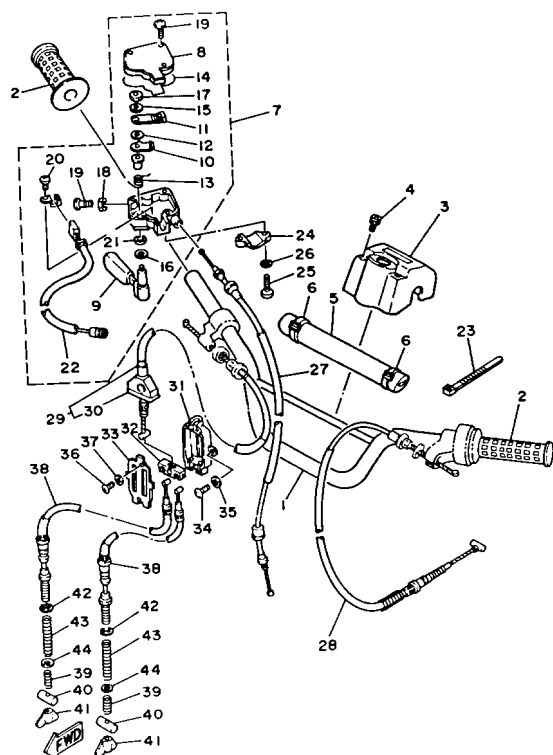
Ref. No.	Part Number	Description	Qty	Remarks
1	2XJ-25712-00-00	BRACKET, DISC .....	1	
2	2XJ-25831-50-00	DISC, BRAKE .....	1	
3	90109-081F0-00	BOLT .....	4	
4	2XJ-25715-00-00	COVER 1 .....	2	
5	2XJ-25367-00-00	COVER, HUB DUST .....	1	
6	93440-44158-00	CIRCLIP .....	2	
7	93440-36159-00	CIRCLIP .....	2	
8	2XJ-25810-50-00	CALIPER ASSEMBLY .....	1	
9	2XJ-25916-00-00	. PLUG .....	1	
10	2XJ-25726-01-00	. BRAKE LEVER SET .....	1	
11	2XJ-25771-00-00	. RATCHET, ADJUSTING .....	1	
12	2XJ-25772-00-00	. SPRING, RATCHET FIX .....	1	
13	2XJ-25818-00-00	. BOLT, CALIPER .....	3	
14	2XJ-25811-00-00	. PAD, CALIPER 2 .....	1	
15	2XJ-25734-00-00	. PIN 1 .....	1	
16	2XJ-26351-00-00	CABLE, BRAKE .....	1	
17	90201-080L7-00	WASHER, PLATE .....	1	
18	90105-08520-00	BOLT, WASHER BASED .....	2	
19	90105-08521-00	BOLT, WASHER BASED .....	2	
20	2XJ-25721-00-00	BRACKET, CALIPER .....	1	



# HANDLEBAR - CABLE

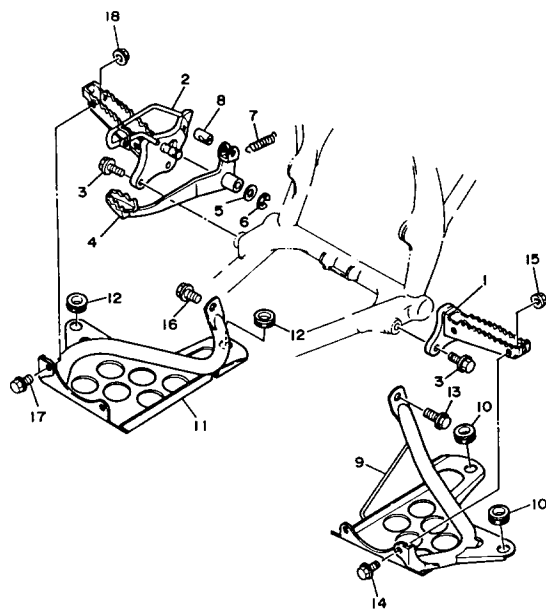
Ref. No.	Part Number	Description	Qty	Remarks
1	2GU-26111-00-00	HANDLEBAR .....	1	
2	3GB-26241-00-00	GRIP (LEFT) .....	2	
3	2GU-26124-00-00	PROTECTOR, HANDLEBAR ..	1	
4	90159-06093-00	SCREW, WITH WASHER .....	2	
5	3GD-2622K-00-00	PROTECTOR 1 .....	1	
6	437-83936-01-00	BAND, SWITCH CORD .....	2	
7	2GU-26250-01-00	THROTTLE LEVER ASSEMBLY	1	
8	2GU-2628F-00-00	. CAP, GEAR .....	1	
9	2GU-2625G-01-00	. LEVER, THROTTLE .....	1	
10	2GU-2625H-00-00	. ARM, THROTTLE .....	1	
11	2GU-2625J-00-00	. ARM, THROTTLE 2 .....	1	
12	2GU-26259-00-00	. COLLAR .....	1	
13	2GU-26314-00-00	. SPRING .....	1	
14	2GU-2628G-00-00	. GASKET .....	1	
15	2GU-26398-00-00	. WASHER .....	1	
16	1NV-26129-00-00	. WASHER .....	1	
17	95612-05100-00	. NUT, U .....	1	
18	95316-05700-00	. NUT .....	1	
19	98506-05020-00	. SCREW, PAN HEAD .....	4	
20	98902-03006-00	. SCREW, BIND .....	1	
21	93104-09025-00	. OIL SEAL .....	1	
22	2GU-82567-00-00	. SWITCH, THROTTLE .....	1	
23	437-83936-01-00	BAND, SWITCH CORD .....	2	
24	4V4-82913-00-00	HOLDER, LEVER LOWER 1 ...	1	
25	98506-05020-00	SCREW, PAN HEAD .....	2	
26	92906-05100-00	WASHER, SPRING .....	2	
27	2XJ-26311-00-00	CABLE, THROTTLE 1 .....	1	
28	2XJ-26335-00-00	CABLE, CLUTCH .....	1	
29	2XJ-26373-00-00	CABLE, BRAKE 4 .....	1	

CONTINUED ON NEXT FRAME ➤



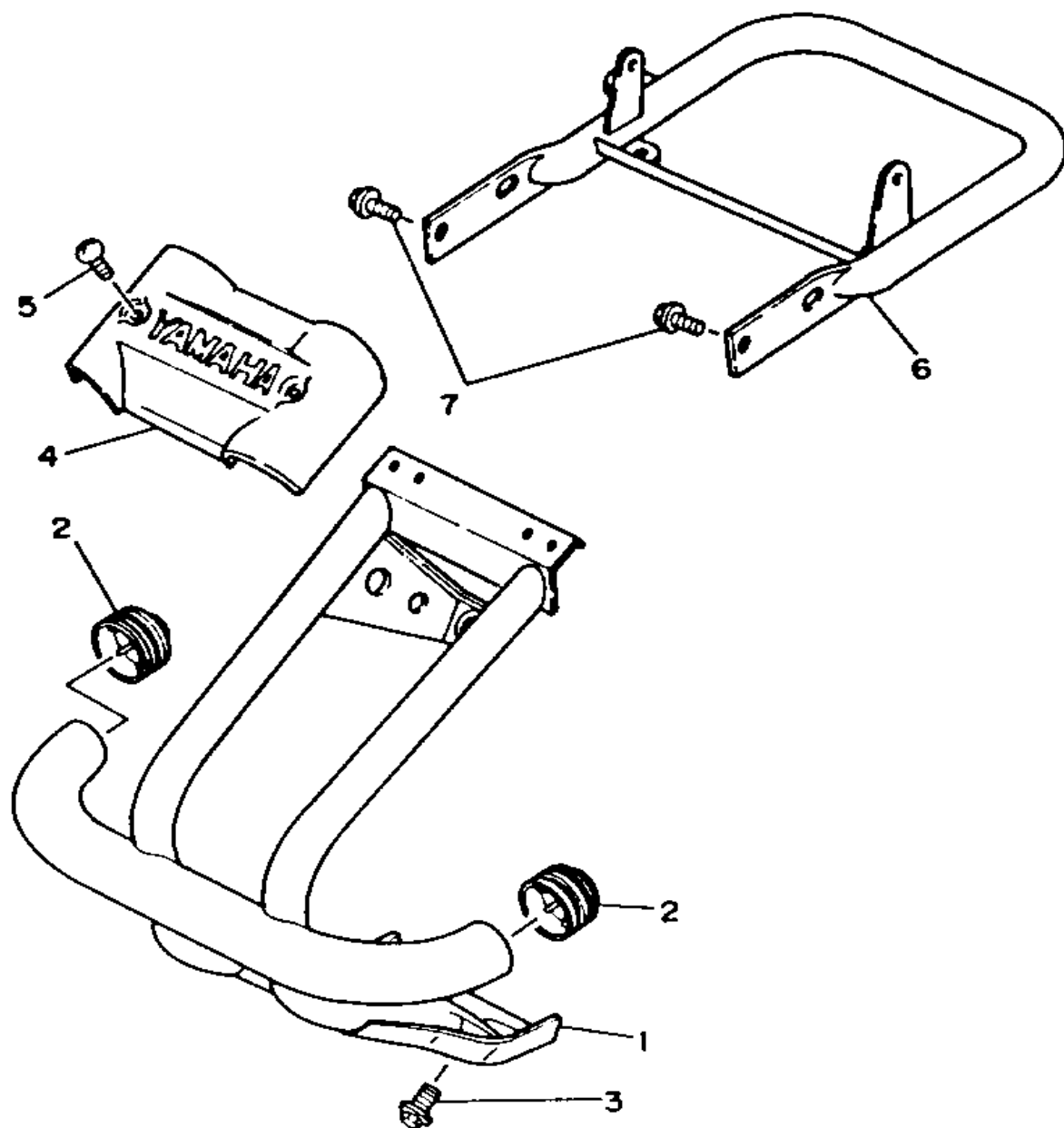
# HANDLEBAR - CABLE

Ref. No.	Part Number	Description	Qty	Remarks
30	52H-26362-00-00	. BOOT .....	1	
31	52H-26371-00-00	HOUSING, BRAKE LINK .....	1	
32	52H-26347-01-00	JOINT, CABLE .....	1	
33	52H-2631G-00-00	PLATE .....	1	
34	98501-05016-00	SCREW, PAN HEAD .....	2	
35	92901-05600-00	WASHER, PLATE .....	2	
36	98580-03008-00	SCREW, PAN HEAD .....	2	
37	92902-03600-00	WASHER .....	2	
38	2XJ-26361-00-00	CABLE, BRAKE .....	2	
39	90501-10782-00	SPRING, COMPRESSION .....	2	
40	90249-12008-00	PIN .....	2	
41	90175-06019-00	NUT, WING .....	2	
42	99009-06600-00	CIRCLIP .....	2	
43	90501-123A0-00	SPRING, COMPRESSION .....	2	
44	90209-06265-00	WASHER .....	2	



# STAND - FOOTREST

Ref. No.	Part Number	Description	Qty	Remarks
1	3JM-27411-00-00	FOOTREST 1 .....	1	
2	3JM-27421-00-00	FOOTREST 2 .....	1	
3	95811-10025-00	BOLT, FLANGE .....	4	
4	3JM-27211-10-00	PEDAL BRAKE .....	1	
5	90201-15797-00	WASHER, PLATE .....	1	
6	93430-12008-00	CIRCLIP .....	1	
7	90506-20193-00	SPRING, TENSION .....	1	
8	90249-14202-00	PIN .....	1	
9	3JM-27445-00-00	PLATE 1 .....	1	
10	90480-18411-00	GROMMET .....	2	
11	3JM-27446-00-00	PLATE 2 .....	1	
12	90480-18411-00	GROMMET .....	2	
13	95811-08016-00	BOLT, FLANGE .....	1	
14	92011-08016-00	SCREW (1FK) .....	2	
15	95701-08500-00	NUT, FLANGE .....	2	
16	95811-08016-00	BOLT, FLANGE .....	1	
17	92011-08016-00	SCREW (1FK) .....	2	
18	95701-08500-00	NUT, FLANGE .....	2	



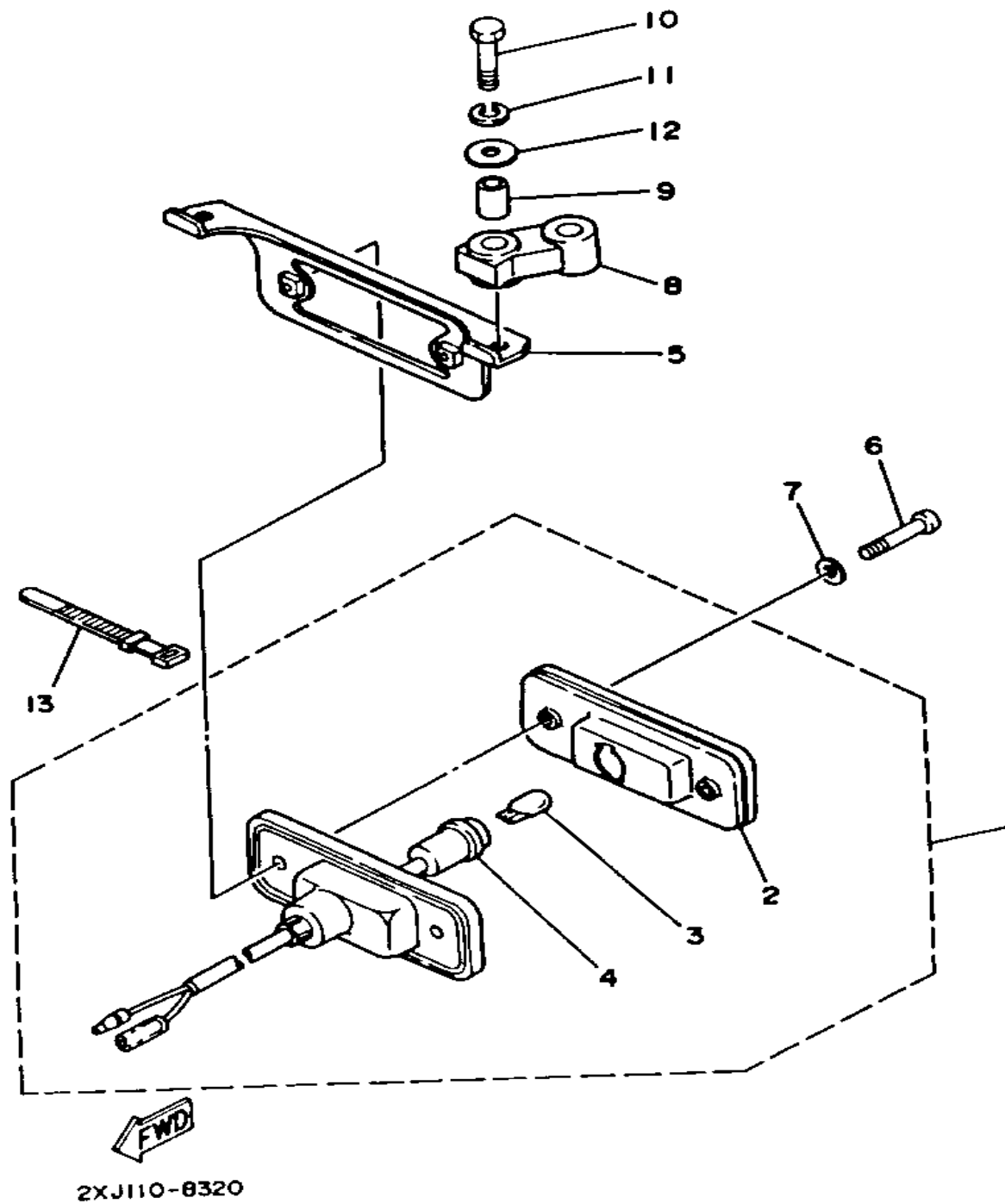
## GUARD

Ref. No.	Part Number	Description	Qty	Remarks
1	3JM-2845N-10-00	BAR, CARRY FRONT .....	1	
2	2HR-28415-00-00	DAMPER 1 .....	2	
3	95811-08016-00	BOLT, FLANGE .....	3	
4	2XJ-2842M-00-00	COVER 1 .....	1	
5	90154-05001-00	SCREW, BINDING .....	2	
6	3JM-2845R-30-00	BAR, CARRY REAR .....	1	
7	95811-08016-00	BOLT, FLANGE .....	3	

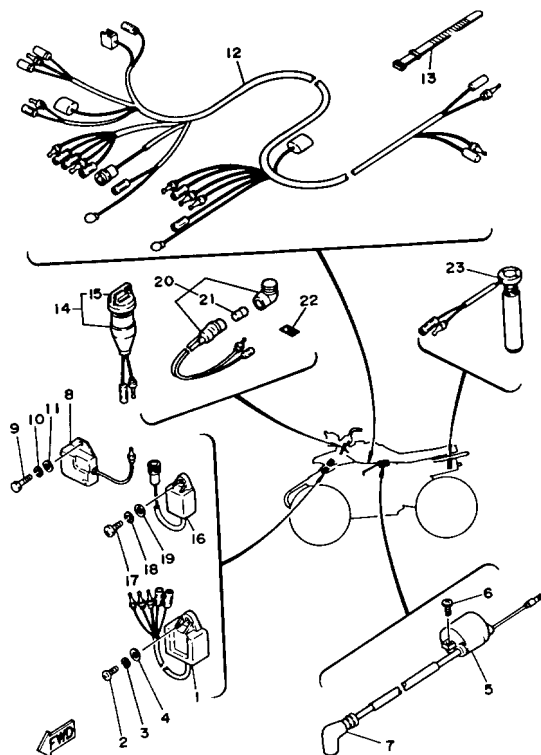




# TAILLIGHT

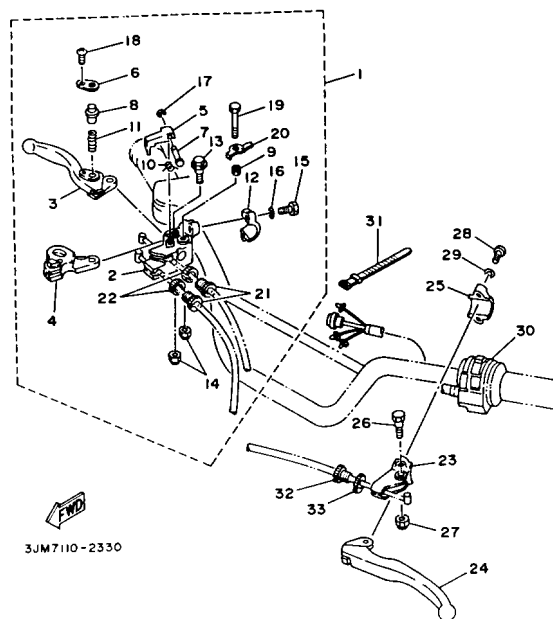


Ref. No.	Part Number	Description	Qty	Remarks
1	38W-84710-00-00	TAILLIGHT UNIT ASSEMBLY ..	1	
2	38W-84721-00-00	. LENS, TAILLIGHT .....	1	
3	3F9-84744-00-XX	. BULB, METER 12V3.8W .....	1	
4	38W-84710-00-00	. TAILLIGHT UNIT ASSEMBLY .	1	
5	1UY-84702-00-00	BRACKET, TAILLIGHT .....	1	
6	98511-04020-00	SCREW, PAN HEAD .....	2	
7	92901-04600-00	WASHER, PLATE .....	2	
8	38W-84736-00-00	DAMPER, TAIL 1 .....	2	
9	90387-06553-00	COLLAR .....	4	
10	97011-06025-00	BOLT (97001-06025) .....	4	
11	92906-06100-00	WASHER, SPRING .....	4	
12	90201-06059-00	WASHER, PLATE .....	4	
13	437-83936-01-00	BAND, SWITCH CORD .....	1	



# ELECTRICAL

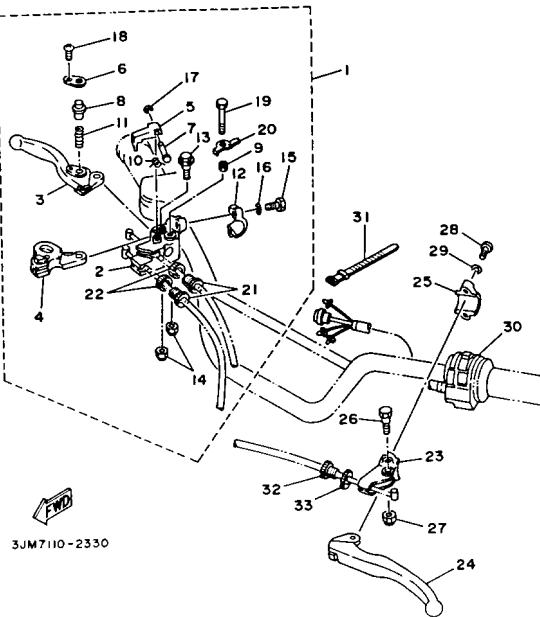
Ref. No.	Part Number	Description	Qty	Remarks
1	3FL-85540-00-00	C.D.I. UNIT ASSEMBLY .....	1	
2	98580-06020-00	SCREW .....	1	
3	92995-06100-00	WASHER, SPRING .....	1	
4	92901-06600-00	WASHER .....	1	
5	5M0-82310-M0-00	IGNITION COIL ASSEMBLY ...	1	
6	98502-06016-00	SCREW, PAN HEAD (98501-06014-00) .....	2	
7	2TV-82370-00-00	PLUG CAP ASSEMBLY .....	1	W/NOISE SUPP.
8	82F-81910-A0-00	VOLTAGE REGULATOR ASSEMBLY .....	1	
9	98580-06020-00	SCREW .....	2	
10	92995-06100-00	WASHER, SPRING .....	2	
11	92901-06600-00	WASHER .....	2	
12	2XJ-82590-00-00	WIRE HARNESS ASSEMBLY ..	1	
13	437-83936-11-00	BAND, SWITCH CORD .....	3	
14	2XJ-82510-01-00	MAIN SWITCH ASSEMBLY ...	1	
15	3HN-82579-00-00	. CAP, KEY .....	1	
16	2GU-85590-M0-00	CONTROL UNIT ASSEMBLY ..	1	
17	98580-06020-00	SCREW .....	1	
18	92995-06100-00	WASHER, SPRING .....	1	
19	92901-06600-00	WASHER .....	1	
20	2XJ-83530-00-00	PILOT LIGHT ASSEMBLY ....	1	
21	2XJ-83516-00-00	. BULB (12V-3.4W) .....	1	
22	4U3-83585-00-00	LABEL .....	1	
23	2XJ-85720-01-00	OIL LEVEL GAUGE ASSEMBLY	1	



# HANDLE SWITCH - LEVER

Ref. No.	Part Number	Description	Qty	Remarks
1	3JM-82920-01-00	LEVER HOLDER ASSEMBLY R (RIGHT) .....	1	
2	3GH-82921-01-00	. HOLDER, LEVER 2 .....	1	
3	3GH-83922-00-00	. LEVER 2 .....	1	
4	3GH-83912-00-00	. LEVER 1 .....	1	
5	3JM-83965-00-00	. LEVER, LOCK .....	1	
6	1UY-83935-00-00	. COVER .....	1	
7	3FA-83967-00-00	. PIN, LOCK 1 .....	1	
8	1UY-83967-00-00	. PIN, LOCK 1 .....	1	
9	1UY-83913-00-00	. COLLAR, LEVER 1 .....	1	
10	3GH-83966-00-00	. SPRING, RETURN .....	1	
11	1UY-83962-00-00	. SPRING .....	1	
12	2XJ-82913-00-00	. HOLDER, LEVER LOWER 1 ..	1	
13	90109-06797-00	. BOLT .....	1	
14	95601-06100-00	. NUT, U .....	2	
15	97026-06022-00	. BOLT .....	2	
16	92906-06100-00	. WASHER, SPRING .....	2	
17	3FA-26466-00-00	. RING, SNAP .....	1	
18	98506-03008-00	. SCREW, PAN HEAD (90157-03122-00) .....	1	
19	95816-06040-00	. BOLT .....	1	
20	3JM-8331L-10-00	. PLATE, STOPPER .....	1	
21	90123-08046-00	. BOLT .....	2	
22	90179-08148-00	. NUT .....	2	
23	38V-82911-00-00	HOLDER, LEVER 1 .....	1	
24	1NV-83912-00-00	LEVER 1 .....	1	
25	38V-82913-00-00	HOLDER, LEVER LOWER 1 ...	1	
26	90109-06799-00	BOLT .....	1	
27	95601-06100-00	NUT, U .....	1	

CONTINUED ON NEXT FRAME ►



# HANDLE SWITCH - LEVER

Ref. No.	Part Number	Description	Qty	Remarks
28	98506-05018-00	SCREW, PAN HEAD .....	2	
29	92906-05100-00	WASHER, SPRING .....	2	
30	2XJ-83975-01-00	SWITCH, HANDLE 2 .....	1	
31	437-83936-01-00	BAND, SWITCH CORD .....	2	
32	90123-08046-00	BOLT .....	1	
33	90179-08148-00	NUT .....	1	

# YFS200D 1992 SERVICE DATA

MODEL / MODEL CODE	YFM200D / JIM
INITIAL ENGINE NUMBER / FRAME NUMBER	3JM-113101 / JY43JMAQJ NA113101
ENGINE:	Air-Cooled, Two-Stroke, Single
Bore / Stroke / Number Cylinders / Displacement	66mm / 57mm / 1 / 195cc
Piston Skirt Clearance New / Max	0.035 - 0.040mm / 0.1mm
Valve Clearance (Cold): Intake / Exhaust	# / #
Oil Type: Above 5°C (40°F)	Yamalube 2" or Equivalent
Oil Type: Below 15°C (60°F)	Yamalube 2" or Equivalent
Capacity: Oil and Filter Change / Oil Change Only	1.3 Lt (1.4 qt) (Autolube Tank) / #
Oil Filter Part Number	#
TRANSMISSION:	
Oil Type / Capacity / Drive Chain Free Play	Yamalube 4" or SAE 10W30SE / 650cc / 30 - 40mm
MIDDLE GEAR CASE: Oil Type / Capacity	# / #
FINAL GEAR CASE: Oil or Grease Type / Capacity	# / #
FUEL TANK: Main / Reserve / Fuel Type	9 Lt (2.4 gal) / 2 Lt (0.5 gal) / Unleaded Premium
COOLING SYSTEM: Coolant Type / Mixing Ratio (Liquid)	# / #
CARBURETOR:	
Manufacturer / Type / ID Number	Mikuni / VM26SS / 2XJ-01
Main Jet / Pilot Jet / Pilot Screw (Turns Out)	#230 / #32.5 / 1-1/2
Needle Jet / Jet Needle / Clip Position	P-6 (#345) / 5J22 / 2
Side Cutaway	2.0
Fuel Height / Fuel Level	21 ± 0.5mm / 1 ± 0.5mm (With Special Tool)
Idle rpm	1500 ± 50
SUSPENSION:	
Front: Toe-In	0 - 10mm (0 - 0.39 in.)
Oil Type / Level / Quantity	# / # / #
Gas or Air Pressure Min - Max / Standard	# / # / #
Rear: Gas or Air Pressure Min - Max / Standard	# / # / #
TIRES: Size / Nominal Pressure: Front	AT21X7-10 / 0.27 - 0.33 kg/cm² (3.8 - 4.7 psi)
Size / Nominal Pressure: Rear	AT21X10-8 / 0.22 - 0.28 kg/cm² (3.1 - 4.0 psi)
CHARGING SYSTEM:	
Battery: Model / Specific Gravity / Charge Rate	# / # / #
Maximum Output	#
Field Coil Color Code / Ω	#
Stator Coil Color Code / Ω	#
Charge Coil Color Code / Ω	#
IGNITION SYSTEM:	Capacitor Discharge
Ignition Timing	16° @ 3000 rpm
Spark Plug Type	NGK B8ES or ND W24ES
Spark Plug Gap / Torque / Cap Ω	0.7-0.8mm (0.28-0.32 in.) / 2.5m·kg (18 ft·lb) / 5KΩ
Ignition Coil Test Gap / Primary Ω / Secondary Ω	6mm / 1.6Ω ± 10% / 6.6KΩ ± 20%
Pulser Coil or Pickup Coil Color Code / Ω	W-R - B / 20Ω ± 20%
Source Coil Color Code / Ω	B-R - B / 240Ω ± 20%

# = Does not apply to this model  
NA = Information not available

\* = Available from YPAD  
@ = For diagnostic use only

PAGE 1 OF 2

LIGHTING SYSTEM	Flywheel Magneto
Headlight / Taillight / Turn Signal	12V45-45W / 12V-3.8W / #
Lighting Coil Color Code / Ω	Y-R - B / 0.2Ω ± 20%
TORQUE VALUES:	
Front Hub Nut	M14: 7.0 m·kg (51 ft·lb)
Steering Knuckle and Ball Joint	M10: 4.8 m·kg (35 ft·lb)
Steering Knuckle and Knuckle Arm	M10: 3.8 m·kg (27 ft·lb)
Steering Knuckle Arm and Tie Rod	M10: 2.5 m·kg (18 ft·lb)
Rear Hub Nut	M14: 12 m·kg (87 ft·lb)
Front Wheel Nut	M10: 4.5 m·kg (33 ft·lb)
Rear Wheel Nut	M10: 4.5 m·kg (33 ft·lb)
Rear Axle Ring Nut	#
Clutch Nut	M12: 8.0 m·kg (58 ft·lb)
Drain Plug	M12: 2.0 m·kg (14 ft·lb)
Drain Plug (Transmission)	M12: 2.0 m·kg (14 ft·lb)
Flywheel Nut	M12: 7.3 m·kg (53 ft·lb)
Cylinder Head	M8: 2.7 m·kg (20 ft·lb)
Engine Mounting: Front and Frame	M10: 4.5 m·kg (33 ft·lb)
Rear and Frame	M8: 3.3 m·kg (24 ft·lb)
Pivot Shaft	M14: 8.5 m·kg (61 ft·lb)
Spark Plug	2.5 m·kg (18 ft·lb)
SERVICE LITERATURE:	
Owner's Manual	LIT-11626-08-10
Owner's Manual (Maine & New Hampshire)	LIT-11626-08-11
Service Manual	LIT-11616-07-20 Same as YFS200U, W. A. B
Assembly Manual	LIT-11666-07-20 Same as YFS200A

# = Does not apply to this model  
NA = Information not available

\* = Available from YPAD  
@ = For diagnostic use only

PAGE 2 OF 2

ROUTE TO:

☒ SERVICE ☒ PARTS ☐ WARRANTY ☐ SALES

## SERVICE DATA

# YFS200D 1992 SERVICE DATA

MODEL / MODEL CODE	YFM200D / JIM
INITIAL ENGINE NUMBER / FRAME NUMBER	3JM-113101 / JY43JMAQJ NA113101
ENGINE:	Air-Cooled, Two-Stroke, Single
Bore / Stroke / Number Cylinders / Displacement	66mm / 57mm / 1 / 195cc
Piston Skirt Clearance New / Max	0.035 - 0.040mm / 0.1mm
Valve Clearance (Cold): Intake / Exhaust	# / #
Oil Type: Above 5°C (40°F)	Yamalube 2" or Equivalent
Oil Type: Below 15°C (60°F)	Yamalube 2" or Equivalent
Capacity: Oil and Filter Change / Oil Change Only	1.3 Lt (1.4 qt) (Autolube Tank) / #
Oil Filter Part Number	#
TRANSMISSION:	
Oil Type / Capacity / Drive Chain Free Play	Yamalube 4" or SAE 10W30SE / 650cc / 30 - 40mm
MIDDLE GEAR CASE: Oil Type / Capacity	# / #
FINAL GEAR CASE: Oil or Grease Type / Capacity	# / #
FUEL TANK: Main / Reserve / Fuel Type	9 Lt (2.4 gal) / 2 Lt (0.5 gal) / Unleaded Premium
COOLING SYSTEM: Coolant Type / Mixing Ratio (Liquid)	# / #
CARBURETOR:	
Manufacturer / Type / ID Number	Mikuni / VM26SS / 2XJ-01
Main Jet / Pilot Jet / Pilot Screw (Turns Out)	#230 / #32.5 / 1-1/2
Needle Jet / Jet Needle / Clip Position	P-6 (#345) / 5J22 / 2
Side Cutaway	2.0
Fuel Height / Fuel Level	21 ± 0.5mm / 1 ± 0.5mm (With Special Tool)
Idle rpm	1500 ± 50
SUSPENSION:	
Front: Toe-In	0 - 10mm (0 - 0.39 in.)
Oil Type / Level / Quantity	# / # / #
Gas or Air Pressure Min - Max / Standard	# / # / #
Rear: Gas or Air Pressure Min - Max / Standard	# / # / #
TIRES: Size / Nominal Pressure: Front	AT21X7-10 / 0.27 - 0.33 kg/cm² (3.8 - 4.7 psi)
Size / Nominal Pressure: Rear	AT21X10-8 / 0.22 - 0.28 kg/cm² (3.1 - 4.0 psi)
CHARGING SYSTEM:	
Battery: Model / Specific Gravity / Charge Rate	# / # / #
Maximum Output	#
Field Coil Color Code / Ω	#
Stator Coil Color Code / Ω	#
Charge Coil Color Code / Ω	#
IGNITION SYSTEM:	Capacitor Discharge
Ignition Timing	16° @ 3000 rpm
Spark Plug Type	NGK B8ES or ND W24ES
Spark Plug Gap / Torque / Cap Ω	0.7-0.8mm (0.28-0.32 in.) / 2.5m·kg (18 ft·lb) / 5KΩ
Ignition Coil Test Gap / Primary Ω / Secondary Ω	6mm / 1.6Ω ± 10% / 6.6KΩ ± 20%
Pulser Coil or Pickup Coil Color Code / Ω	W-R - B / 20Ω ± 20%
Source Coil Color Code / Ω	B-R - B / 240Ω ± 20%

# = Does not apply to this model  
NA = Information not available

\* = Available from YPAD  
@ = For diagnostic use only

PAGE 1 OF 2

PAGE 2 OF 2

ROUTE TO:

☒ SERVICE ☒ PARTS ☐ WARRANTY ☐ SALES

LIGHTING SYSTEM	Flywheel Magneto
Headlight / Taillight / Turn Signal	12V45-45W / 12V-3.8W / #
Lighting Coil Color Code / Ω	Y-R - B / 0.2Ω ± 20%
TORQUE VALUES:	
Front Hub Nut	M14: 7.0 m·kg (51 ft·lb)
Steering Knuckle and Ball Joint	M10: 4.8 m·kg (35 ft·lb)
Steering Knuckle and Knuckle Arm	M10: 3.8 m·kg (27 ft·lb)
Steering Knuckle Arm and Tie Rod	M10: 2.5 m·kg (18 ft·lb)
Rear Hub Nut	M14: 12 m·kg (87 ft·lb)
Front Wheel Nut	M10: 4.5 m·kg (33 ft·lb)
Rear Wheel Nut	M10: 4.5 m·kg (33 ft·lb)
Rear Axle Ring Nut	#
Clutch Nut	M12: 8.0 m·kg (58 ft·lb)
Drain Plug	M12: 2.0 m·kg (14 ft·lb)
Drain Plug (Transmission)	M12: 2.0 m·kg (14 ft·lb)
Flywheel Nut	M12: 7.3 m·kg (53 ft·lb)
Cylinder Head	M8: 2.7 m·kg (20 ft·lb)
Engine Mounting: Front and Frame	M10: 4.5 m·kg (33 ft·lb)
Rear and Frame	M8: 3.3 m·kg (24 ft·lb)
Pivot Shaft	M14: 8.5 m·kg (61 ft·lb)
Spark Plug	2.5 m·kg (18 ft·lb)
SERVICE LITERATURE:	
Owner's Manual	LIT-11626-08-10
Owner's Manual (Maine & New Hampshire)	LIT-11626-08-11
Service Manual	LIT-11616-07-20 Same as YFS200U, W. A. B
Assembly Manual	LIT-11666-07-20 Same as YFS200A

# = Does not apply to this model  
NA = Information not available

\* = Available from YPAD  
@ = For diagnostic use only

## TECHNICAL BULLETIN

MOJO-4 DATE: 7/22/92 BY: MF92-003

### YFS200D/E CLUTCH COVER GASKET REPLACEMENT

#### INTRODUCTION

**PROBLEM:** The clutch cover gasket can dislodge, causing oil seepage in the areas shown in the illustration.

**CAUSE:** The original gasket is not resistant enough to vibration and heat in the indicated problem areas.

**REMEDY:** Replace the gasket with a new one according to the instructions in this bulletin, whether or not the gasket has started leaking.



#### DEALER ACTION SUMMARY

**CHECK:** Check unit according to the identification procedure under "Affected Units." If there is a punch mark as shown, the unit does not need modification.

**MODIFY:** Unsold Units — Replace the gasket as part of pre-delivery service on all units in the affected range.

Sold Units — Modify all sold units in the affected range without a punch mark, whether or not the gasket has started leaking.

PARTS REQUIRED: Yes

WARRANTY: Service-Per-Bulletin

#### AFFECTED UNITS

YFS200D 3JM-113101-117774  
YFS200E 3JM-142101-142623

#### NOTE:

- Units that are not in the affected range already have a new-style gasket installed by the factory and require no modification. Be aware that the new gasket used in future production may not look the same as either of the gaskets described in this bulletin.
- Check units in the affected range before modifying them. See the following "Identification Procedure."

#### Identification Procedure

Before modifying an affected unit, check for a punch mark on the swingarm pivot bolt head which shows that the unit has already been modified.

After you have changed the gasket, mark each unit by making a punch mark on the swingarm pivot bolt head as shown in the illustration.



#### SERVICE PROCEDURE

Remove the clutch cover and replace the clutch cover gasket. Use the instructions in the service manual.

Then put a punch mark on the swingarm pivot bolt head as described in "Identification Procedure" in this bulletin.

#### CAUTION:

When refilling the transmission, put in the specified 650cc of Yamalube 10W30 or equivalent oil. The oil level window will fill up before you put in the correct amount of oil. Do not use the window to judge oil level during initial fill-up. As the engine is run, however, the clutch will transfer the oil to the gearcase. Too little oil will cause transmission damage. After adding oil, run the engine for at least 1 minute, then check oil level in the window. Add more oil if necessary.

#### PARTS INFORMATION

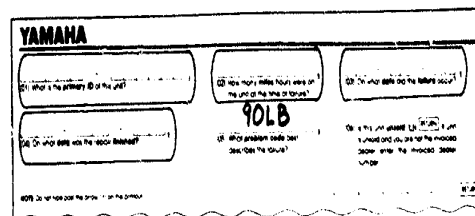
Part Number	Description	Remarks	Dealer Cost
10V-15451-01-00	Crankcase Cover Gasket		
WTY-11000-39-XX	Warranty Oil	For warranty purposes only - do not order.	

#### WARRANTY INFORMATION

This modification is authorized for all affected units, regardless of ownership or warranty status.

The labor allowance for this procedure is 0.5 hours. To receive credit for the labor, the gasket, and an allowance for the quart of oil used in this modification, file a service-per-bulletin Warranty Request using Problem Code 90LB.

Read the Warranty Handbook, Chapter 11, Section I, for more information about Service-Per-Bulletin Warranty Requests. As with all warranty repairs, tag and hold the original gasket for 90 days from the date you submit the warranty request.



PAGE 2 OF 2

ROUTE TO:

☒ SERVICE ☒ PARTS ☒ WARRANTY ☒ SALES

PAGE 1 OF 2

## TECHNICAL BULLETIN

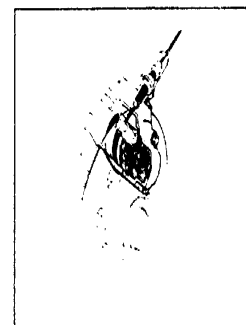
MOJO-4 DATE: 8/19/92 BY: MF92-004

### YFS200 REAR BRAKE CALIPER SERVICE AND ADJUSTMENT

#### INTRODUCTION

The YFS200 has a self-adjusting mechanical disc rear brake system. When doing pre-delivery service, replacing brake pads, or servicing the brake caliper, proper procedures must be followed to maintain accurate operation of the self-adjusting mechanism (adjuster unit).

This bulletin contains information to help the dealer service the rear brake caliper.



#### AFFECTED UNITS

YFS200 All model years

#### SERVICE PROCEDURES

##### Inspection and Cleaning

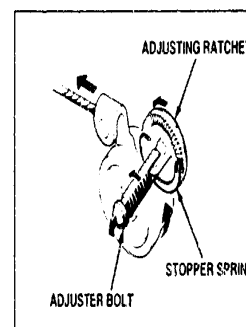
Refer to the service manual for caliper removal and disassembly instructions.

Note the following:

- Clean the caliper body thoroughly. Bead-blast the body if it is corroded.
- Inspect the adjuster unit for damage. Be sure the tabs catch the ratchet wheel properly. Also, make sure the adjusting screw and ratchet wheel turn freely. Clean all the parts of the adjuster with parts cleaning solvent and apply a light coating of grease to the thrust bearing, thrust plate, and balls. Replace the adjuster unit mechanism if it is corroded or otherwise damaged.

**NOTE:** The adjuster unit is available separately. See the Parts Information section for the part number.

- Inspect the brake pads for wear or damage. Replace them if necessary.
- Inspect the brake cable for damage or excessive corrosion and replace if necessary.



#### Service Procedures (Cont'd.)

##### Reassembly

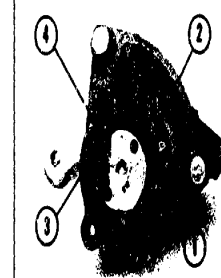
For proper brake self-adjuster operation, always set the adjuster unit and adjust the cables when reassembling the caliper or servicing the brake system.

- Install the brake cable onto the caliper body. Turn the brake cable adjuster on the caliper all the way in.
- Install the inner brake pad then mount the caliper body onto the machine. Make sure to torque properly. Refer to the service manual for torque specifications.
- Apply a light coating of grease onto the O-ring area of the outer brake pad and install it into the caliper body.

**NOTE:** Do not allow any grease to contact the brake pad friction material.

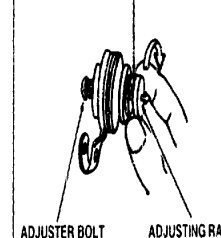
- Referring to Illustration A, install the guide ring (1) by aligning the guide projection to the slot on the caliper body (2). Rotate the outer brake pad to align the guide pin hole (3) to the center of the guide ring slot (4).

#### ILLUSTRATION A



#### ILLUSTRATION B

##### STOPPER SPRING



- Refer to Illustration B and follow these steps to prepare the adjuster unit for installation:
  - Pull the ratchet wheel (1) outward about 5mm. Make sure the ratchet does not contact the stopper spring (2).
  - Turn the adjusting screw out by turning the ratchet wheel clockwise until it stops.
  - Push the ratchet wheel back in place, making sure it contacts the stopper spring.
- Attach the brake cable to the adjuster unit lever. Install the adjuster unit into the caliper body, making sure the adjuster unit guide pin fits into the guide pin hole on the back of the outer brake pad.
- Install the caliper cover, using a new gasket.

PAGE 1 OF 3

PAGE 2 OF 3

# TECHNICAL BULLETIN

MOYO-4

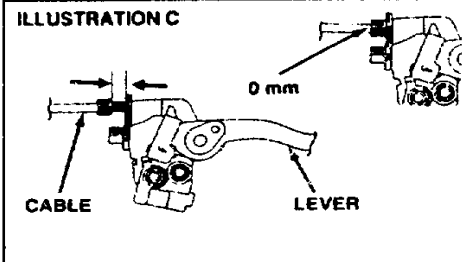
DATE 8/19/92

BUL MF92-004

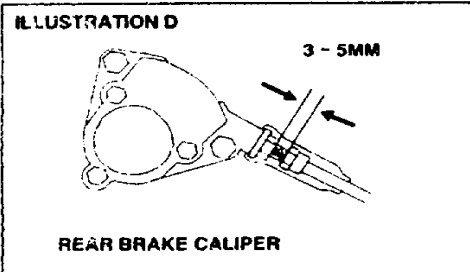
## Service Procedures (Cont'd.)

### Adjustment

8. Turn the parking brake cable adjuster on the lever all the way in. See Illustration C.



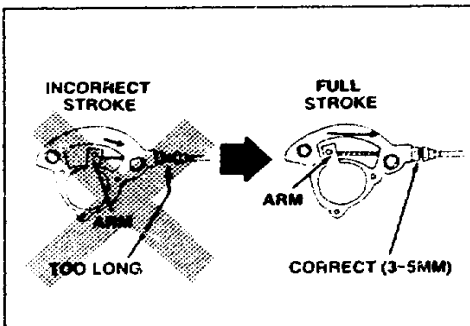
9. Set the rear brake cable adjuster on the caliper to a clearance of 3 ~ 5mm as shown Illustration D.



If the clearance is more than 5mm, the stroke of the caliper auto-adjust arm will be reduced, causing the auto-adjust system to work improperly. The auto-adjust mechanism will only be effective when the arm moves through its full stroke.

10. To adjust the self-adjustment, apply the rear brake by pressing the rear brake pedal repeatedly until the pedal strokes are consistent. (This may require many strokes as the adjuster unit is designed to take up the slack in small increments).

11. Check the brake to make sure it functions properly.



### PARTS INFORMATION

The adjuster unit is available separately, so the caliper assembly need not be replaced if the adjuster unit fails.

Part Number	Description	Dealer Cost	Retail Price
2XJ-25726-01-00	Brake Lever Set (Adjuster Unit)	\$28.25	\$51.40

### WARRANTY INFORMATION

This bulletin is for information only. No special warranty applies.

ROUTE TO: ☒ SERVICE ☒ PARTS ☐ WARRANTY ☐ SALES **PAGE 3 OF 3**